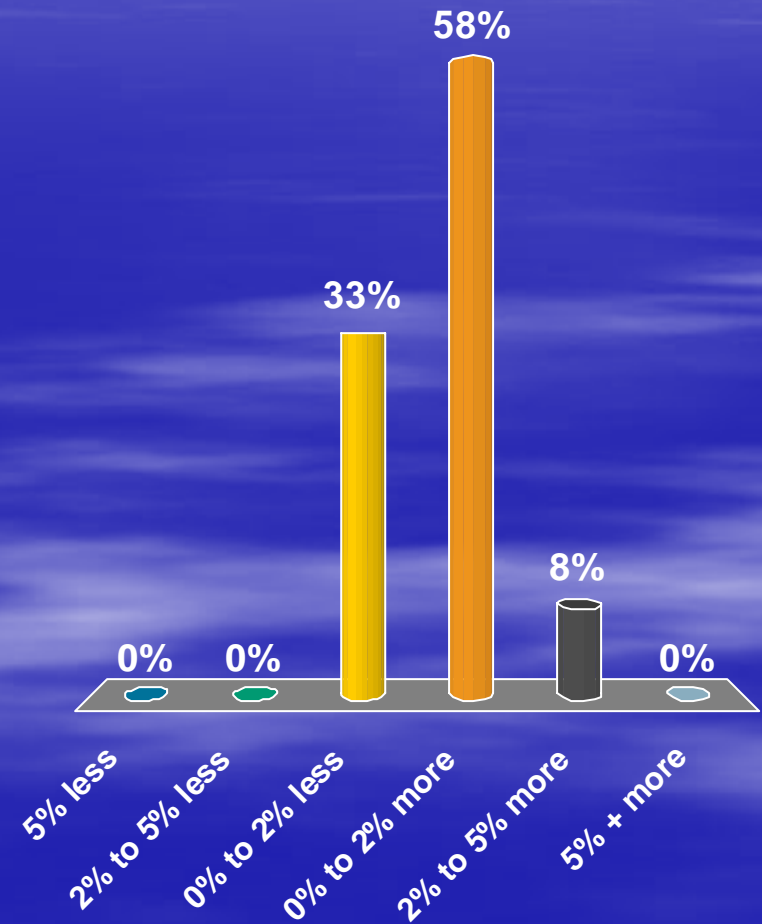


# **National Coal Transportation Association Eastern L & P**

November 1, 2007  
Charleston, West Virginia

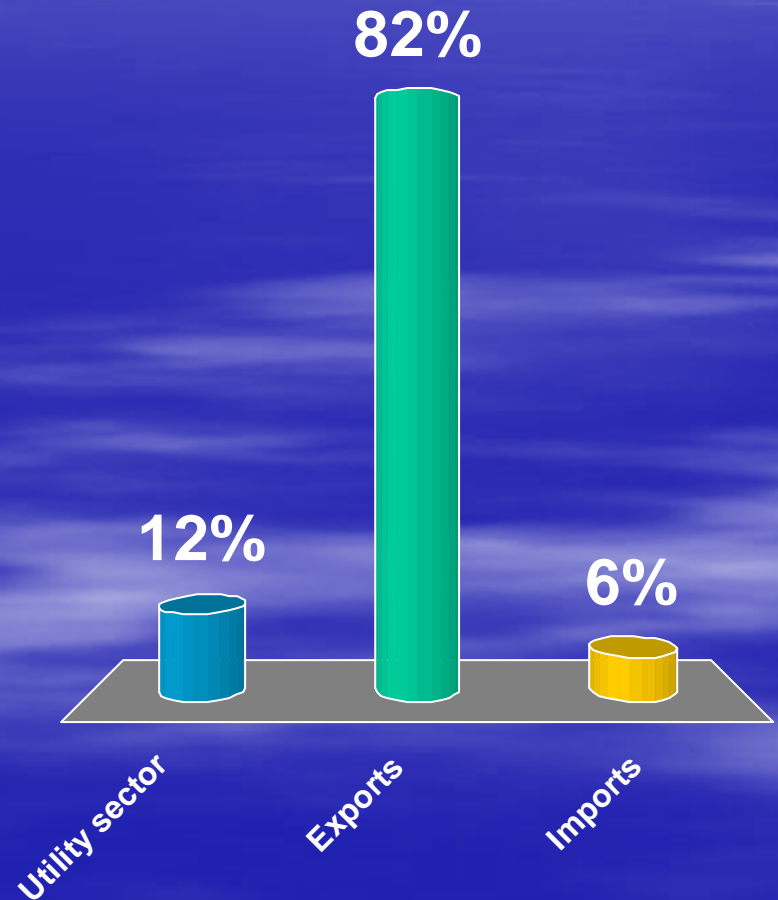
# Compared to 2007 we expect our consumption/production in 2008 to be:

1. 5% less
2. 2% to 5% less
3. 0% to 2% less
4. 0% to 2% more
5. 2% to 5% more
6. 5% + more



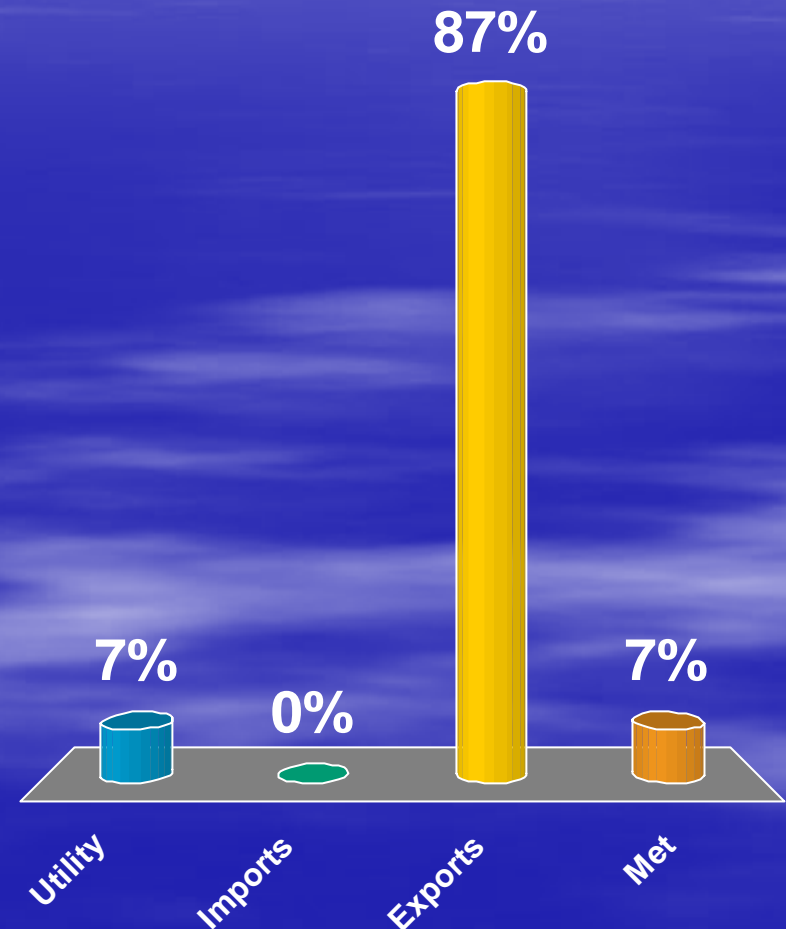
# In 2008 the greatest year over year coal volume variance will be seen in the:

1. Utility sector
2. Exports
3. Imports



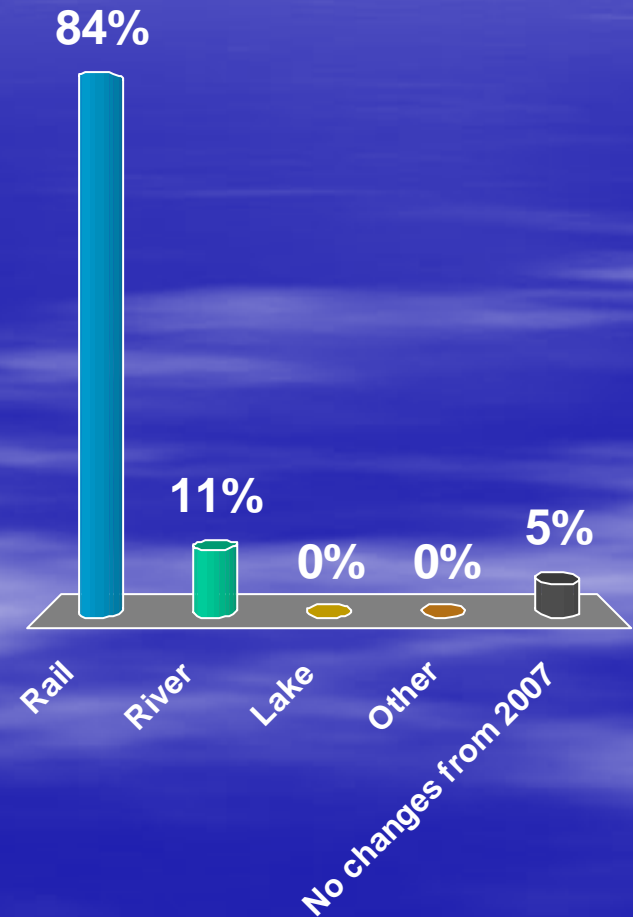
In 2008 the greatest year over year coal percentage variance will be seen in the:

1. Utility
2. Imports
3. Exports
4. Met



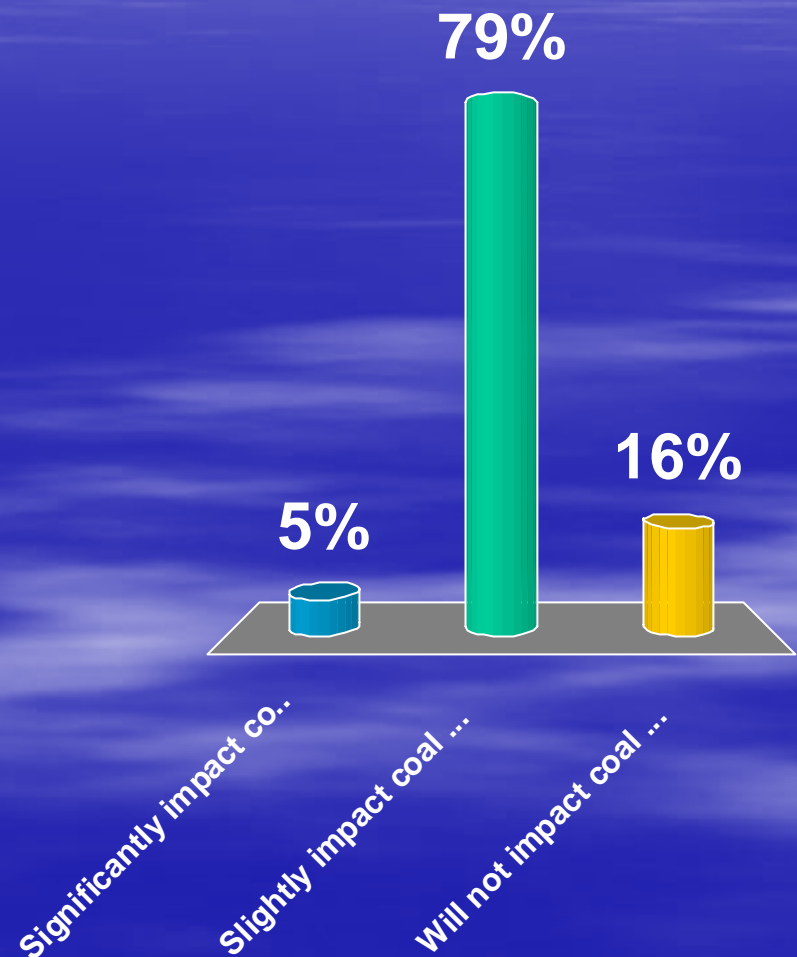
# The greatest year over year coal volume variance will occur in which coal transportation sector?

1. Rail
2. River
3. Lake
4. Other
5. No changes from 2007



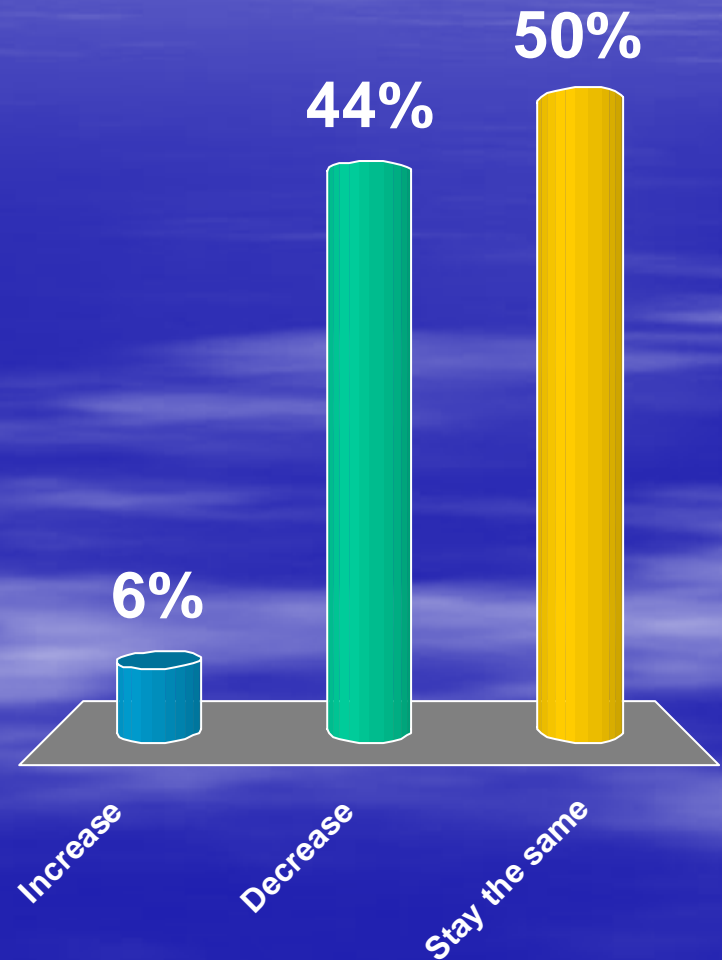
# In 2008 scrubber installation and activation will:

1. Significantly impact coal source switching
2. Slightly impact coal source switching
3. Will not impact coal source switching



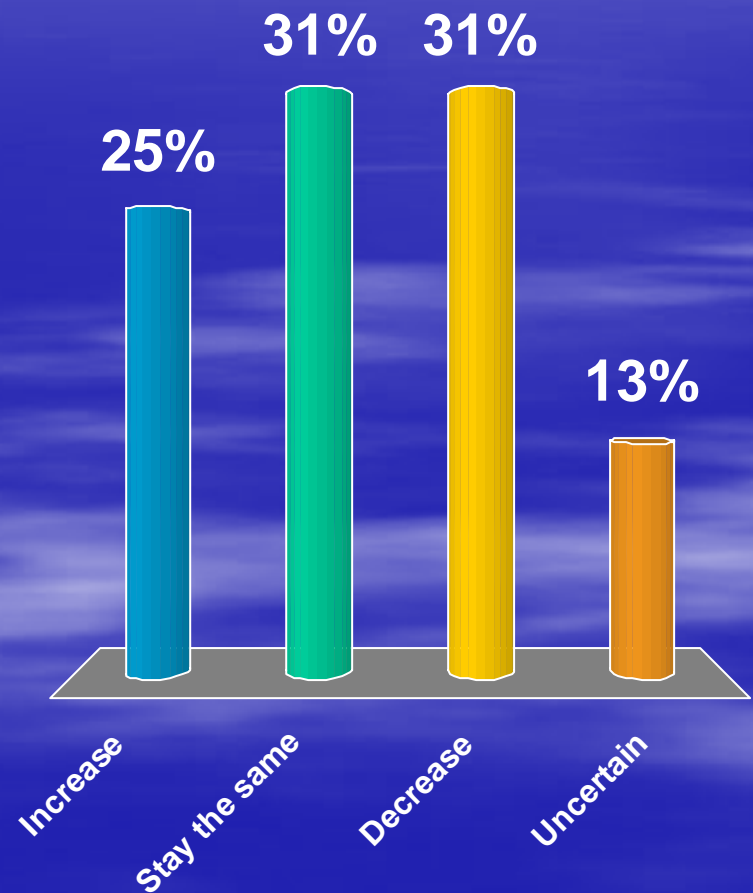
# In 2008 the number of coal producers will:

1. Increase
2. Decrease
3. Stay the same



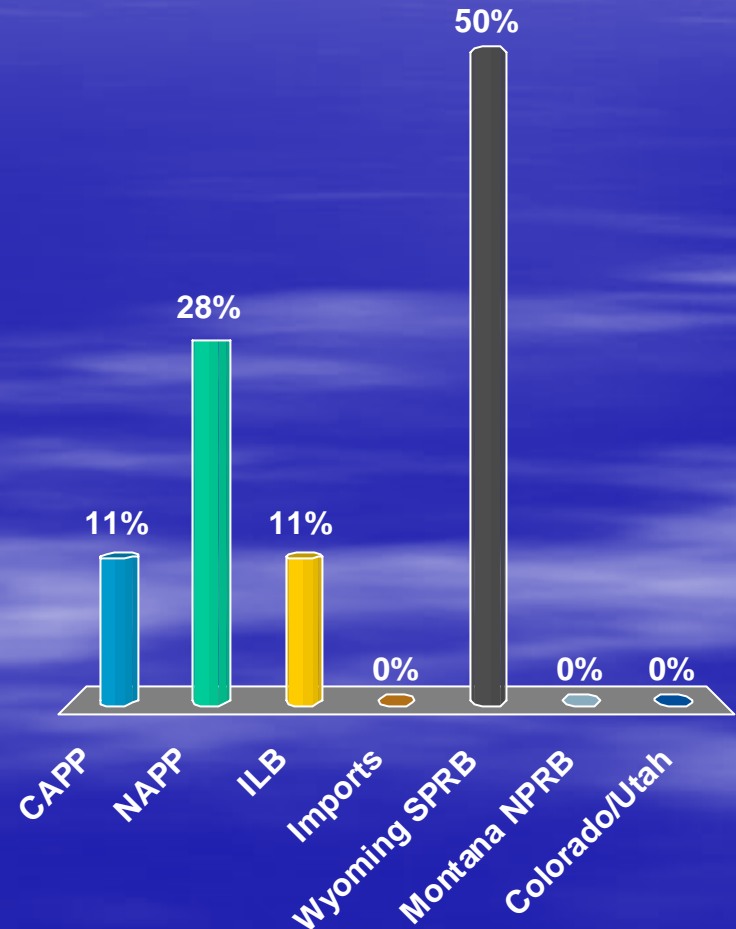
# Inn 2008 the number of Eastern mines will:

1. Increase
2. Stay the same
3. Decrease
4. Uncertain



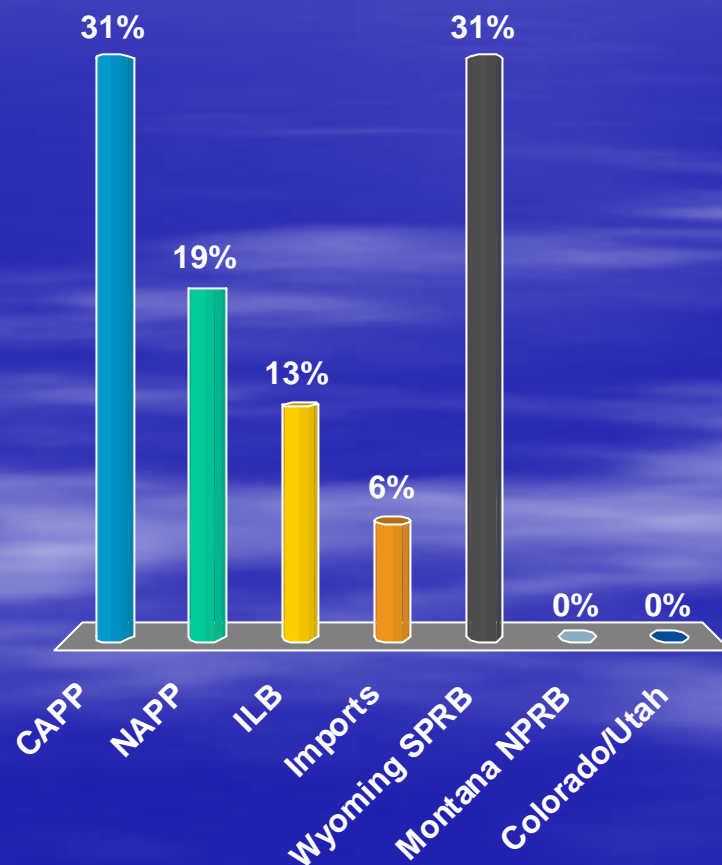
# In 2008 the greatest expected volume change in tons will be seen in:

1. CAPP
2. NAPP
3. ILB
4. Imports
5. Wyoming SPRB
6. Montana NPRB
7. Colorado/Utah



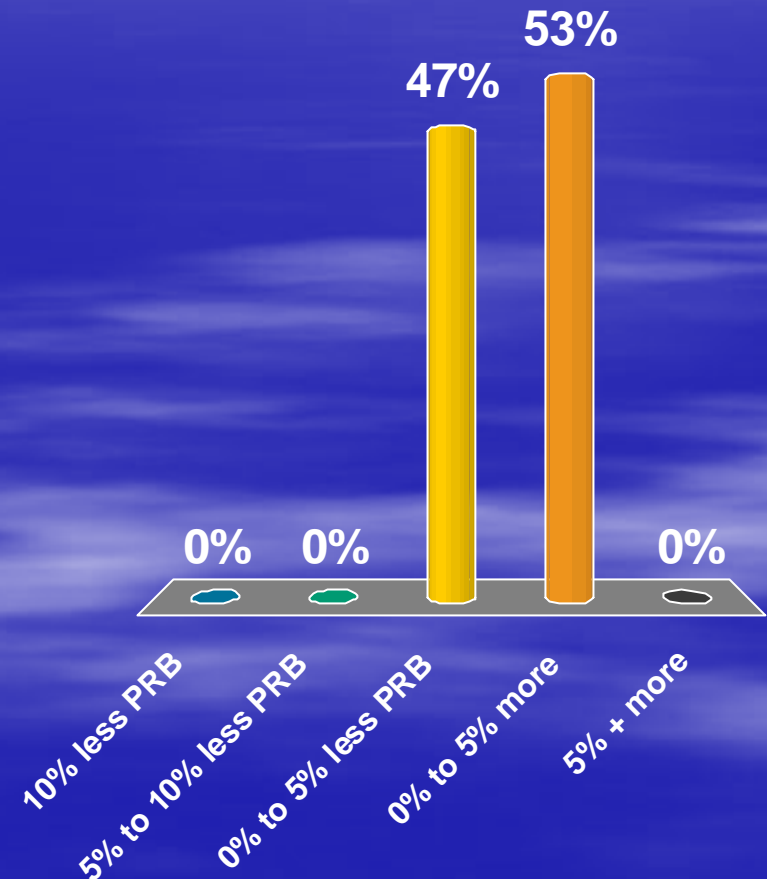
# In 2008 the greatest expected volume percentage change in tons will be seen in:

1. CAPP
2. NAPP
3. ILB
4. Imports
5. Wyoming SPRB
6. Montana NPRB
7. Colorado/Utah



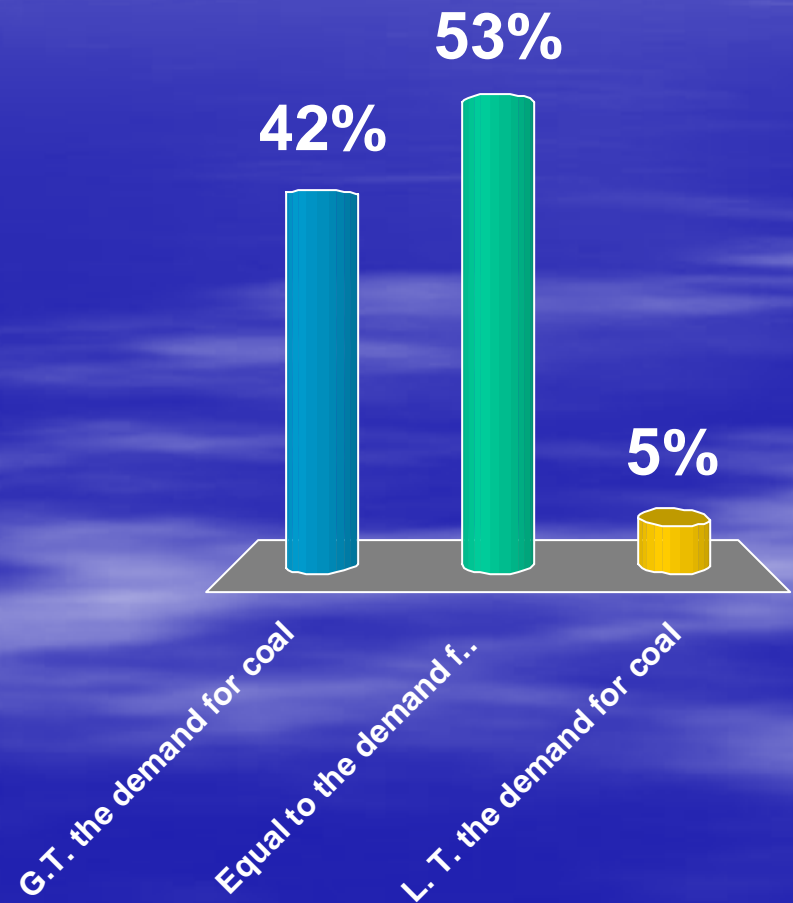
# In 2008, power companies east of the Mississippi will burn:

1. 10% less PRB
2. 5% to 10% less PRB
3. 0% to 5% less PRB
4. 0% to 5% more
5. 5% + more



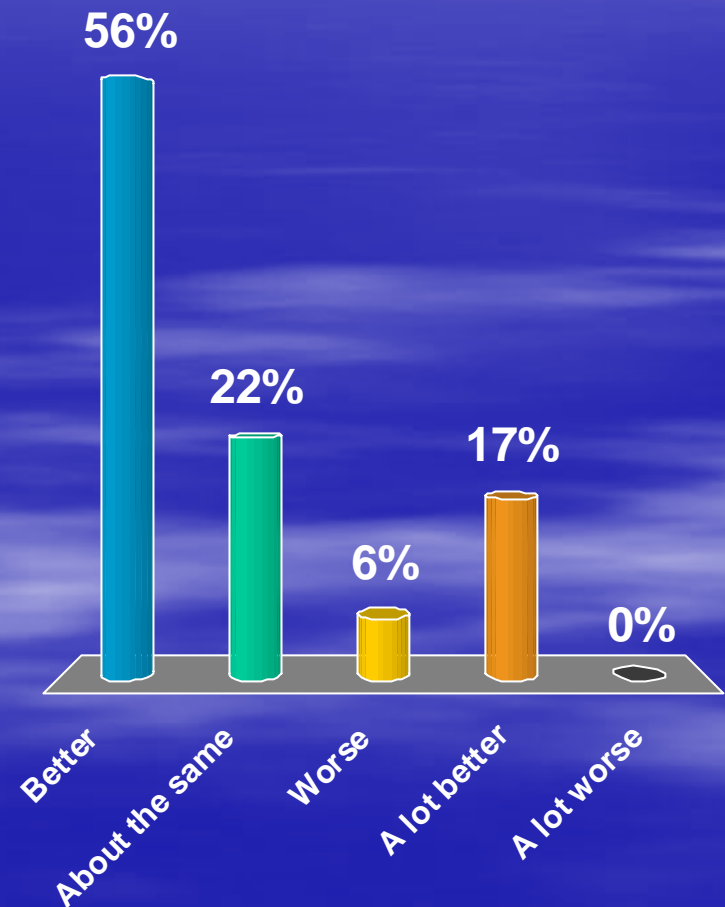
# Do you think that railroad capacity is:

1. G.T. the demand for coal
2. Equal to the demand for coal
3. L. T. the demand for coal



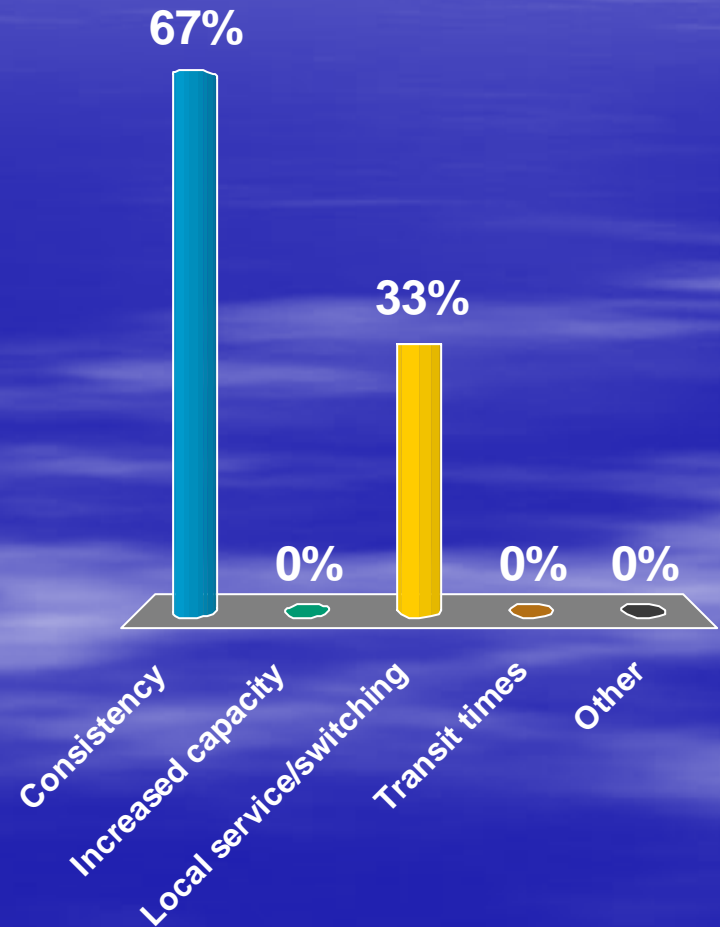
# In comparison to 2008 railroad service in 2007 was:

1. Better
2. About the same
3. Worse
4. A lot better
5. A lot worse



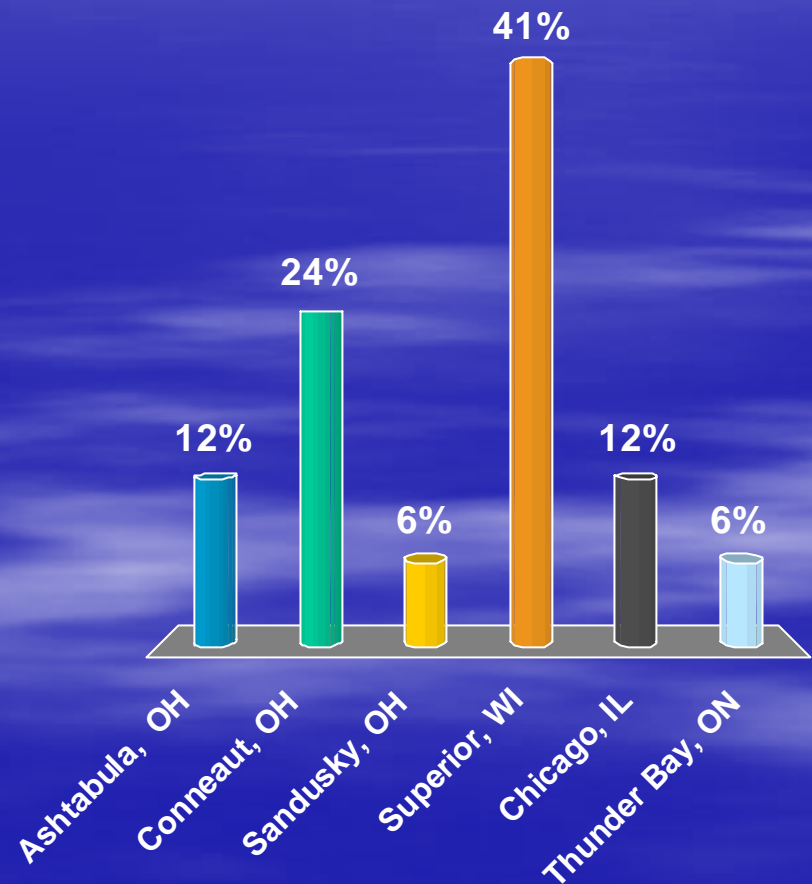
# The single service focused thing that railroads could improve on is:

1. Consistency
2. Increased capacity
3. Local service/switching
4. Transit times
5. Other



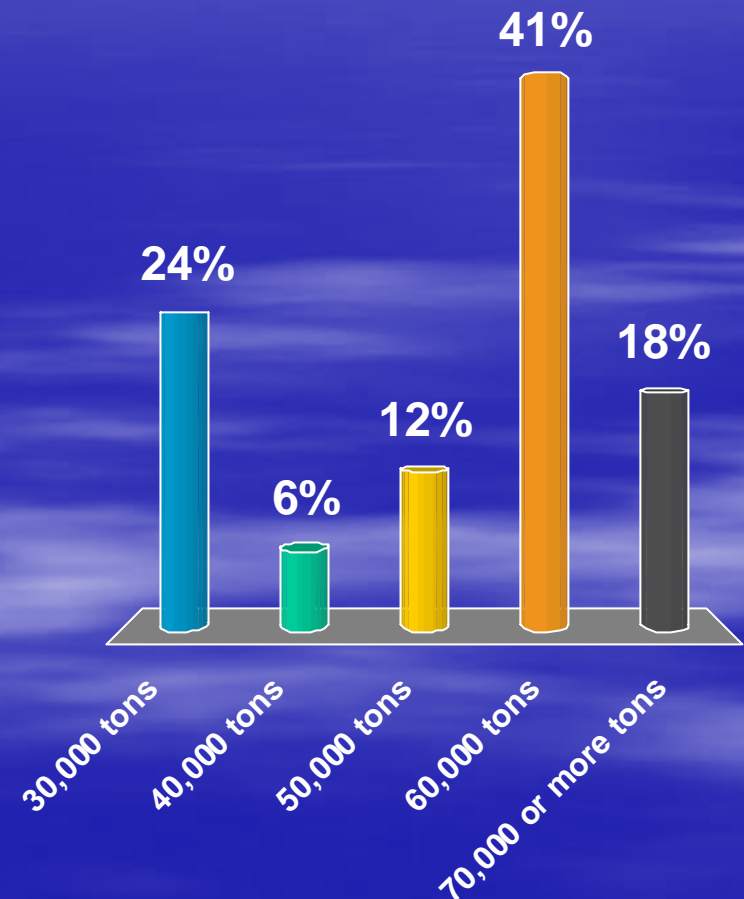
# The largest coal terminal on the Great Lakes is located in:

1. Ashtabula, OH
2. Conneaut, OH
3. Sandusky, OH
- ✓ 4. Superior, WI
5. Chicago, IL
6. Thunder Bay, ON



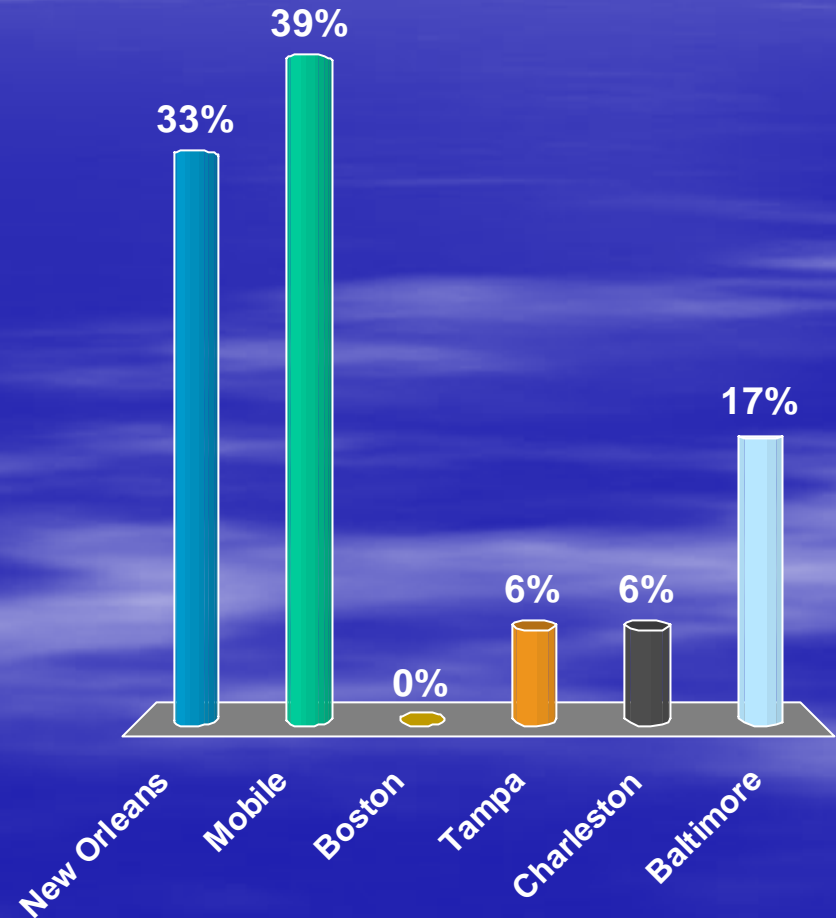
# A 1000 foot lake freighter can carry how much coal?

1. 30,000 tons
2. 40,000 tons
3. 50,000 tons
- ✓ 4. 60,000 tons
5. 70,000 or more tons



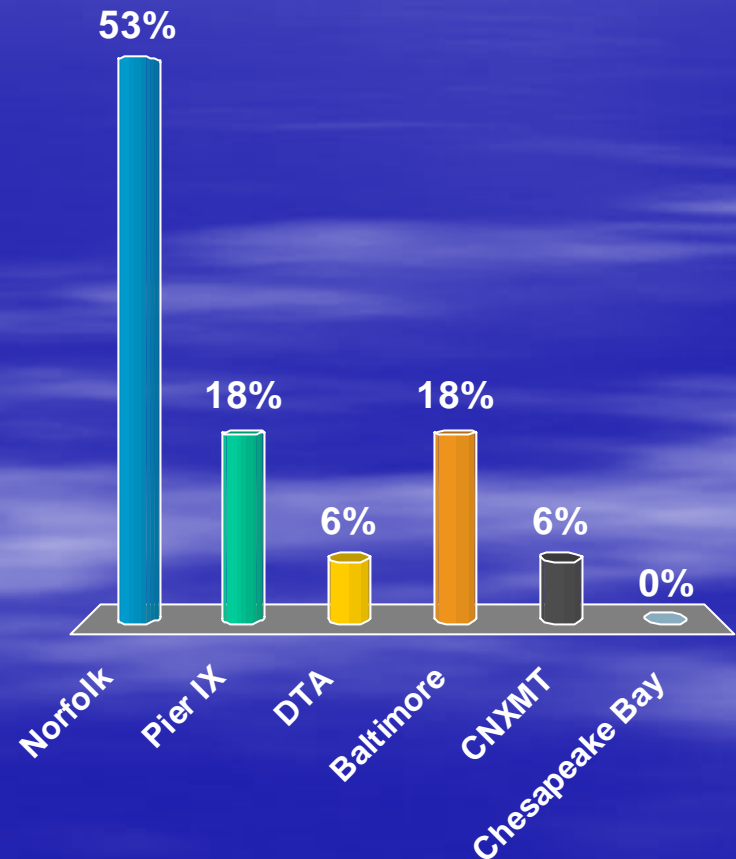
# The largest coal import terminal is:

1. New Orleans
- ✓ 2. Mobile
3. Boston
4. Tampa
5. Charleston
6. Baltimore



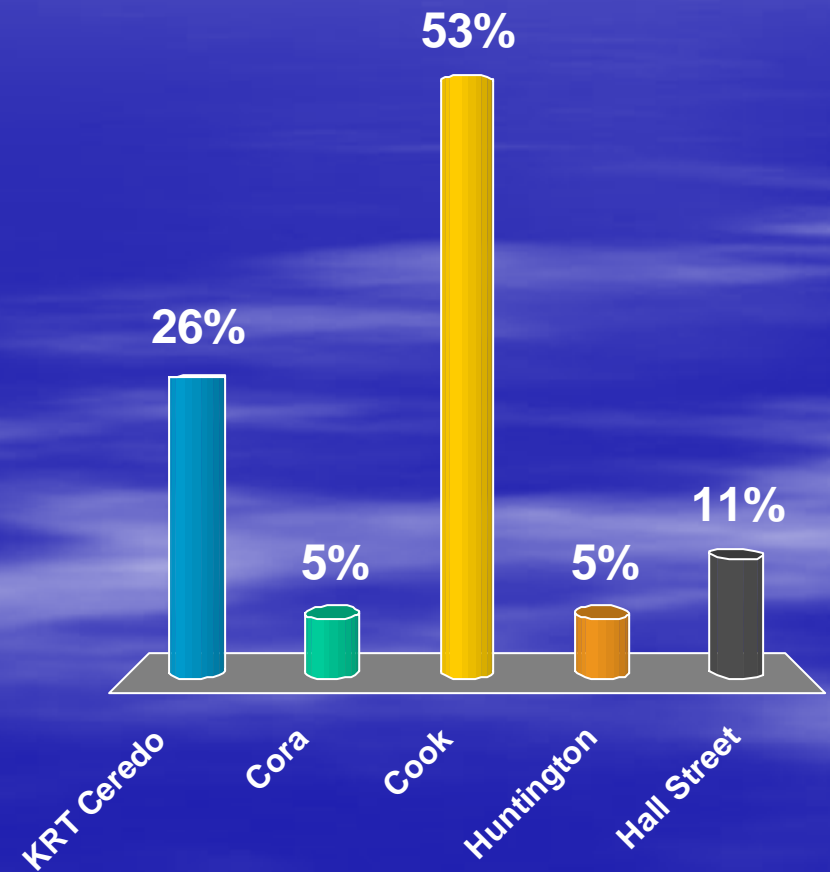
# The largest coal export terminal is:

- ✓ 1. Norfolk
2. Pier IX
3. DTA
4. Baltimore
5. CNXMT
6. Chesapeake Bay



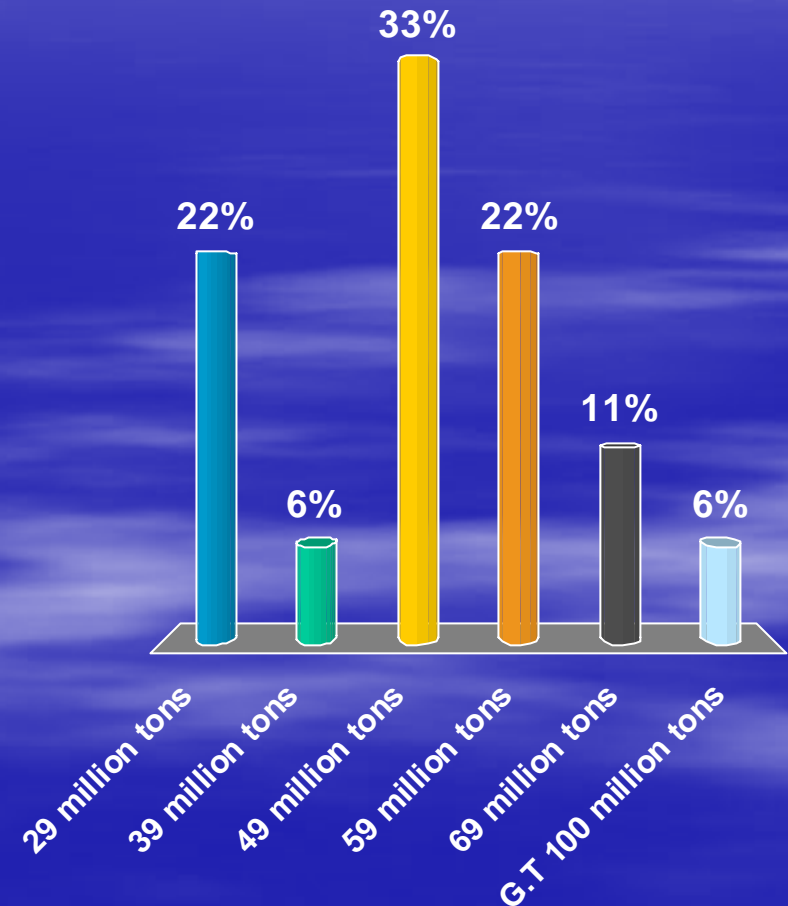
# The largest river coal dock is:

1. KRT Ceredo
2. Cora
3. Cook
4. Huntington
5. Hall Street



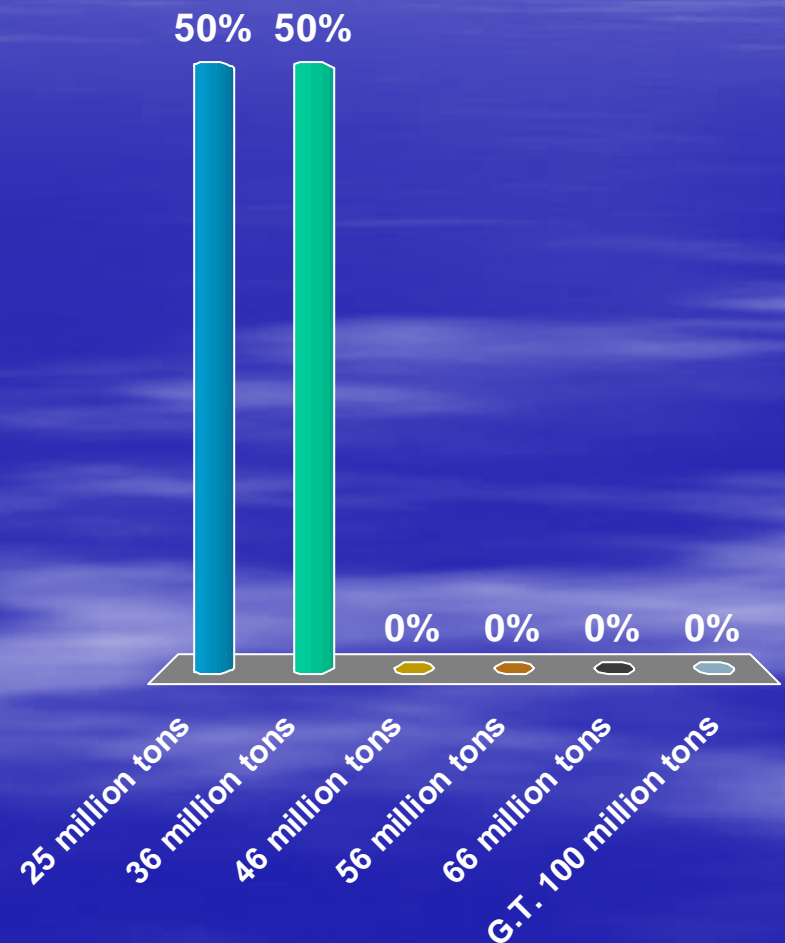
# Approximately how much coal was exported from the US in 2006

1. 29 million tons
2. 39 million tons
- ✓ 3. 49 million tons
4. 59 million tons
5. 69 million tons
6. G.T 100 million tons



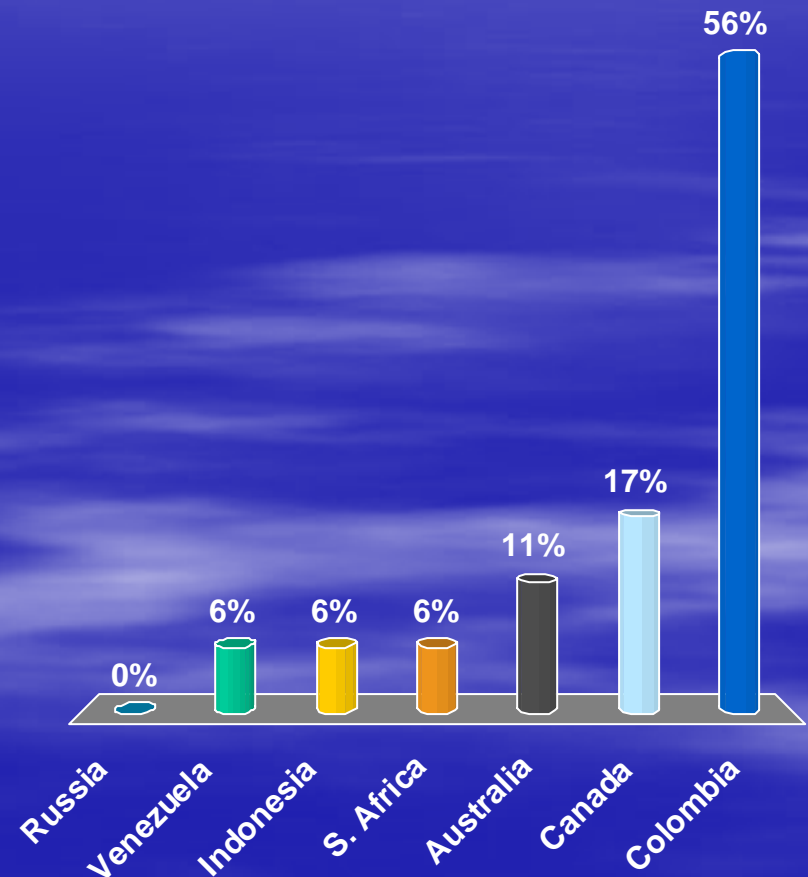
# Approximately how much coal was imported to the US in 2006

1. 25 million tons
- ✓ 2. 36 million tons
3. 46 million tons
4. 56 million tons
5. 66 million tons
6. G.T. 100 million tons



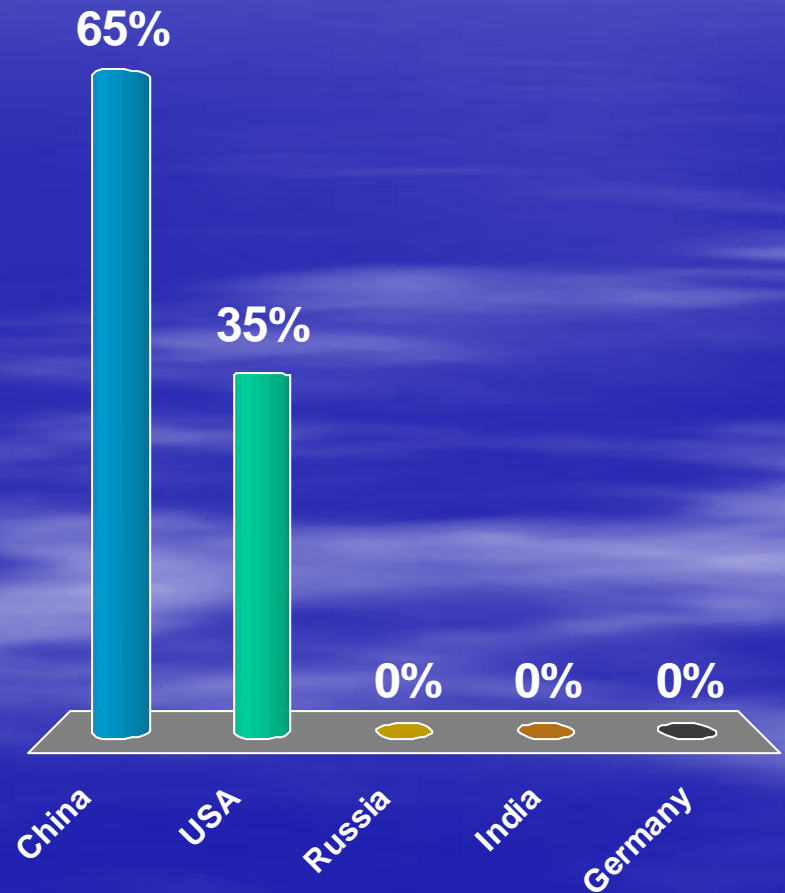
# What country has exported the most coal to the USA in the first half of 2007?

1. Russia
2. Venezuela
3. Indonesia
4. S. Africa
5. Australia
6. Canada
- ✓ 7. Colombia



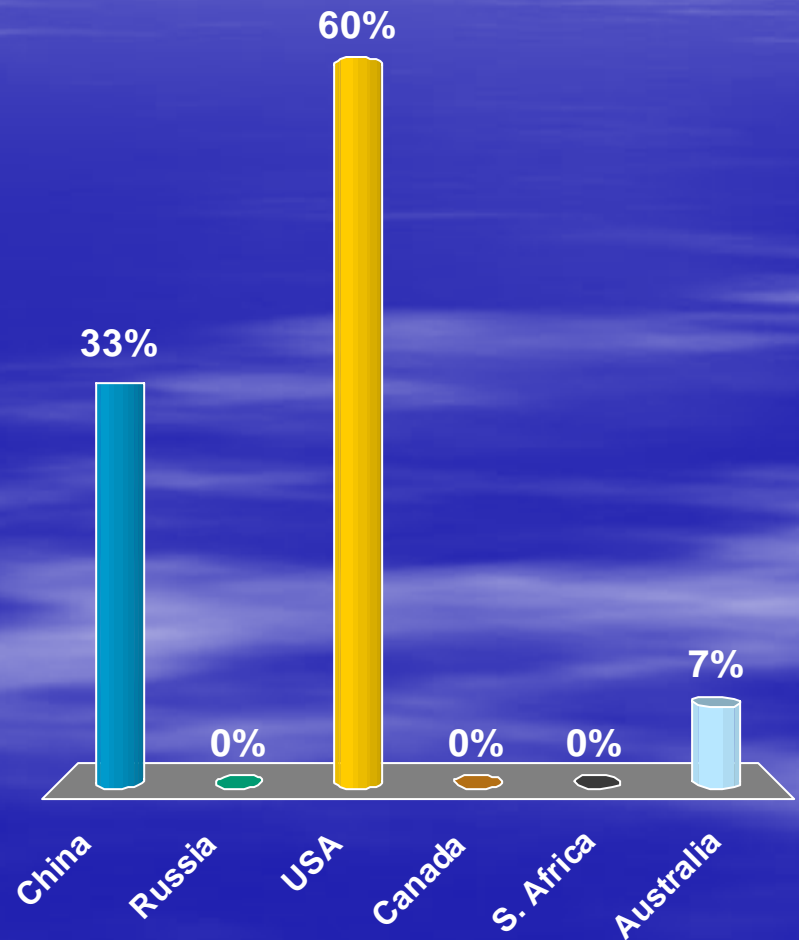
# What country consumes the most coal?

- ✓ 1. China
- 2. USA
- 3. Russia
- 4. India
- 5. Germany



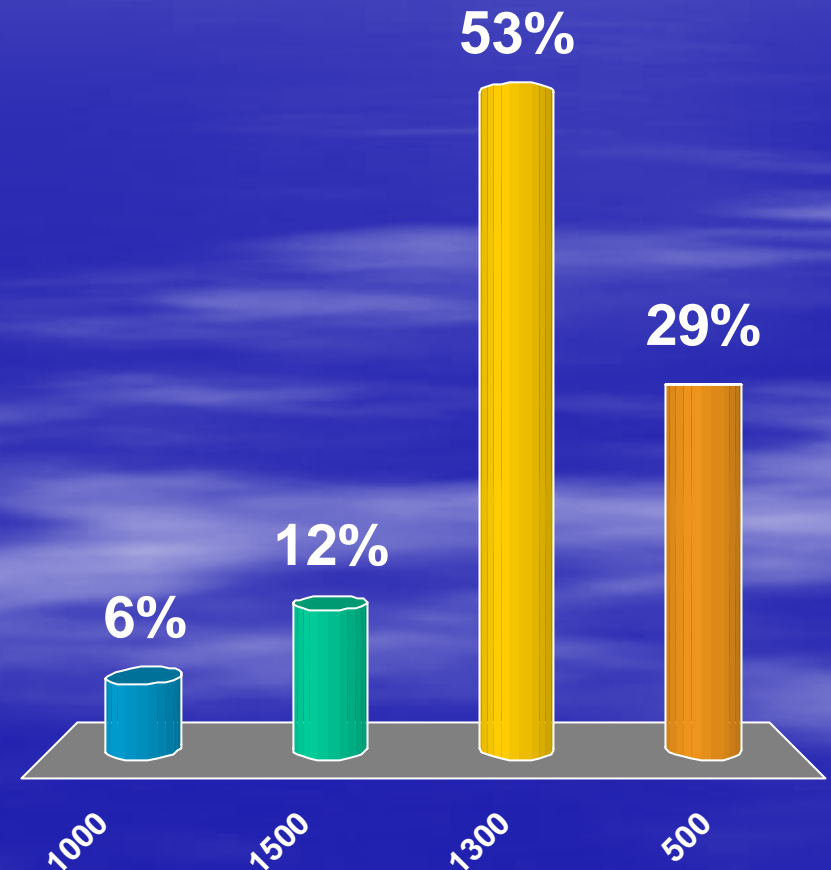
# What country produces the most coal?

- ✓ 1. China
- 2. Russia
- 3. USA
- 4. Canada
- 5. S. Africa
- 6. Australia



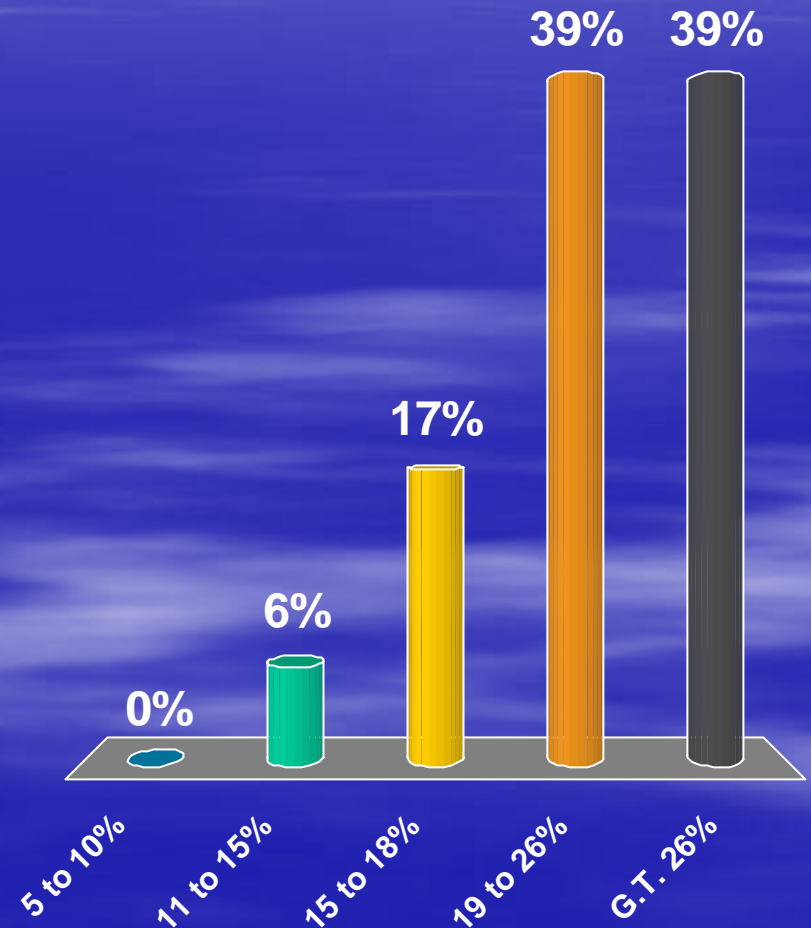
# How many coal fired power plants were there in the USA at the end of 2006

1. 1,000
2. 1,500
3. 1,300
- ✓ 4. 500



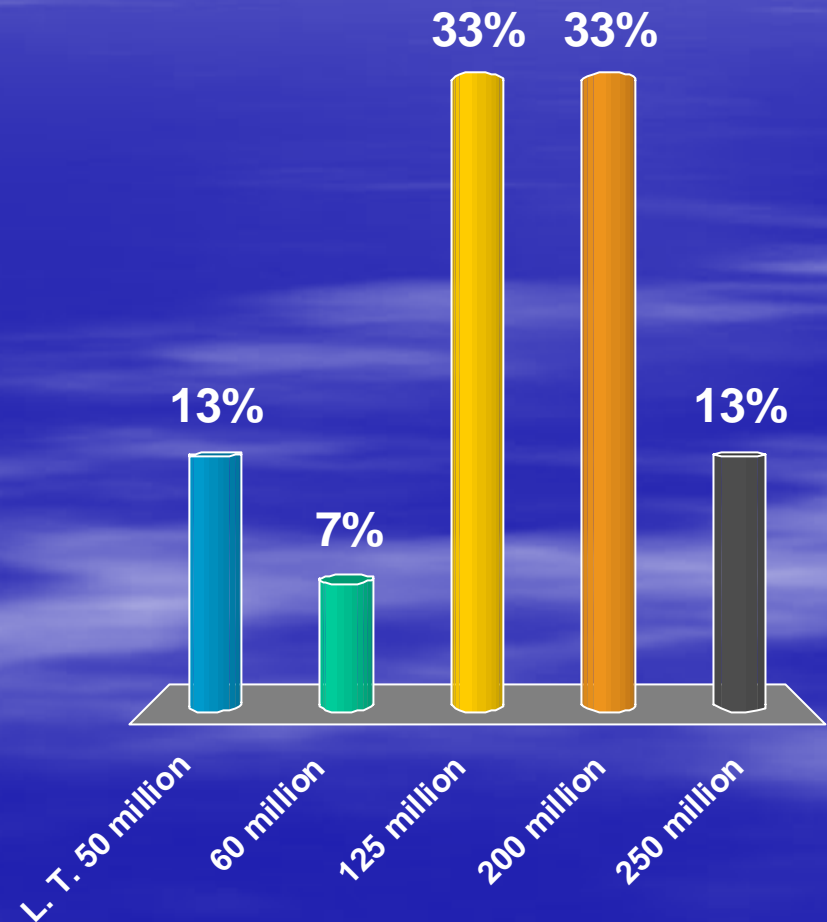
# For a typical US railroad, coal represents what percent of operating revenue

1. 5 to 10%
2. 11 to 15%
3. 15 to 18%
- ✓ 4. 19 to 26%
5. G.T. 26%



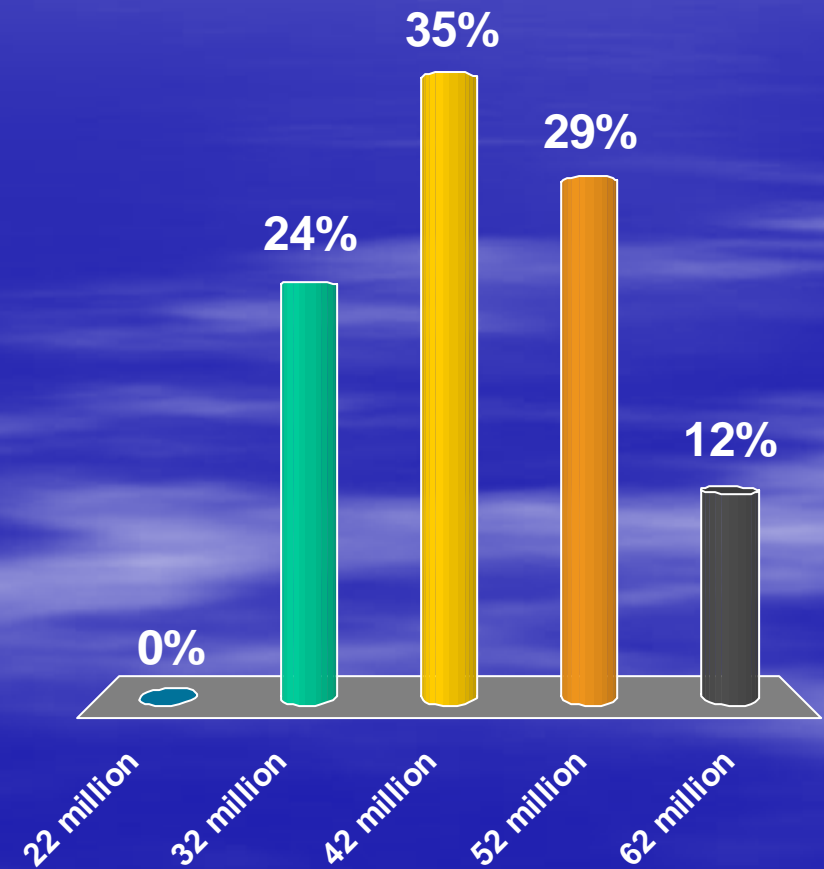
# How many tons of coal were transported on the US river system in 2004?

1. L. T. 50 million
2. 60 million
3. 125 million
- ✓ 4. 200 million
5. 250 million



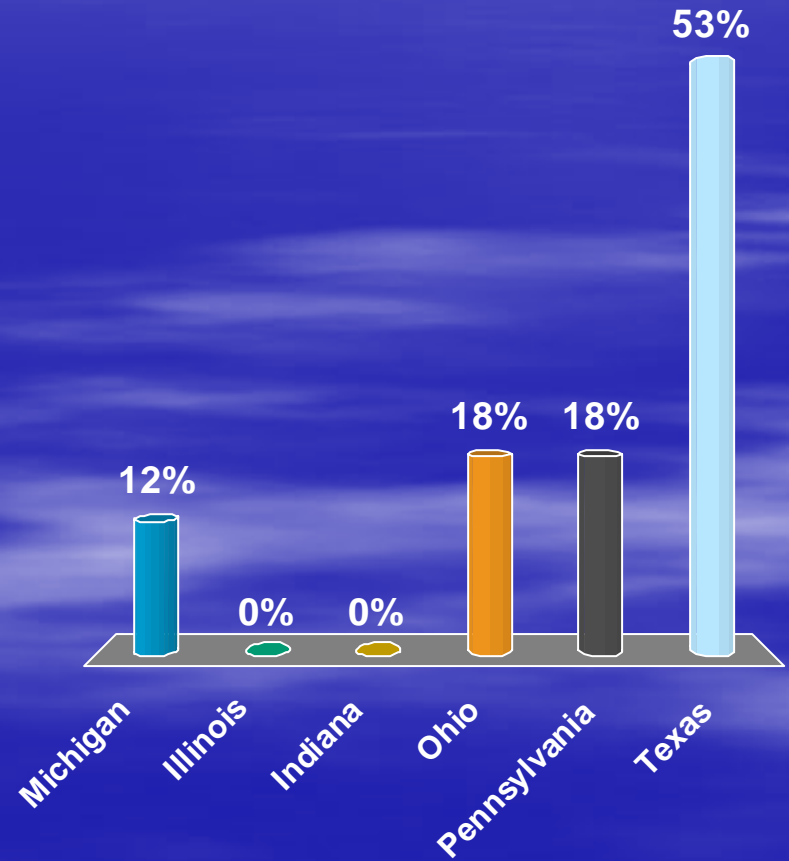
# How many tons of coal were shipped on the Great Lakes in 2006?

1. 22 million
2. 32 million
- ✓ 3. 42 million
4. 52 million
5. 62 million



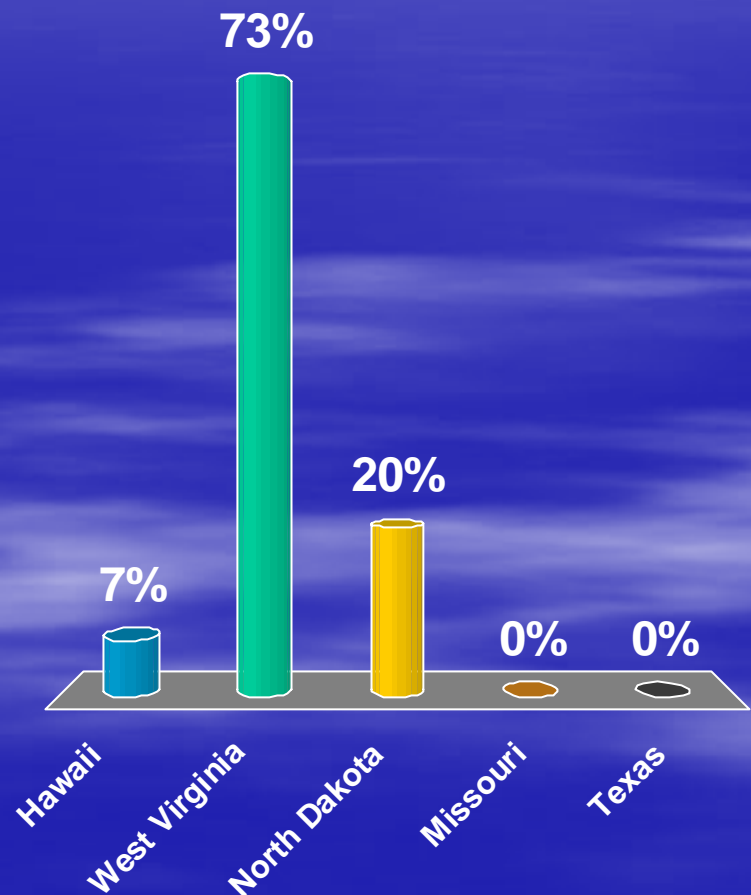
# The state that consumes the most coal is?

1. Michigan
2. Illinois
3. Indiana
4. Ohio
5. Pennsylvania
- ✓ 6. Texas



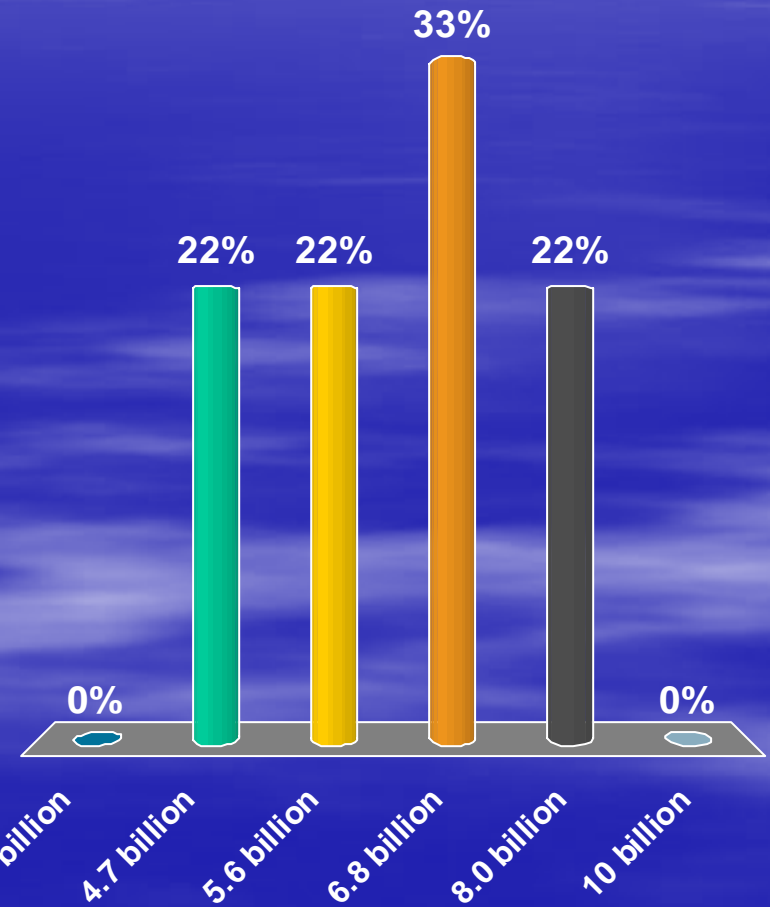
# What state has the largest percentage of its electricity generated by coal?

1. Hawaii
- ✓ 2. West Virginia
3. North Dakota
4. Missouri
5. Texas



# How many tons of coal were mined in the world in 2006?

1. 3.8 billion
2. 4.7 billion
3. 5.6 billion
- ✓ 4. 6.8 billion
5. 8.0 billion
6. 10 billion



**Thank You for Participating!**

National Coal Transportation Association

Charleston, WV

November 1, 2007