

BNSF Railway

NCTA Logistics and Planning Committee

Denver, Colorado – January 20, 2010

Will Cunningham



2009 Joint Line Tons

BNSF	166.705	
UP	176.879	
Total	343.584	- 8.5% v 2008
Trains/Day	61.45	

In millions of tons

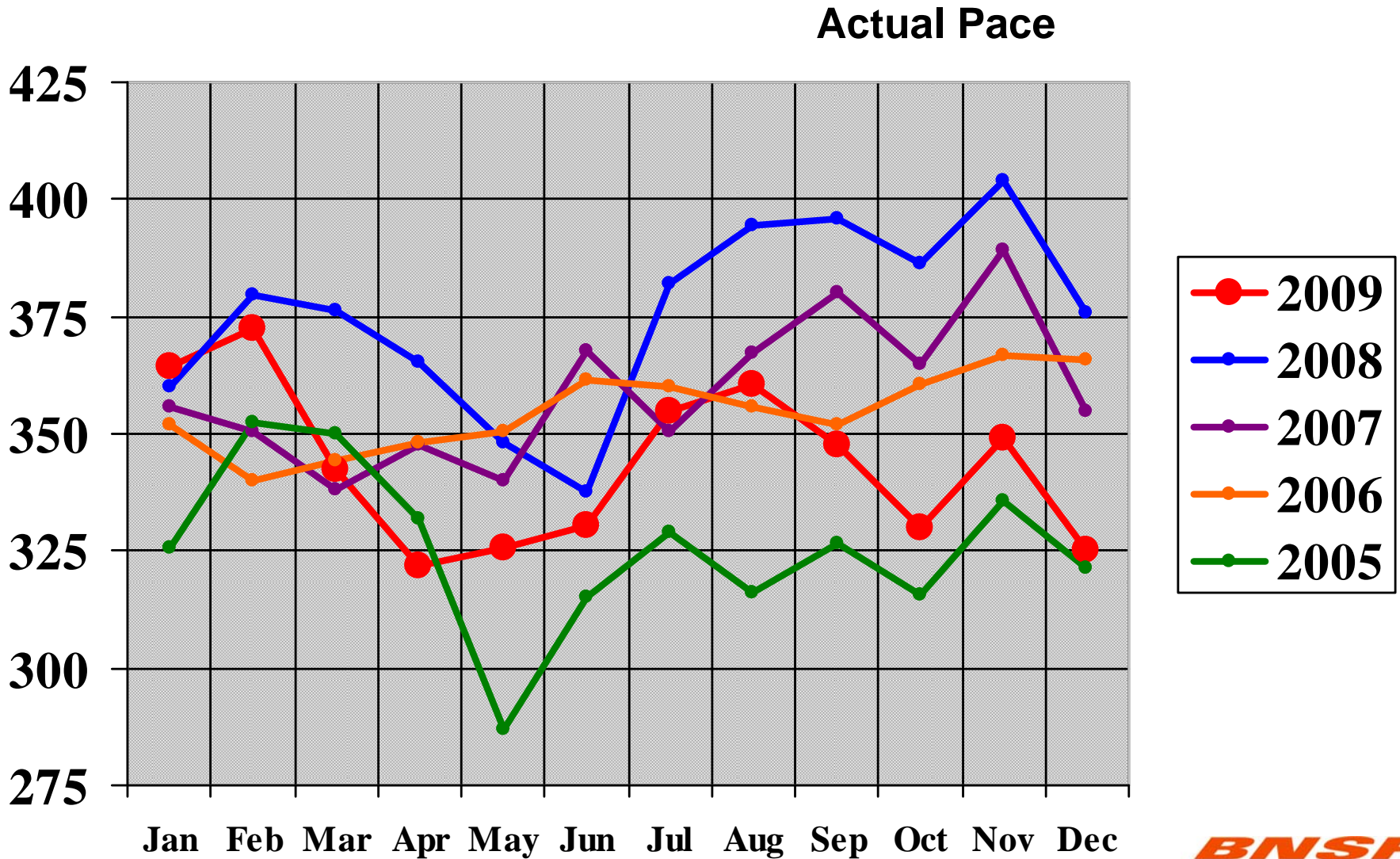
Joint Line

2005 - 2009

	2005	2006	2007	2008	2009
1H	161.9	173.3	173.5	179.5	169.9
2H	163.4	181.5	185.3	195.9	173.7
Year	325.3	354.8	358.8	375.4	343.6
Trains/Day	60.6	65.4	65.2	67.8	61.4
2H v 1H tons	0.9%	4.8%	6.8%	9.1%	2.4%

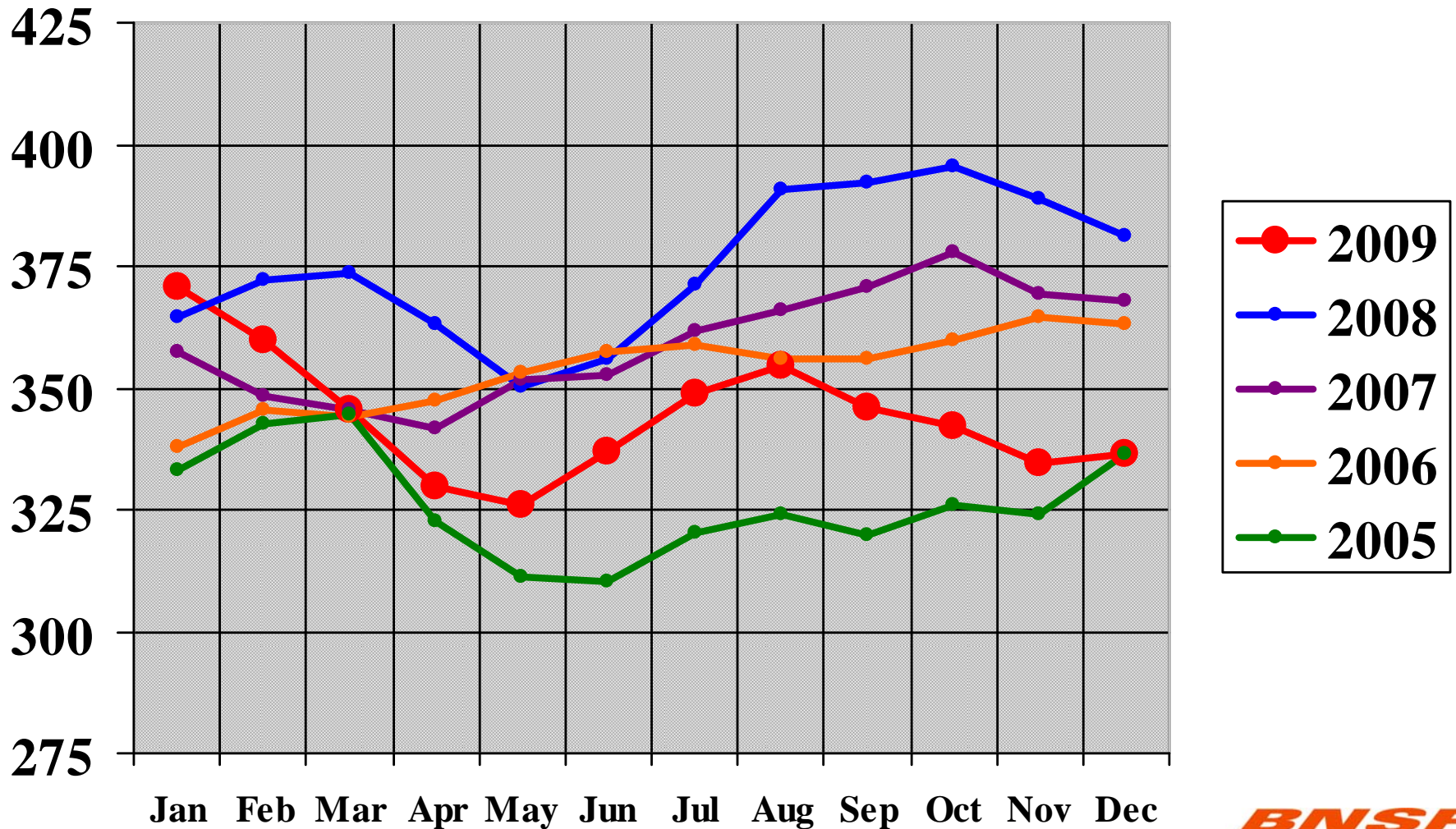
In millions of tons

Joint Line Pace by Month 2005-2009



Joint Line Pace by Month 2005-2009

3 - Month Rolling Average



2009 Lost Loading Opportunities

Joint Line

BNSF Caused	878
Mine Caused	461
Utility Caused	355
Planned	40
Unplanned	315
Total LLOs	1694

BNSF
RAILWAY