

NCTA - Western L&P Committee  
Omaha, Nebraska  
July 20, 2005

Steve Behn



# BNSF Western Coal Originated

## Year over Year Jan Thru Jun 2004 v 2005

	2004	2005	
● Joint Line	69.670	71.562	+2.7%
● Campbell Sub	27.128	29.376	+8.3%
SPRB	96.798	100.939	+4.3%
● Montana	13.349	13.682	+2.5%
PRB Total	110.147	114.620	+4.1%
● Southwest	5.253	4.404	-16.2%
Total Western Coal	115.401	119.024	+3.1%

# Total PRB Coal Originated (BNSF & UP)

Year over Year Jan Thru Jun 2004 v 2005

	2004	2005	
● <b>Joint Line</b>	<b>156.895</b>	<b>161.935</b>	<b>+3.2%</b>
● <b>SPRB</b>	<b>184.023</b>	<b>191.311</b>	<b>+4.0%</b>
● <b>PRB Total</b>	<b>197.372</b>	<b>204.993</b>	<b>+3.9%</b>

# Current Pace

YTD Thru June 2005

	<b>Trains/Day</b>	<b>Pace</b>
● <b>Joint Line Total</b>	<b>61.0</b>	<b>326.6 mmT</b>
● <b>Campbell Sub</b>	<b>11.3</b>	<b>59.2 mmT</b>
● <b>SPRB Total</b>	<b>72.3</b>	<b>385.8 mmT</b>
● <b>BNSF SPRB</b>	<b>38.8</b>	<b>203.6 mmT</b>

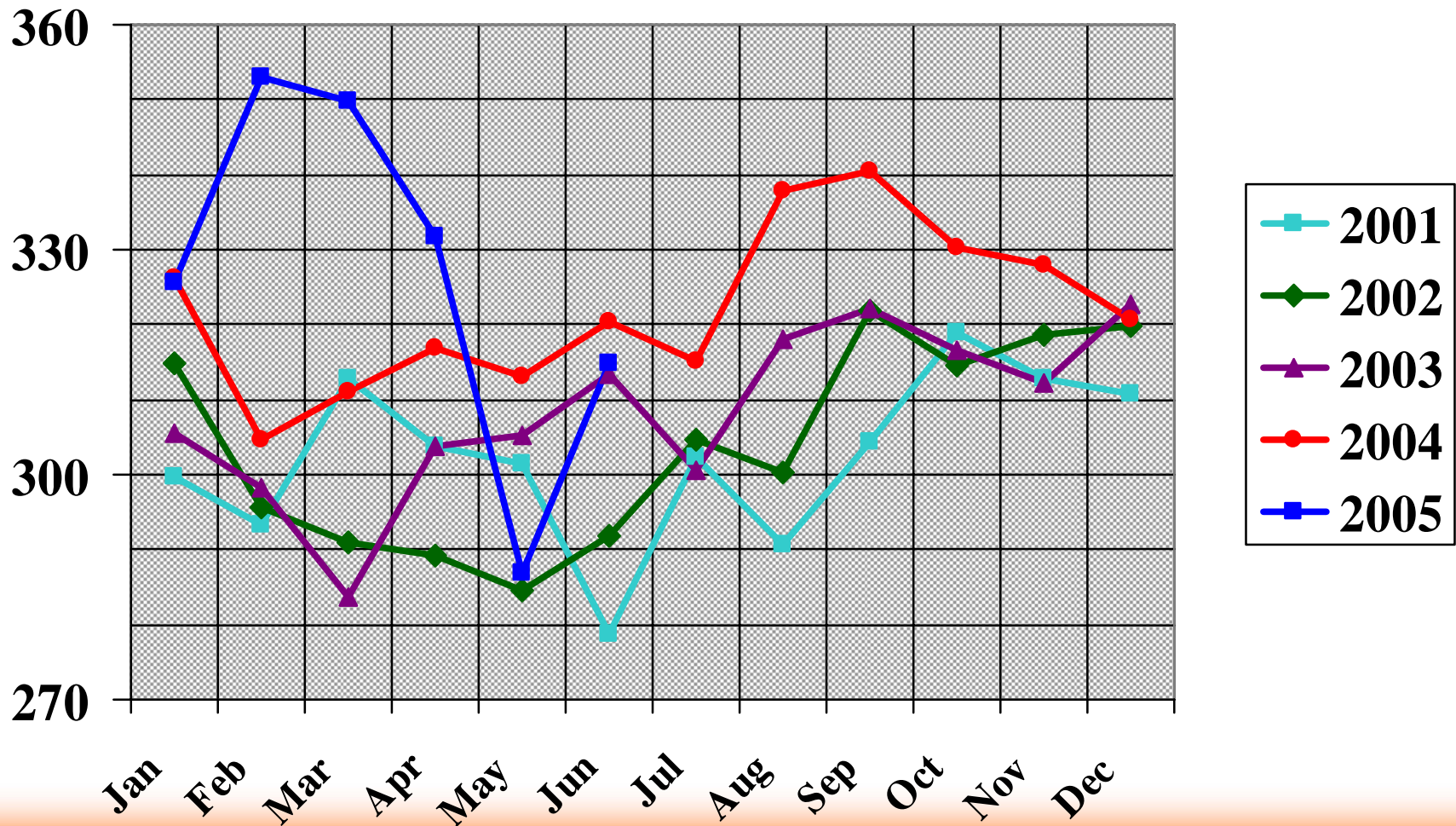
## PRB Coal Production - Last 7 Halves

**2002 - 2005**

	<b>2002</b>	<b>2003</b>	<b>2004</b>	<b>2005</b>
● <b>Joint Line</b>	<b>146.9 - 157.9</b>	<b>149.6 - 159.0</b>	<b>156.9 - 165.2</b>	<b>161.9</b>
● <b>Campbell</b>	<b>26.0 - 26.1</b>	<b>25.0 - 26.2</b>	<b>27.1 - 28.5</b>	<b>29.4</b>
<b>SPRB</b>	<b>170.0 - 184.0</b>	<b>174.6 - 185.2</b>	<b>184.0 - 193.7</b>	<b>191.3</b>
● <b>Montana</b>	<b>13.7 - 13.9</b>	<b>12.2 - 14.1</b>	<b>13.3 - 15.7</b>	<b>13.7</b>
<b>PRB</b>	<b>185.7 - 197.9</b>	<b>186.9 - 199.2</b>	<b>197.4 - 209.4</b>	<b>205.0</b>

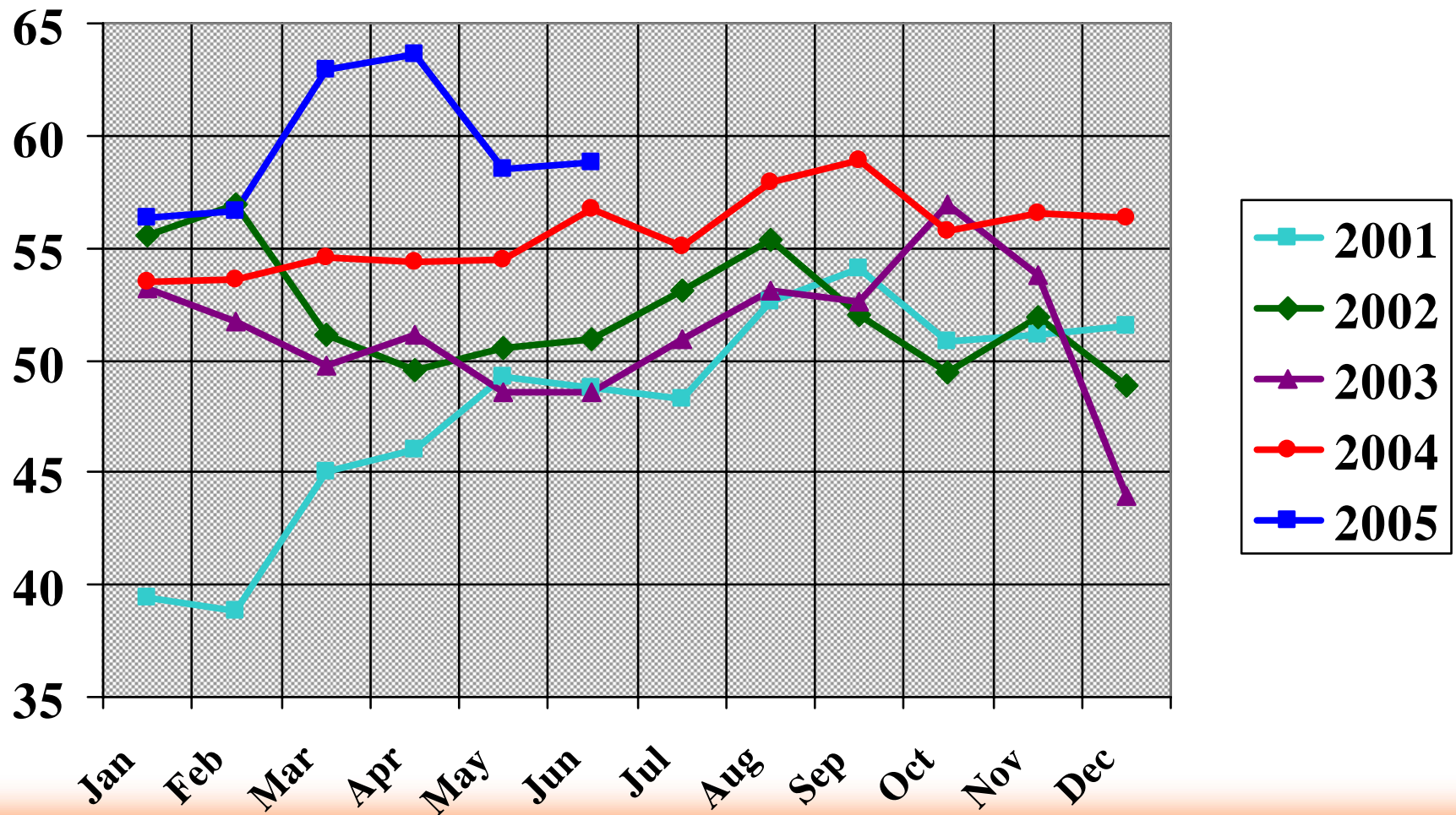
# Joint Line Pace by Month

2001 - 2005

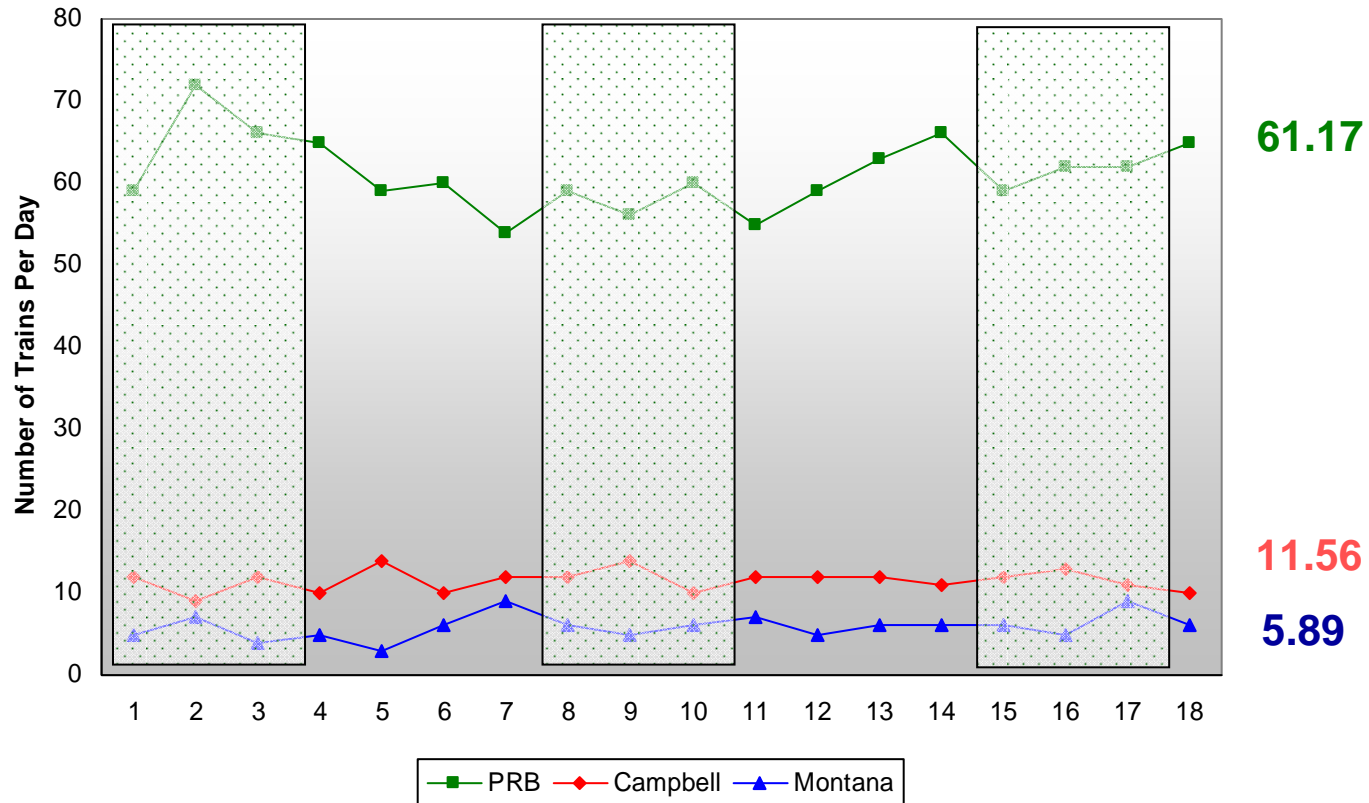


# Campbell Sub Pace by Month

2001 - 2005



# MTD Loads Per Day through July 18, 2005



## Current Market Demand Forecast (from Mines)

2005

● Orin Sub	<b>354.6 mm Tons</b>
● Campbell Sub	<b>63.4 mm Tons</b>
<b>SPRB</b>	<b>418.0 mm Tons</b>
● Montana	<b>28.8 mm Tons</b>
<b>PRB Total</b>	<b>446.8 mm Tons</b>

## Initial Forecast Next Year (from Mines)

2006

● Orin Sub	<b>366 mm Tons</b>
● Campbell Sub	<b>69 mm Tons</b>
<b>SPRB</b>	<b>435 mm Tons</b>
● Montana	<b>29 mm Tons</b>
<b>PRB Total</b>	<b>454 mm Tons</b>