

BNSF Railway

NCTA Logistics and Planning Committee
Dallas, Texas – February 20, 2008

Steve Behn



2007 Joint Line Coal Shipped

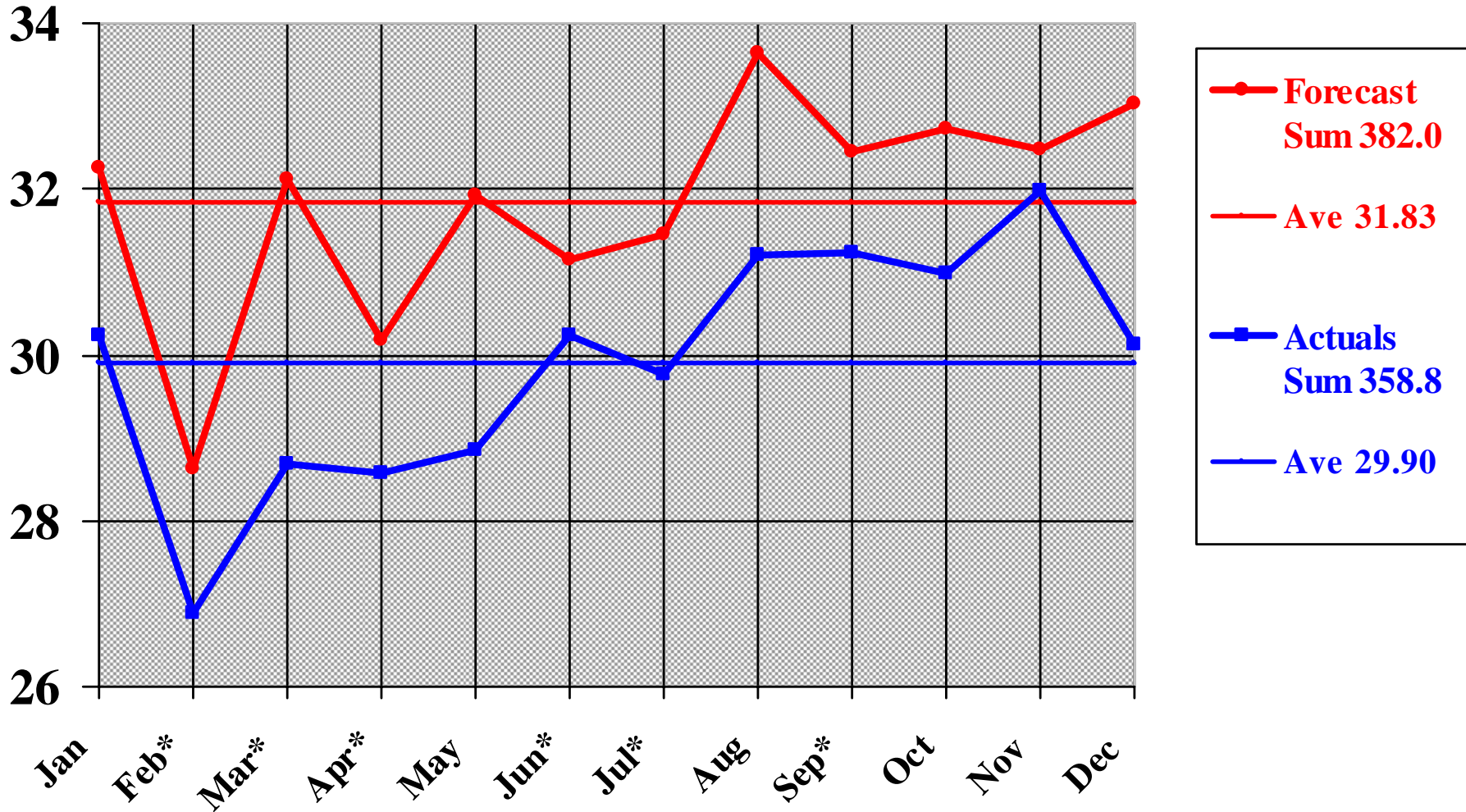
Joint Line

- **BNSF** **163.9 mm Tons**
- **UP** **194.9 mm Tons**

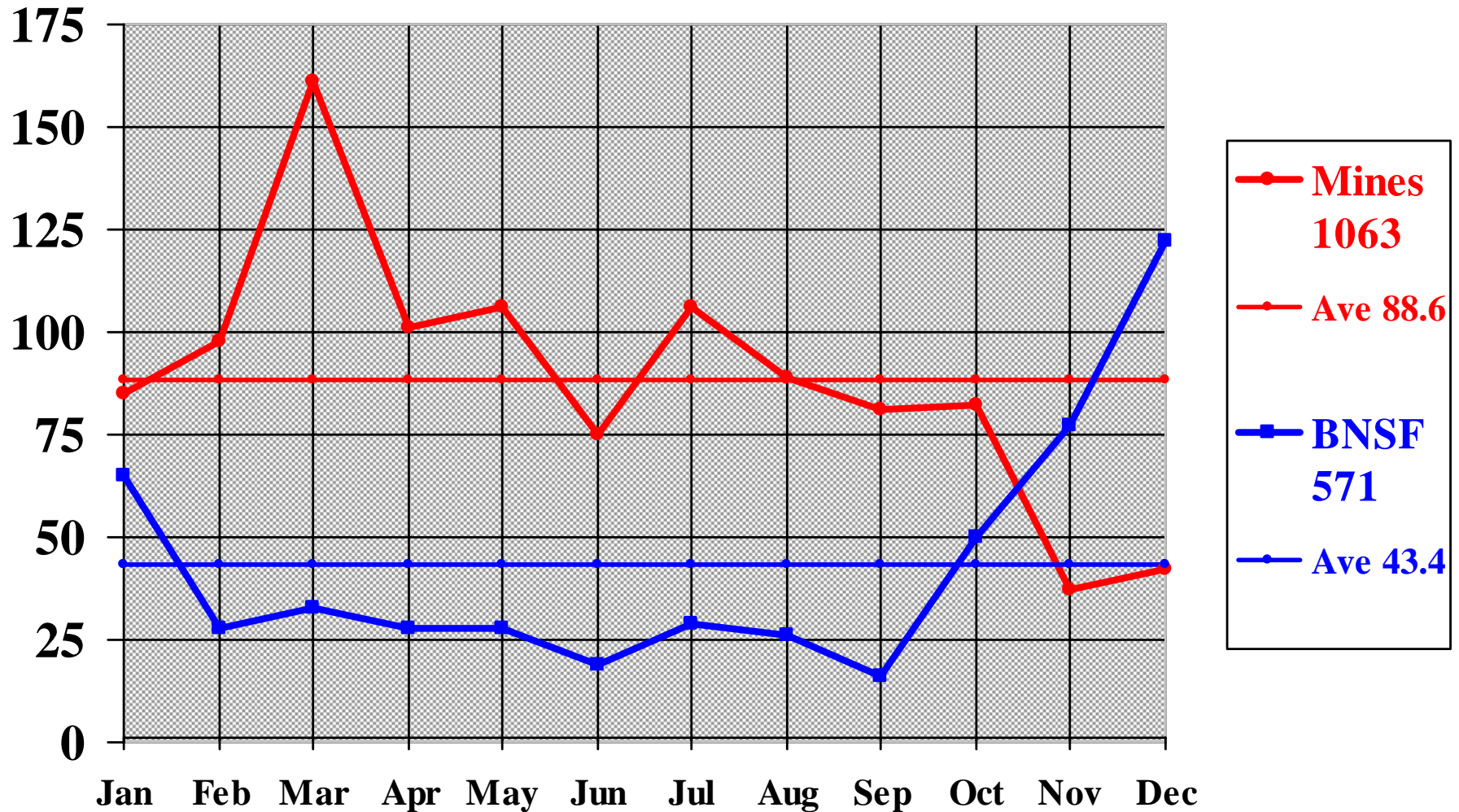
Total Joint Line 358.8 mm Tons

2007 v. 2006 + 1.12 %

2007 Joint Line Forecasts & Actuals



Joint Line Lost Loading Opportunities



Powder River Division Expansion

ORIN SUB

- **Donkey Creek to Caballo (MP-15.4) – 3rd Main**
In service July 17, 2007
- **Caballo to Reno (MP 15.4 -39.9) – 3rd Main**
MP 26.9 to 39.9 – In service September 18, 2007
MP 15.4 to 26.9 – In service October 24, 2007
West Rojo Crossover scheduled Feb 20
- **Logan Hill to Bill (MP 59.7 to 80.8) – 4th Main**
Remaining – Ballast and Surfacing
Scheduled in service – late Spring

Powder River Division Track Projects

BLACK HILLS SUB

- **Moorcroft to Rozet, 8 miles DT – in service**
- **Thornton to Kara, 6 miles DT – in Service**

VALLEY SUB

- **Bayard to Degraw, 6 miles DT – in service**
- **Enterprise to Stuart, 11 miles DT - in service**

ANGORA SUB

- **Angora to Northport, Phase 1&2 14 miles - in service**

SAND HILLS SUB

- **Mason to Berwyn, 10 miles DT – in service**

BNSF
RAILWAY

2007 Lost Loading Opportunities

Joint Line Lost Loading Opportunities

◆ Mines	1063
◆ BNSF	571