

# BNSF Railway

**NCTA Logistics and Planning Committee  
Fort Worth, Texas - February 13, 2007**

**Will Cunningham**



# PRB Total Tons Shipped 1999 - 2006

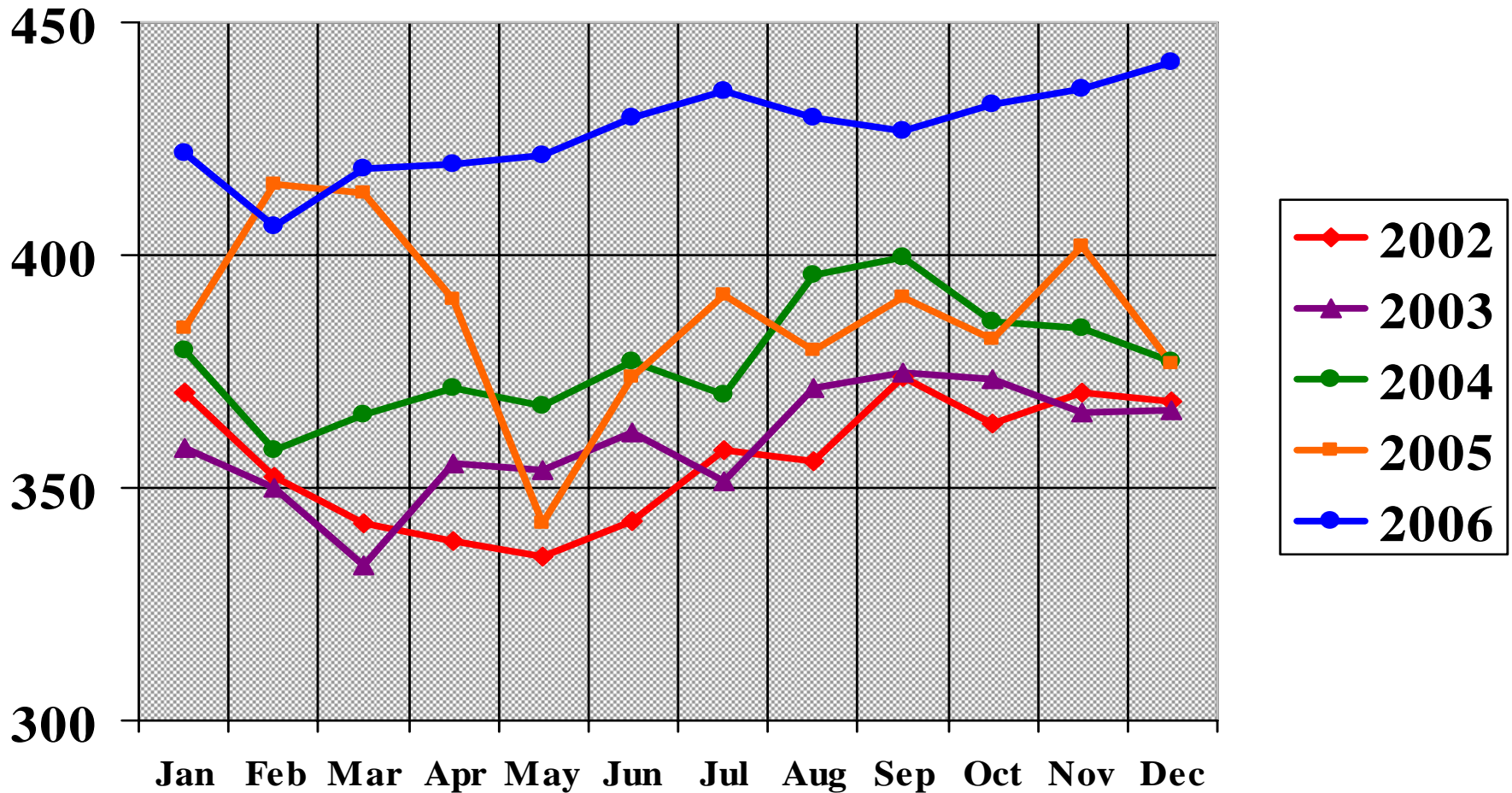
1999	2000	2001	2002	2003	2004	2005	2006
344.2	347.5	378.8	383.6	386.1	406.8	415.0	457.5
YOY +	1.5 %	9.0 %	1.3 %	0.7 %	5.4 %	2.0 %	10.2 %

*In Millions of Tons*

Annual compound percentage increase 1999 to 2006 = **4.2 %**

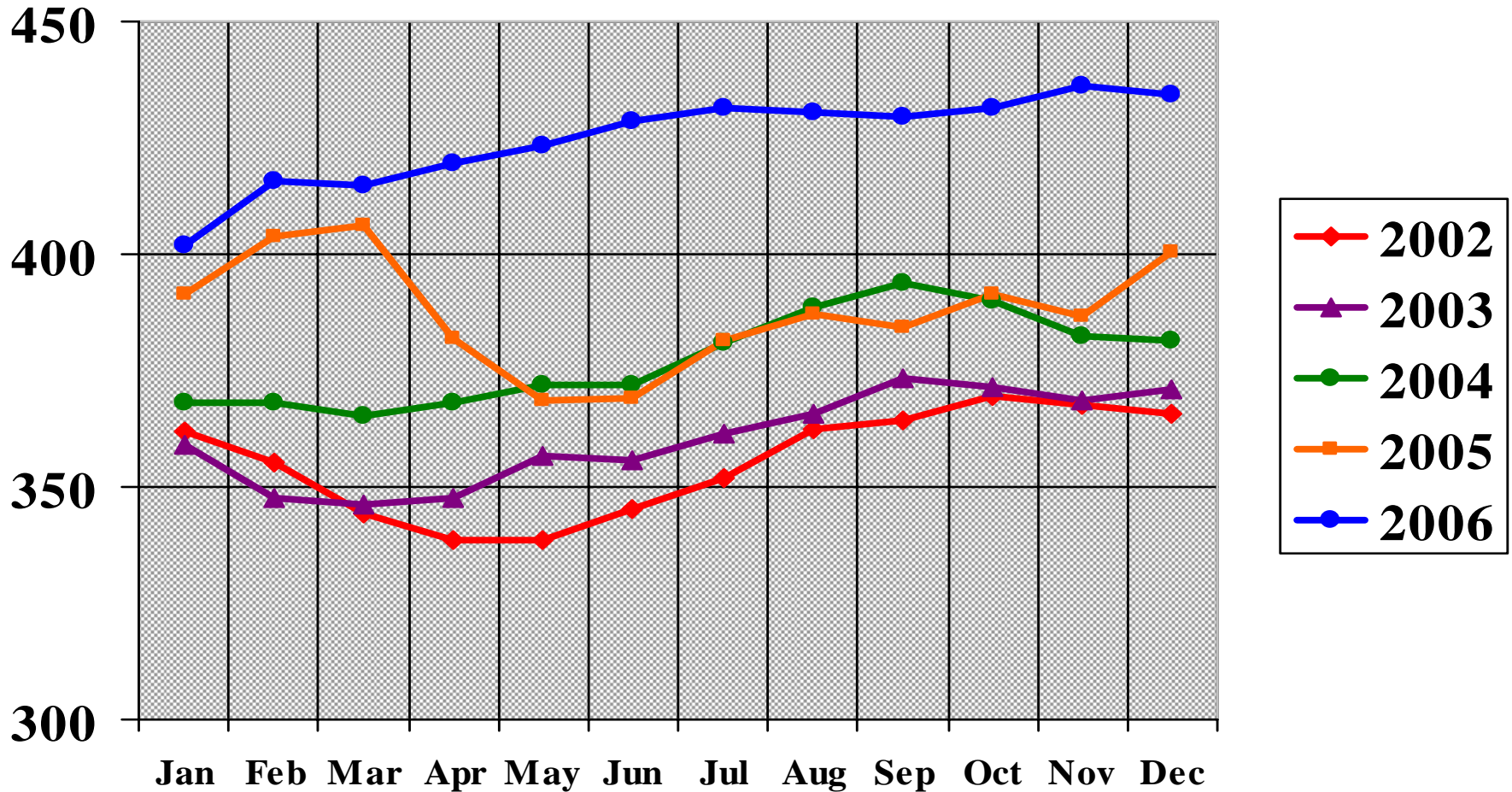
# SPRB Pace by Month

## Actual Pace



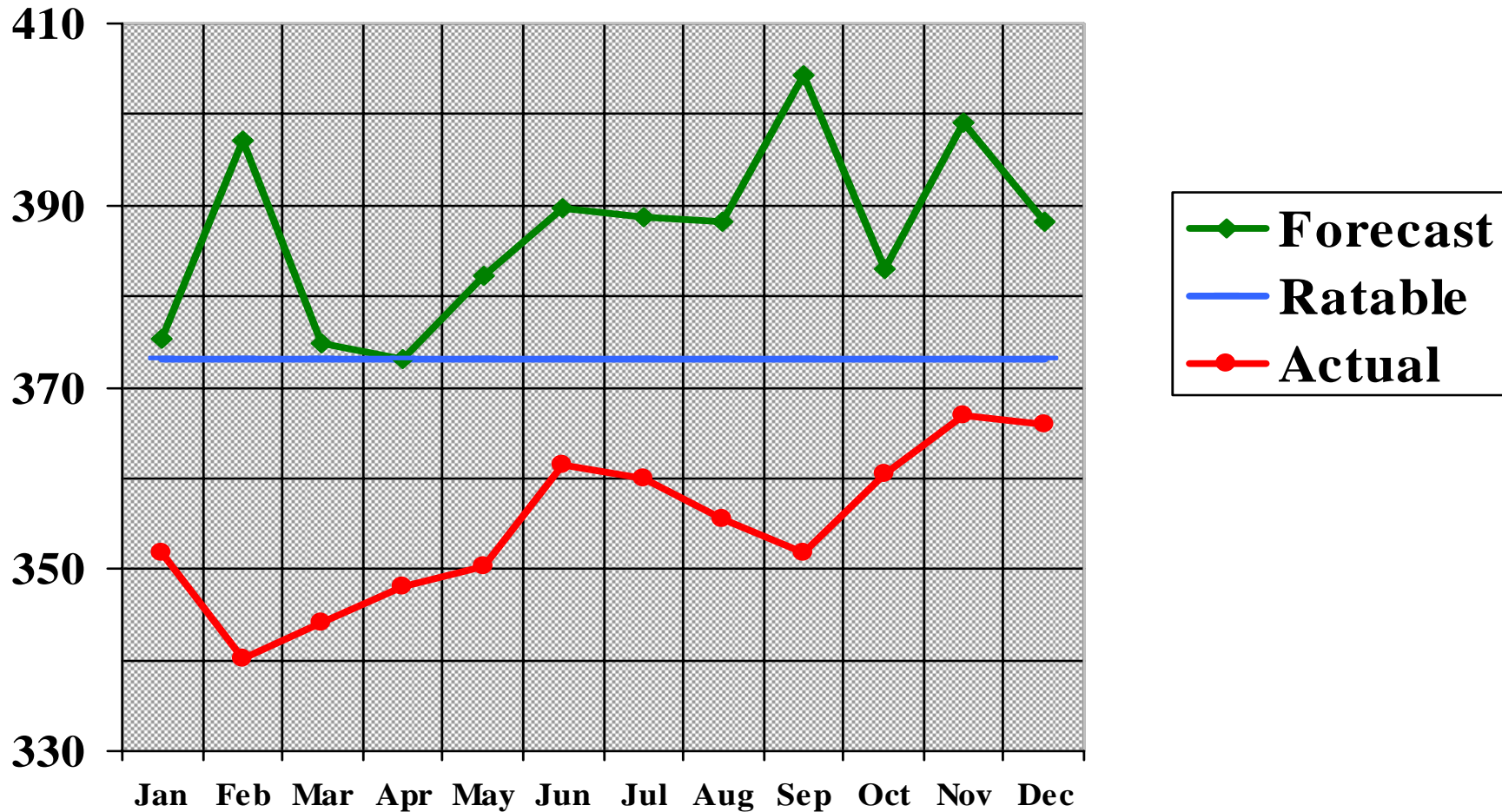
# SPRB Pace by Month

3 Month Rolling Average



# Joint Line Forecast by Month - 2006

## Annual Pace by Month - mmT

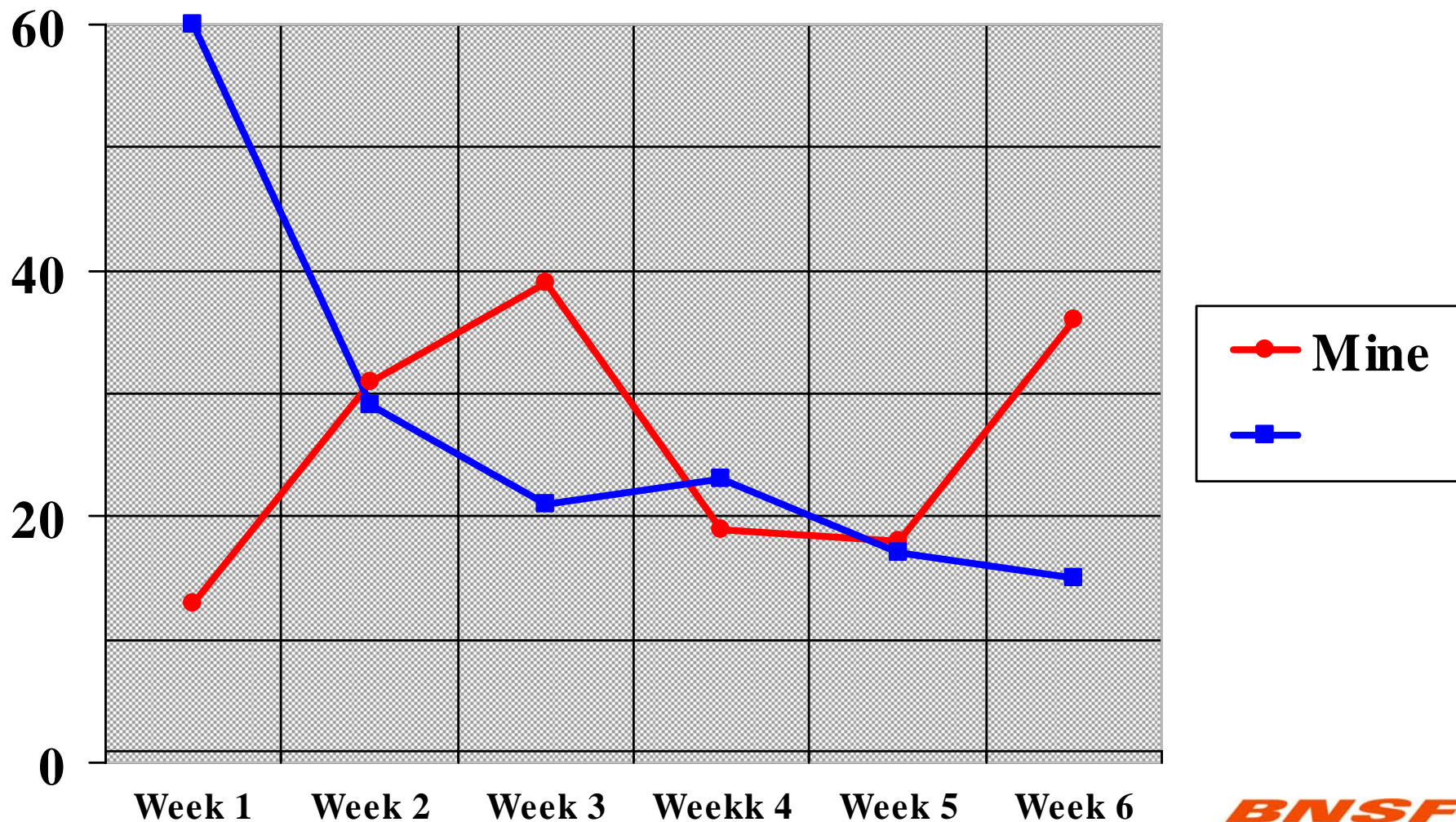


# Current Producer Forecast - 2007

	<b>2007 *</b> <b>Forecast</b>
● <b>Joint Line</b>	<b>383.0</b>
● <b>Campbell Sub</b>	<b>77.2</b>
● <b>Montana</b>	<b>32.7</b>
<b>PRB Total</b>	<b>492.9</b>

*\* Sum of Producers Forecasts in Millions of Tons*

# PRB Lost Loading Opportunities - 2007



***BNSF***  
***RAILWAY***