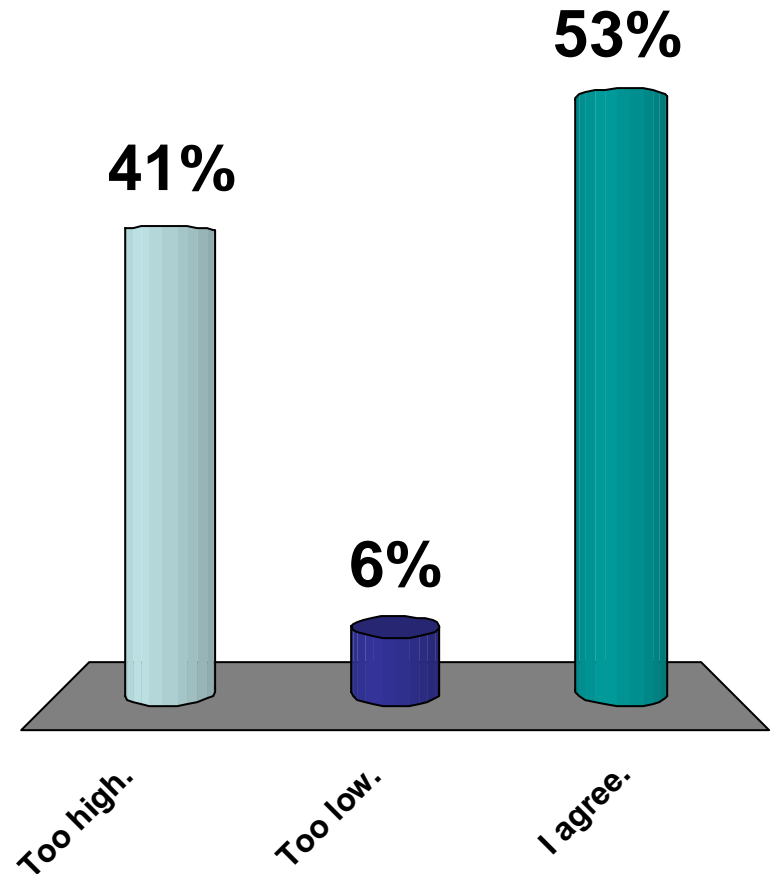


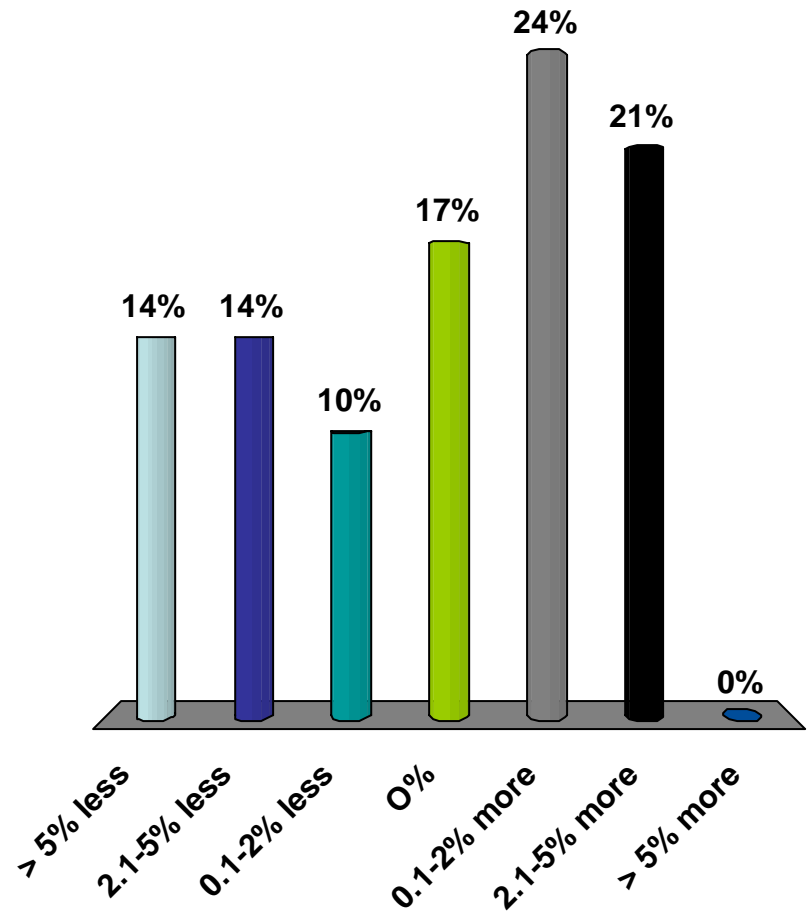
# Do you agree with current PRB tonnage forecast for 2009 of 350 million tons?

1. Too high.
2. Too low.
3. I agree.



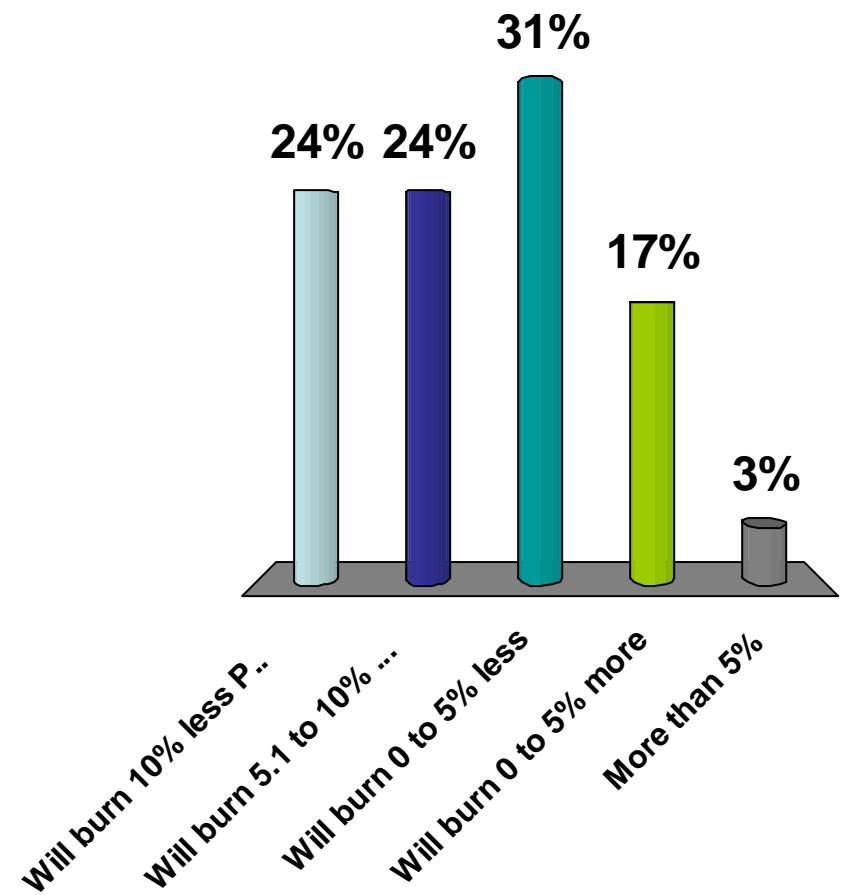
# What percentage growth do you see in 2010 over 2009 projections?

1. > 5% less
2. 2.1-5% less
3. 0.1-2% less
4. 0%
5. 0.1-2% more
6. 2.1-5% more
7. > 5% more



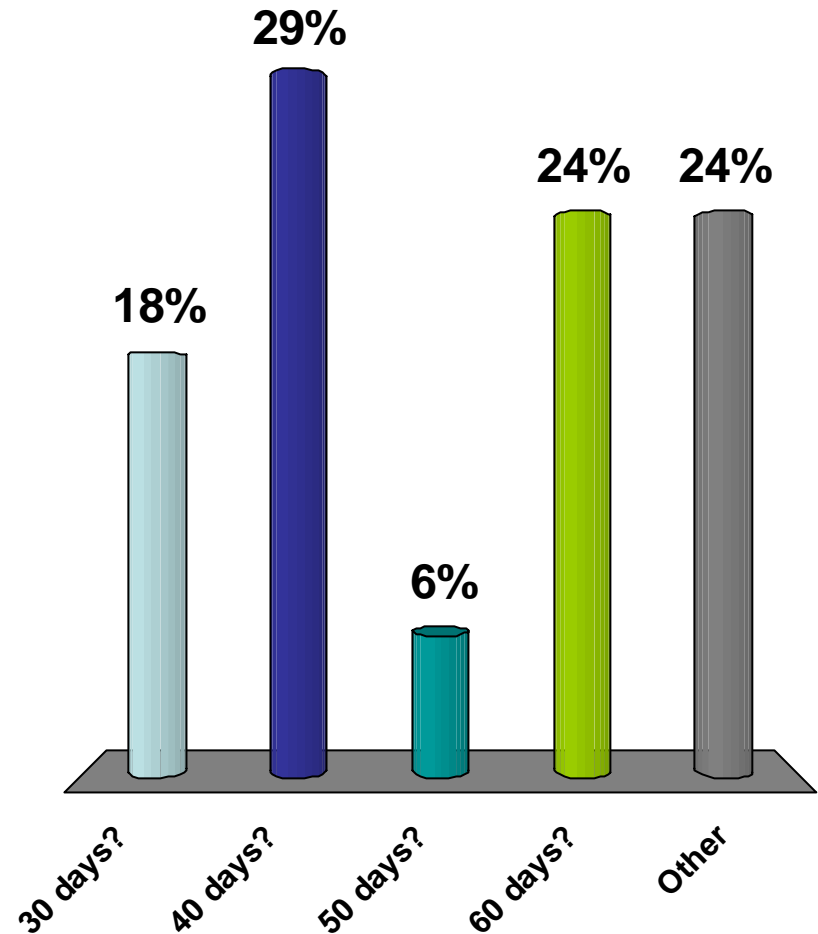
# In 2009 power companies east of the Mississippi

1. Will burn 10% less PRB coal
2. Will burn 5.1 to 10% less PRB coal
3. Will burn 0 to 5% less
4. Will burn 0 to 5% more
5. More than 5%



# What is your targeted stockpile in days?

1. 30 days?
2. 40 days?
3. 50 days?
4. 60 days?
5. Other



# At the end of 2009 our inventory will be

1. > 10% less than forecast
2. 5.1 to 10% less than forecast
3. 0 to 5% less than forecast
4. 0 to 5% more than forecast
5. More than 5% over forecast

