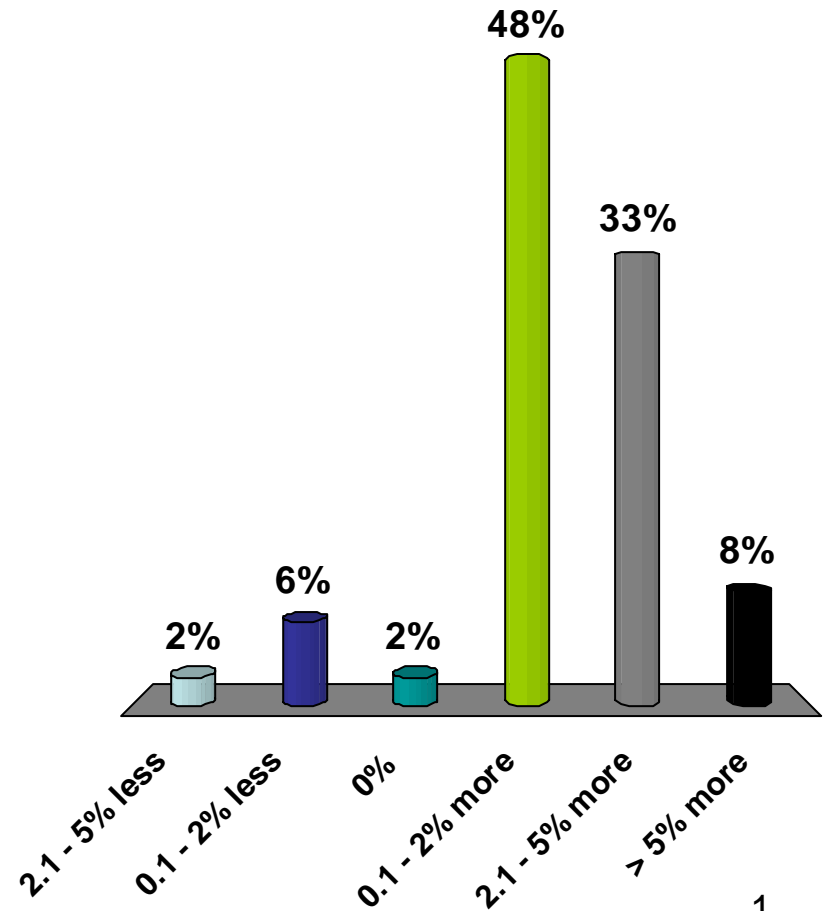


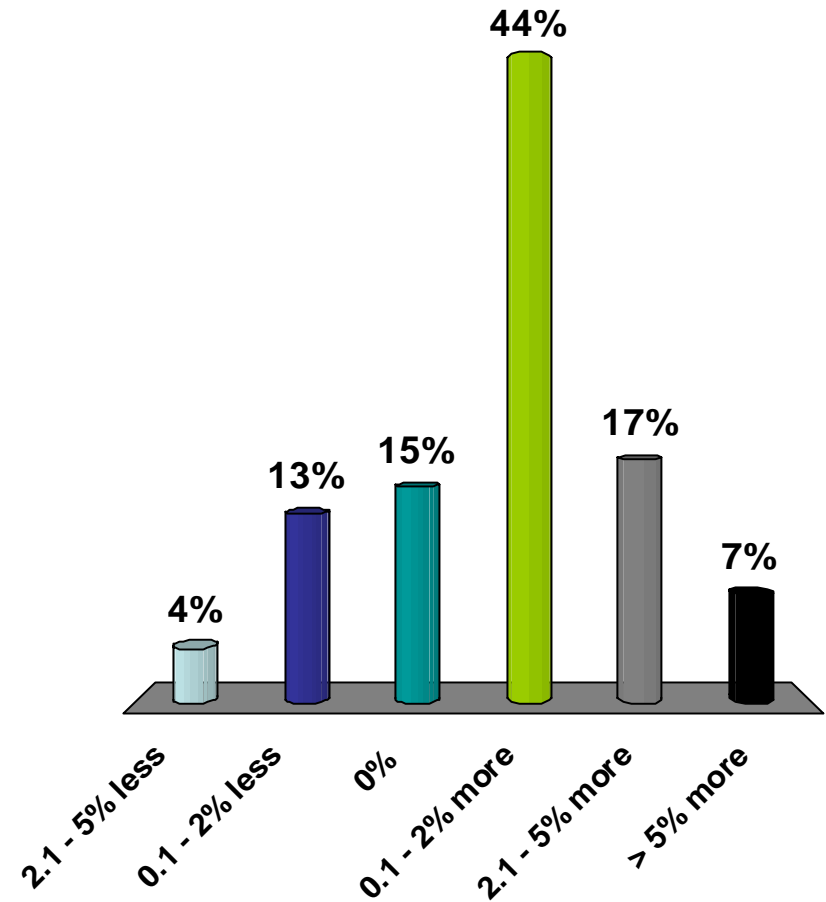
Compared to 2007 we expect our consumption/production in 2008 to be:

1. 2.1 - 5% less
2. 0.1 - 2% less
3. 0%
4. 0.1 - 2% more
5. 2.1 - 5% more
6. > 5% more



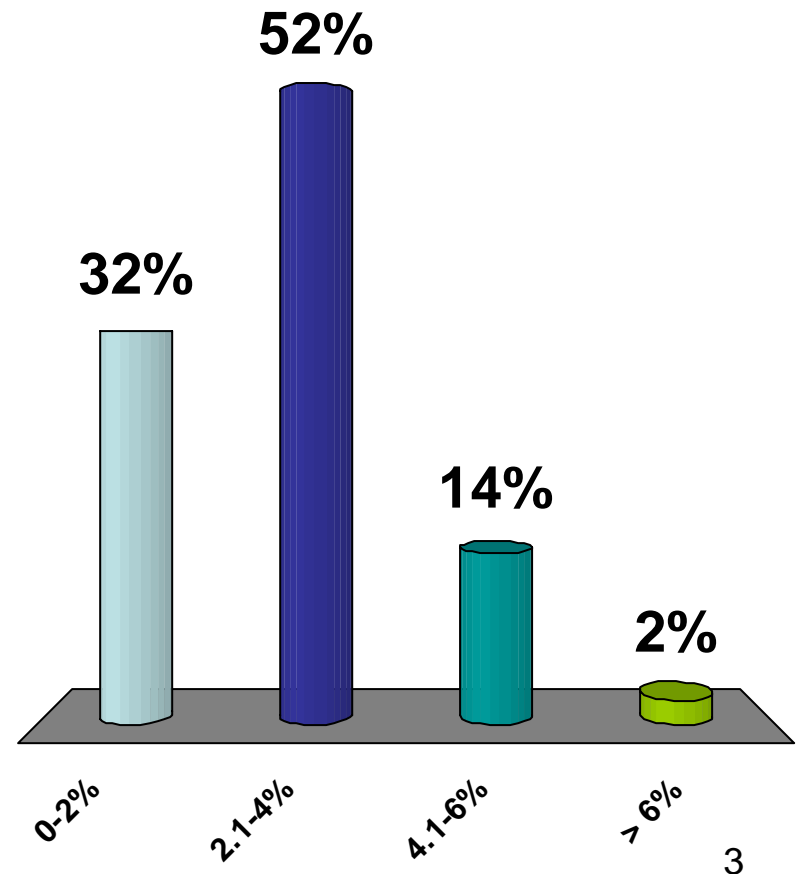
Compared to 2007 we expect our consumption/production in 2008 to be:

1. 2.1 - 5% less
2. 0.1 - 2% less
3. 0%
4. 0.1 - 2% more
5. 2.1 - 5% more
6. > 5% more



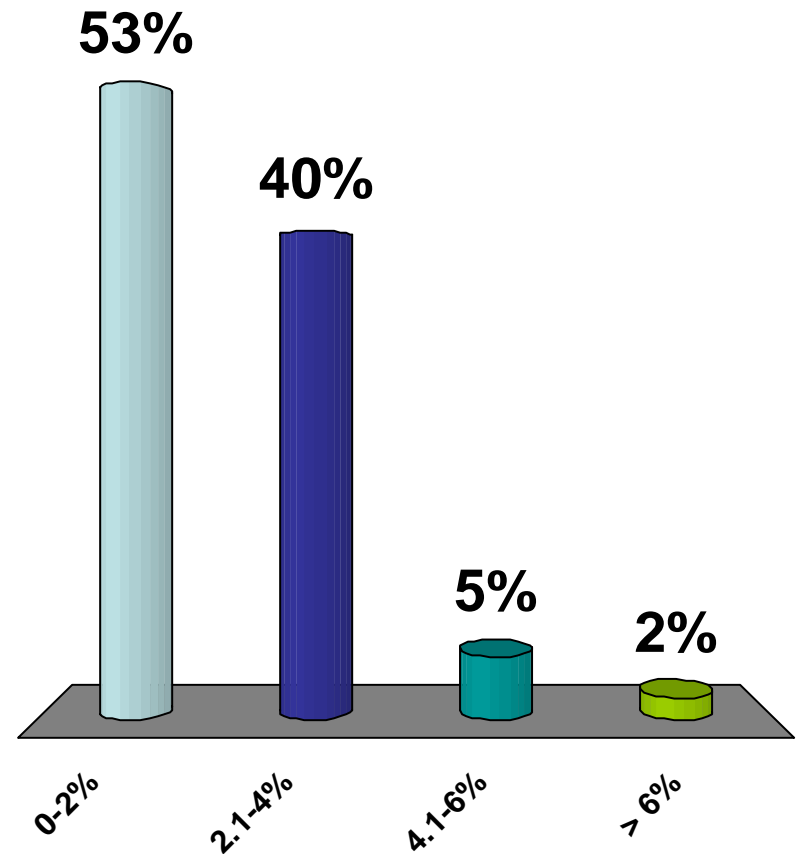
What percentage growth do you see for the Joint Line in 2008:

1. 0-2%
2. 2.1-4%
3. 4.1-6%
4. > 6%



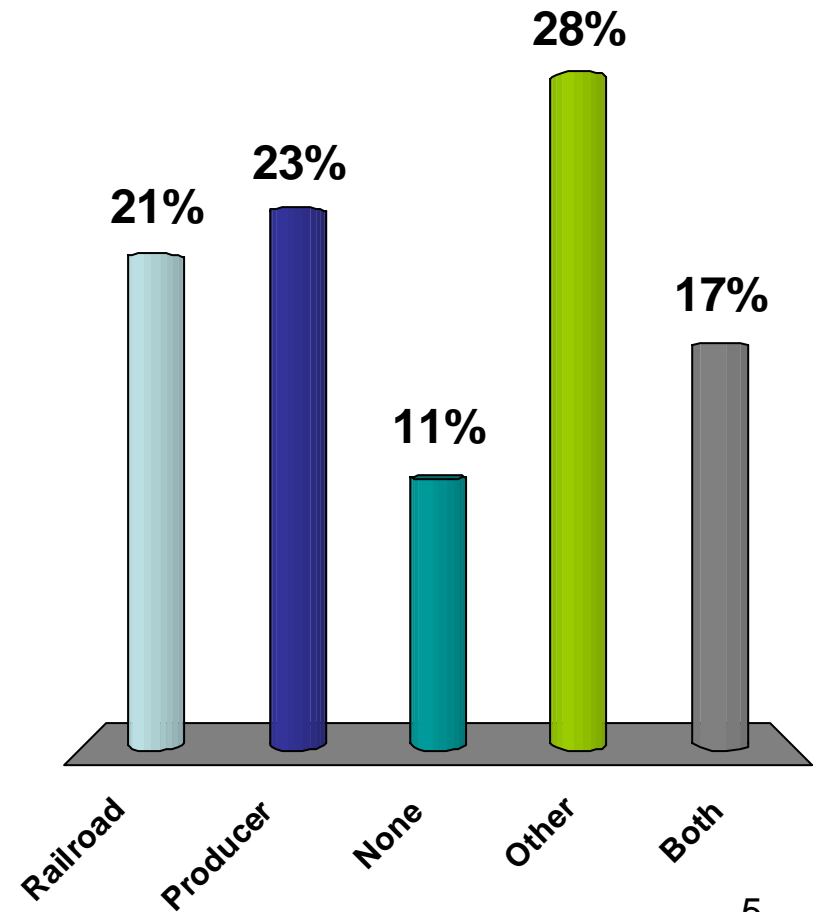
What percentage growth do you see for the Joint Line in 2008:

1. 0-2%
2. 2.1-4%
3. 4.1-6%
4. > 6%



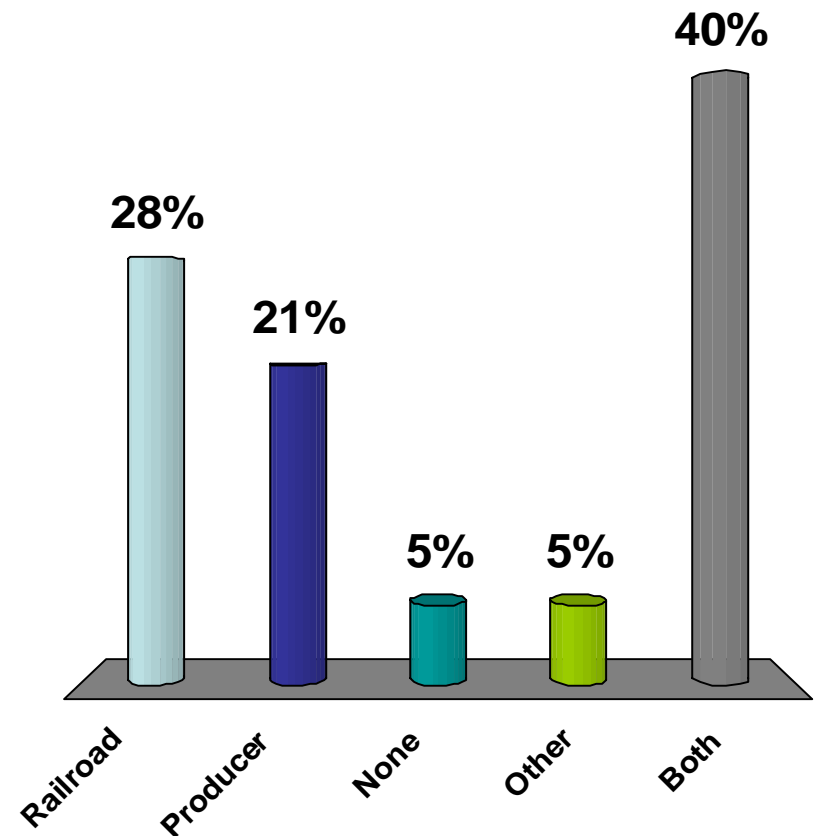
What do you see as the main constraint on the Joint Line:

1. Railroad
2. Producer
3. None
4. Other
5. Both



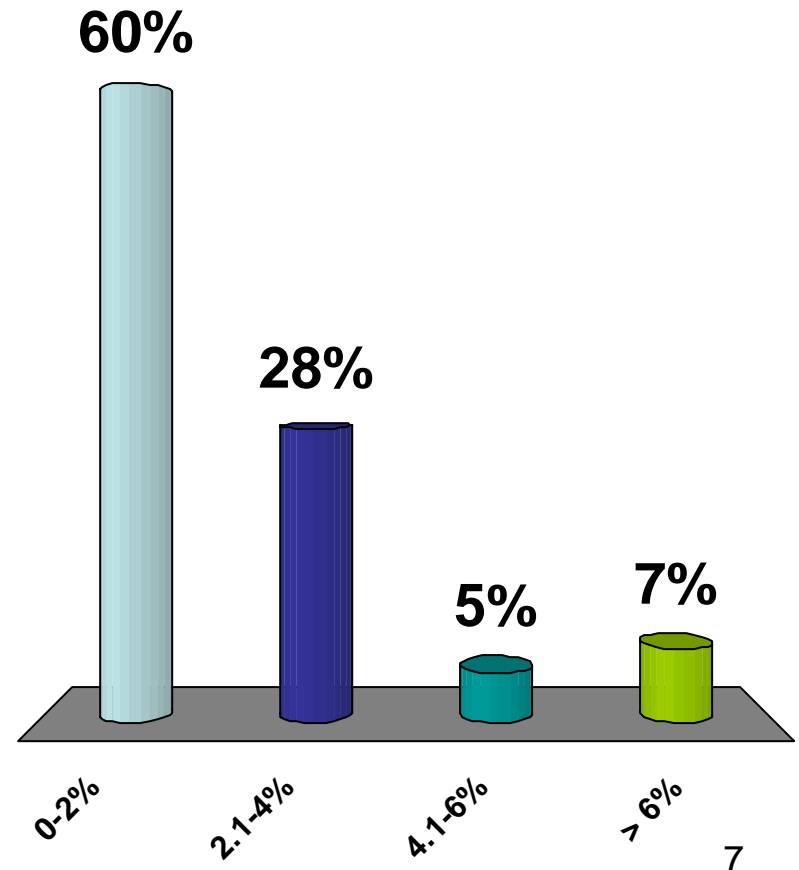
What do you see as the main constraint on the Joint Line:

1. Railroad
2. Producer
3. None
4. Other
5. Both



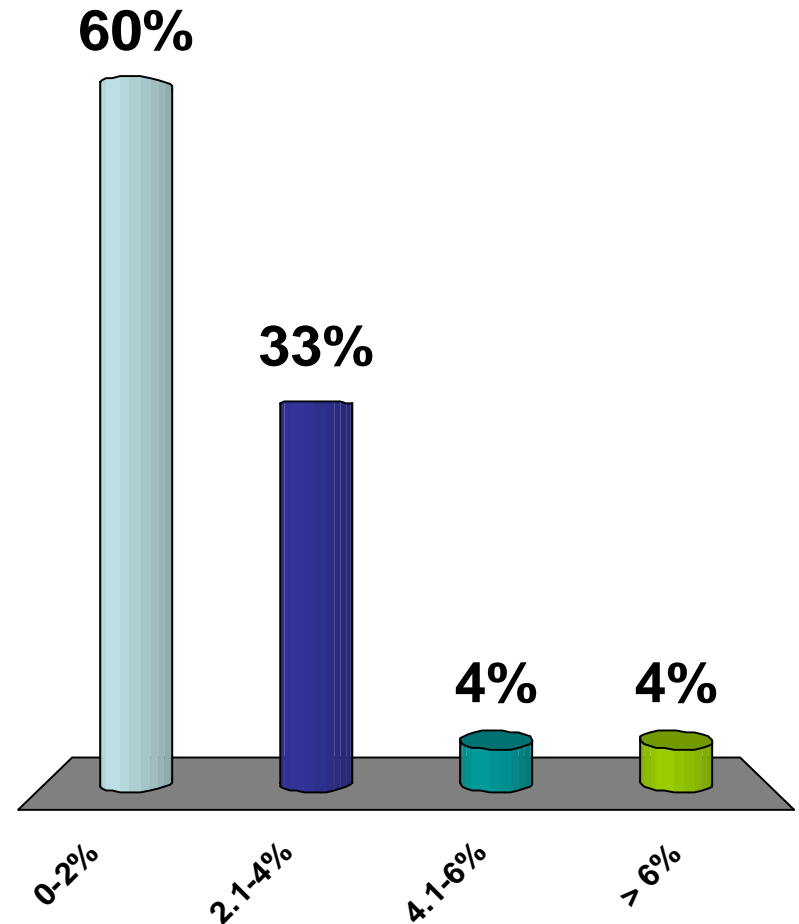
What do you see as the percentage growth for the mines north of Reno Jct.:

1. 0-2%
2. 2.1-4%
3. 4.1-6%
4. > 6%



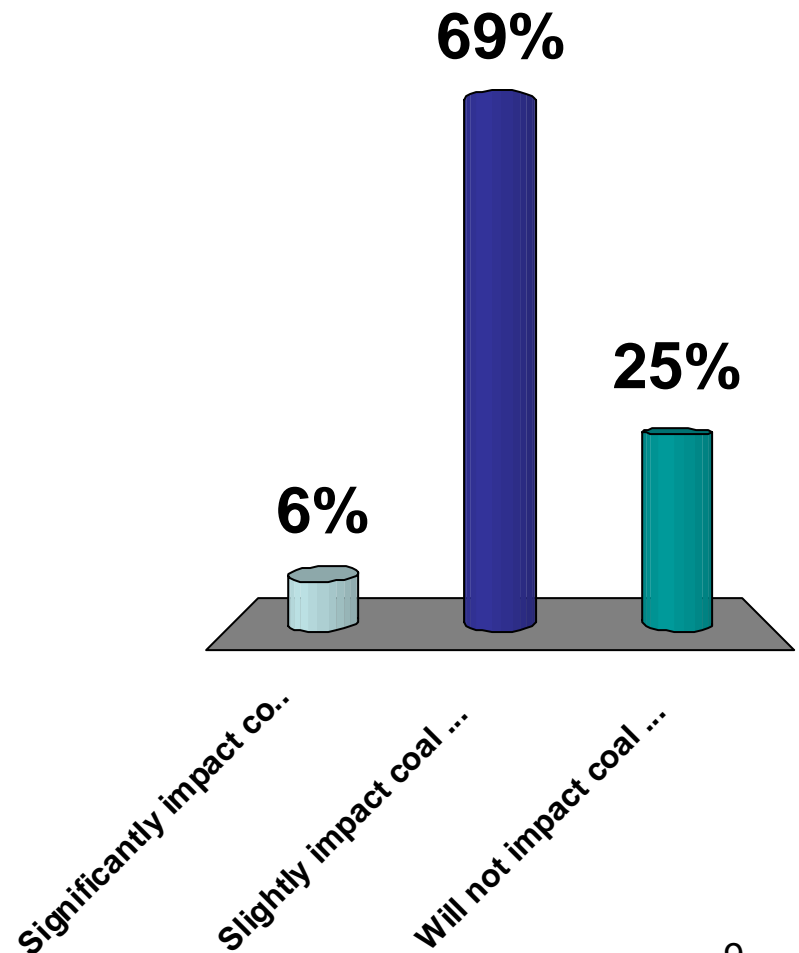
What do you see as the percentage growth for the mines north of Reno Jct.:

1. 0-2%
2. 2.1-4%
3. 4.1-6%
4. > 6%



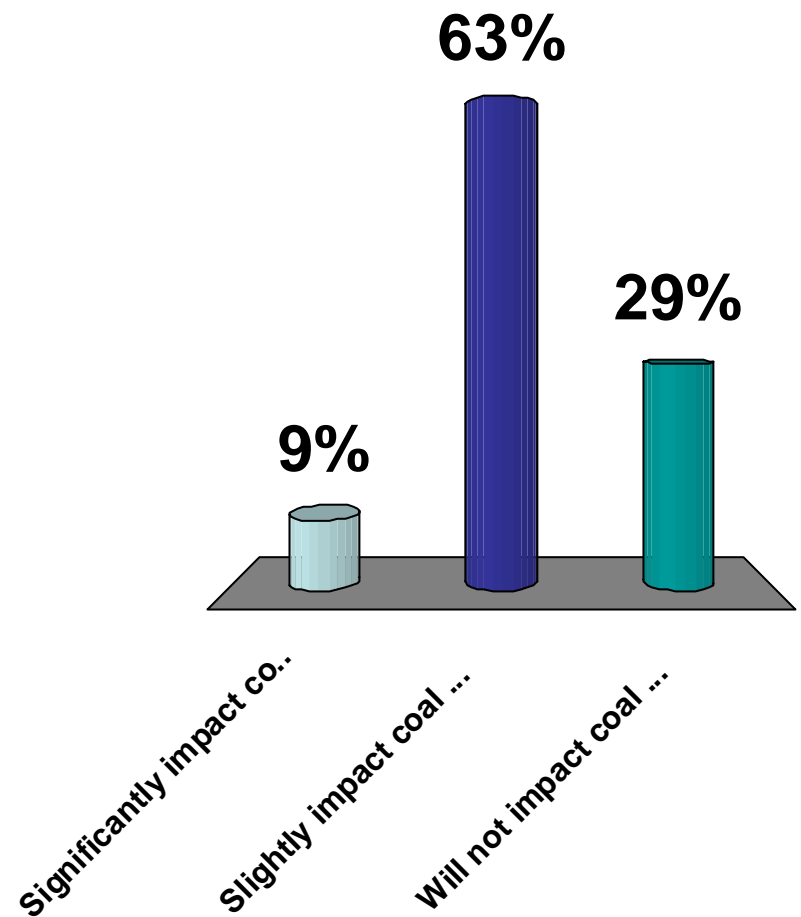
In 2008 scrubber installation and activation will:

1. Significantly impact coal source switching
2. Slightly impact coal source switching
3. Will not impact coal sourcing switching



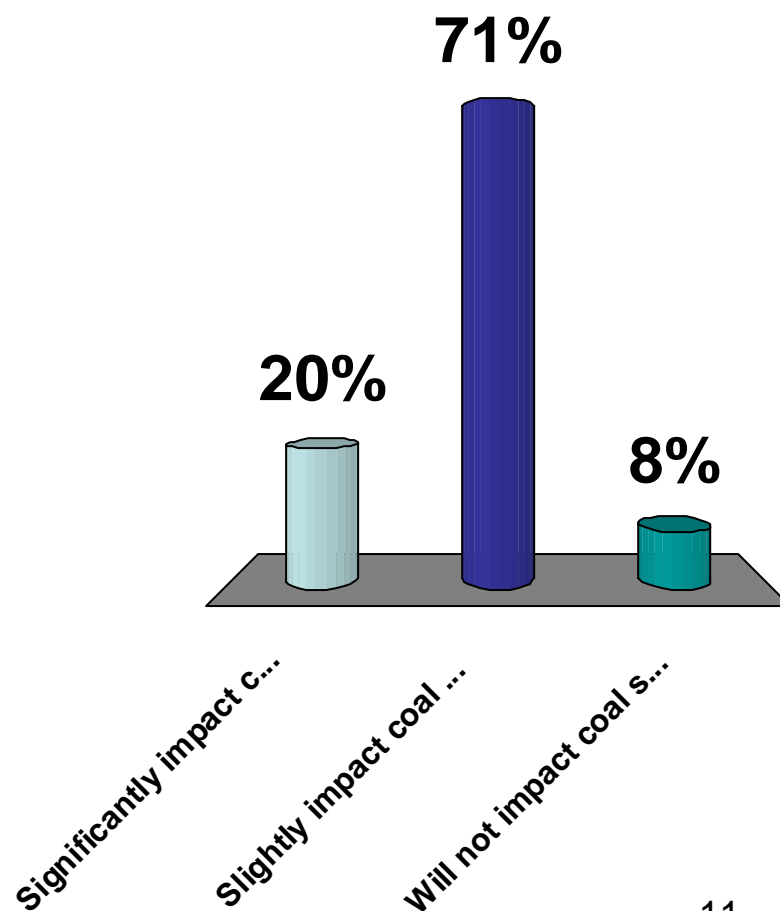
In 2008 scrubber installation and activation will:

1. Significantly impact coal source switching
2. Slightly impact coal source switching
3. Will not impact coal sourcing switching



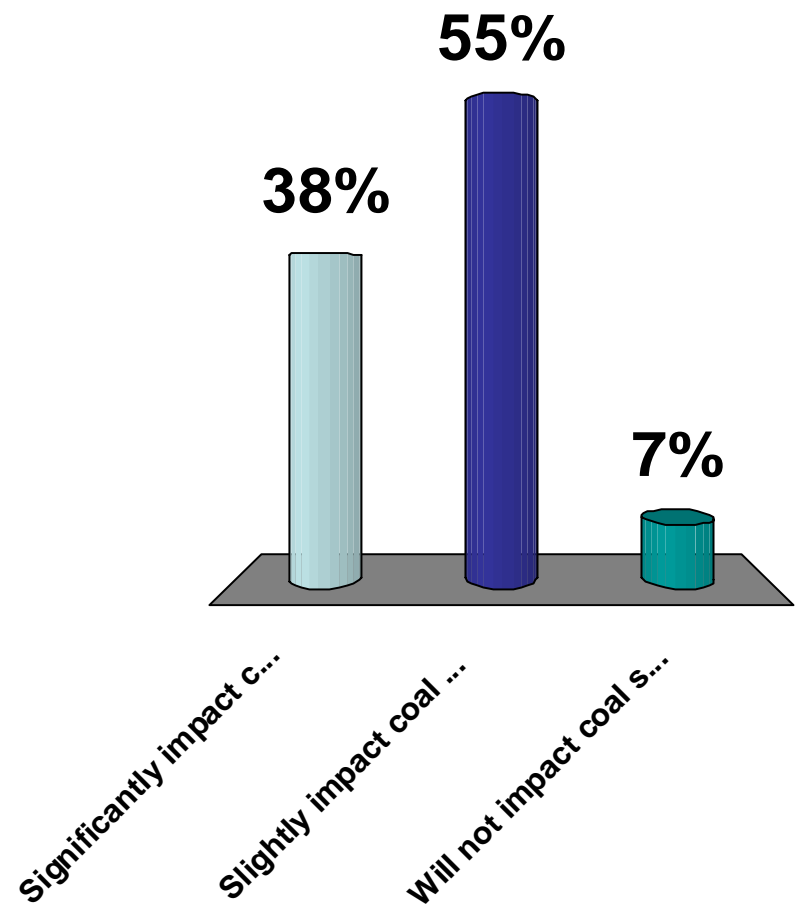
In 2009 and beyond scrubber installations will:

1. Significantly impact coal source switching
2. Slightly impact coal source switching
3. Will not impact coal sourcing



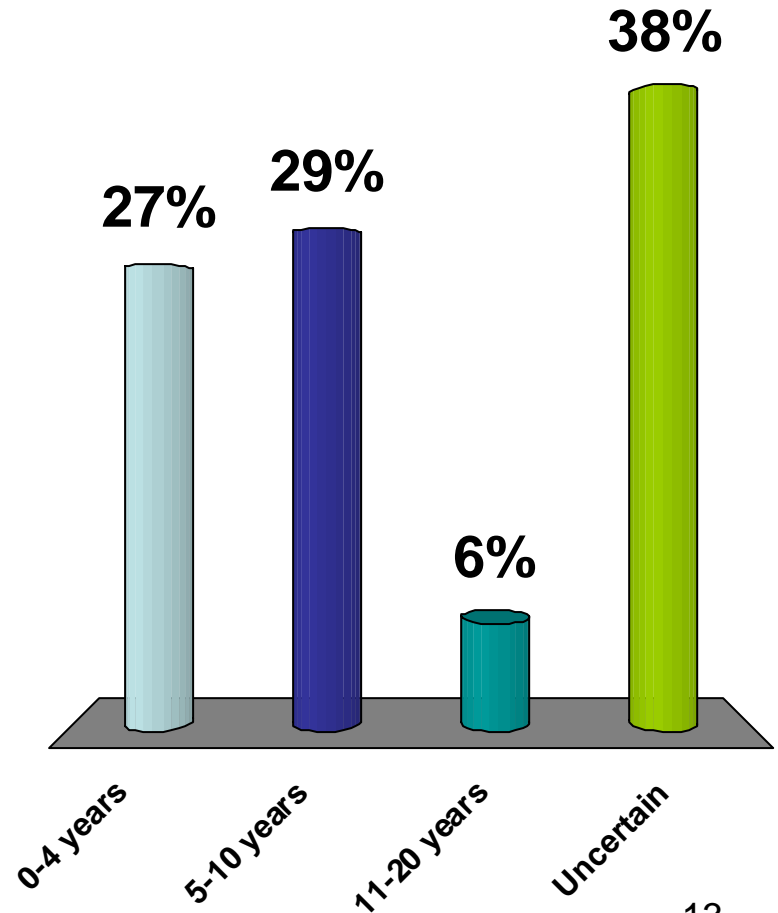
In 2009 and beyond scrubber installations will:

1. Significantly impact coal source switching
2. Slightly impact coal source switching
3. Will not impact coal sourcing



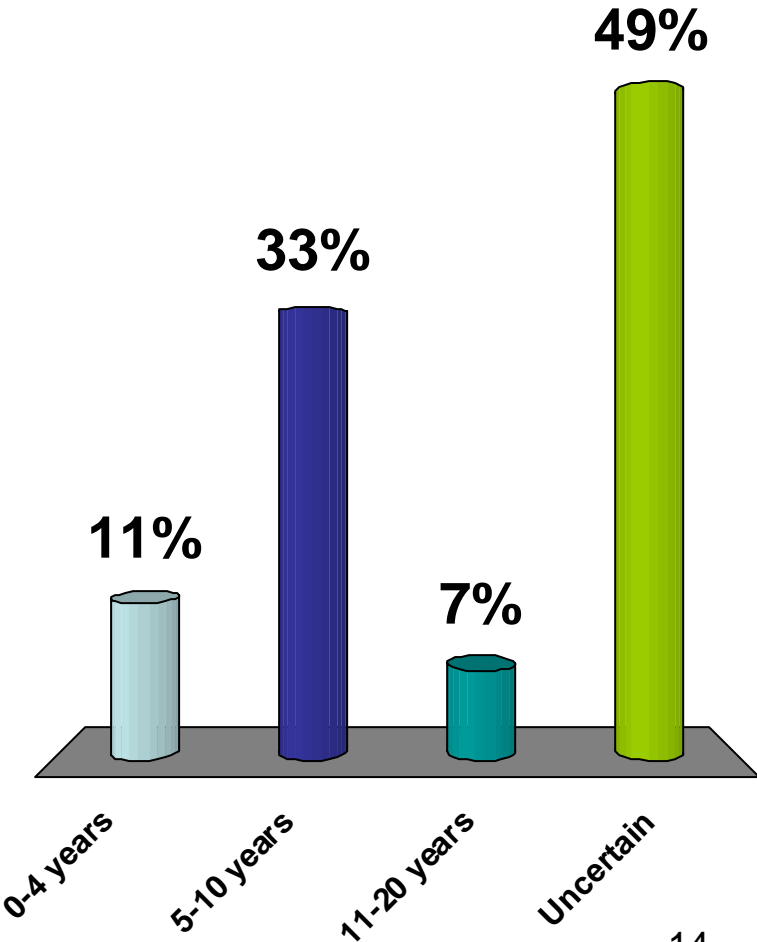
When will new coal reserves in Montana come on line:

1. 0-4 years
2. 5-10 years
3. 11-20 years
4. Uncertain



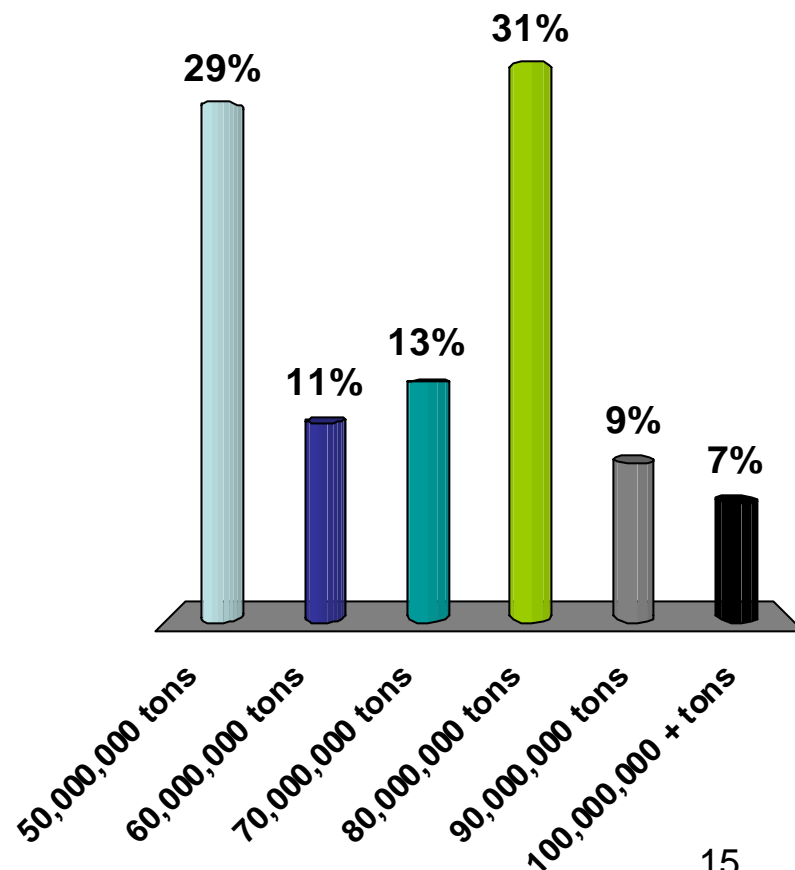
When will new coal reserves in Montana come on line:

- 1. 0-4 years
- 2. 5-10 years
- 3. 11-20 years
- 4. Uncertain



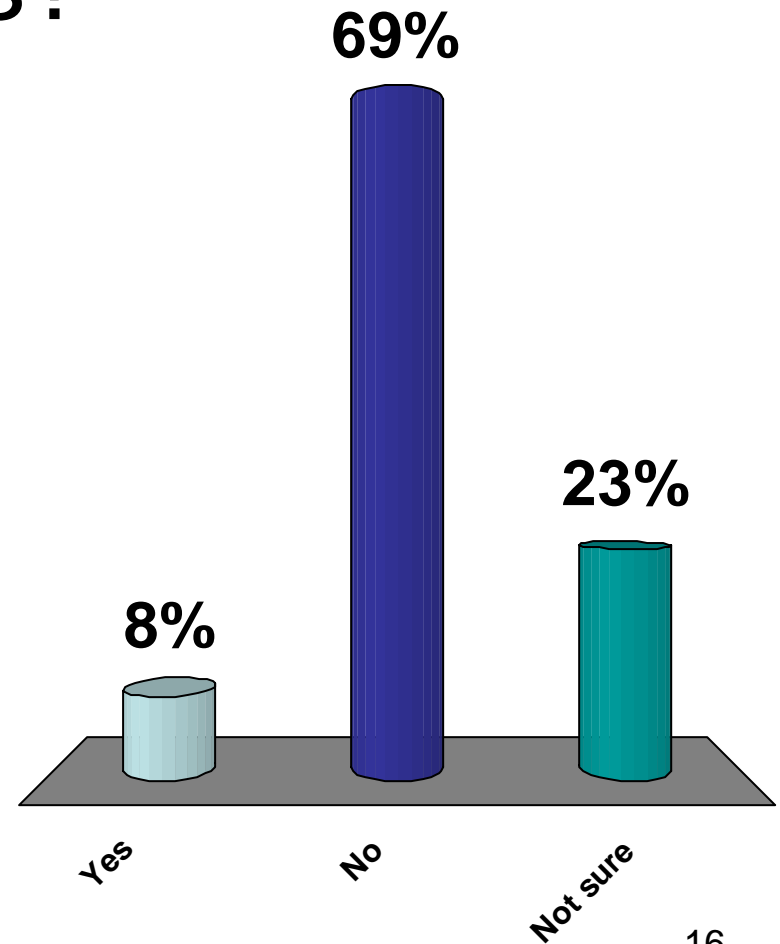
Approximately how much coal will be exported from the US in 2008:

1. 50,000,000 tons
2. 60,000,000 tons
3. 70,000,000 tons
4. 80,000,000 tons
5. 90,000,000 tons
6. 100,000,000 + tons



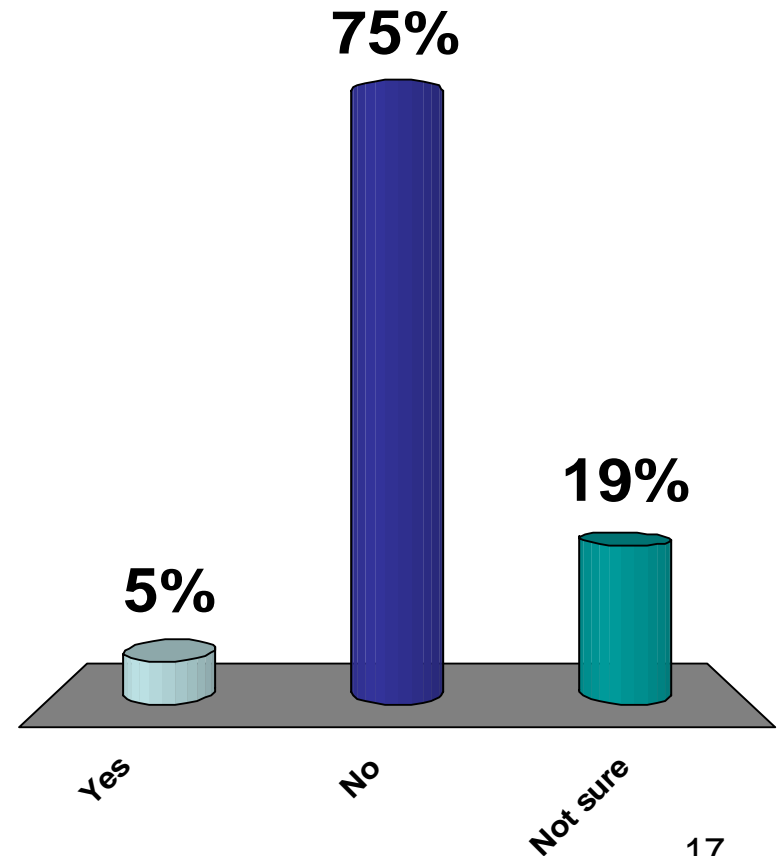
West Coast Port facilities are adequate to support significant Western coal exports?

1. Yes
2. No
3. Not sure



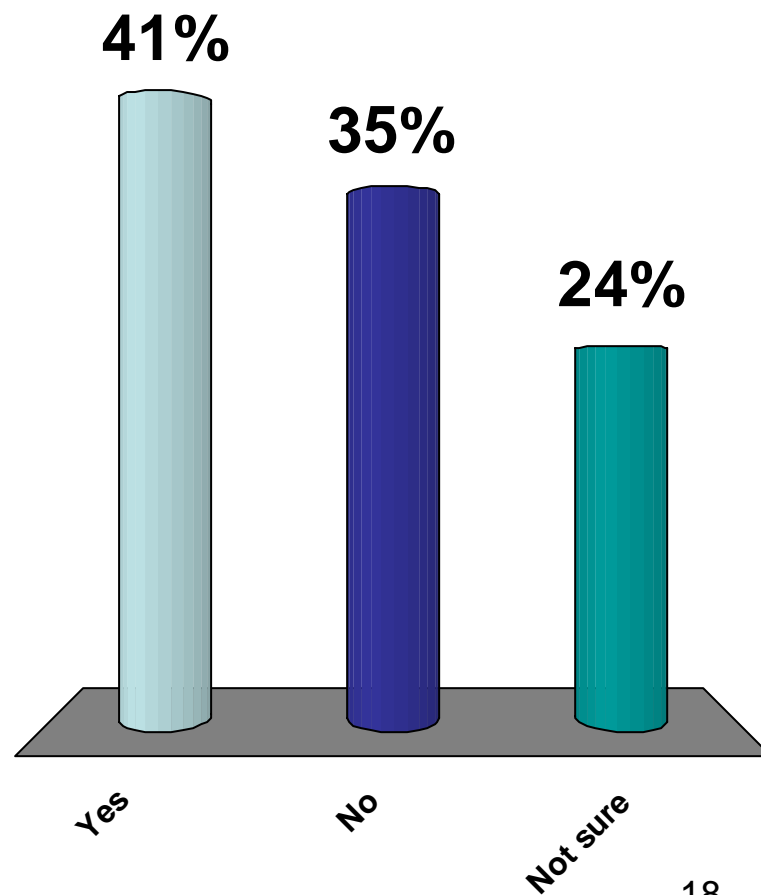
West Coast Port facilities are adequate to support significant Western coal exports?

1. Yes
2. No
3. Not sure



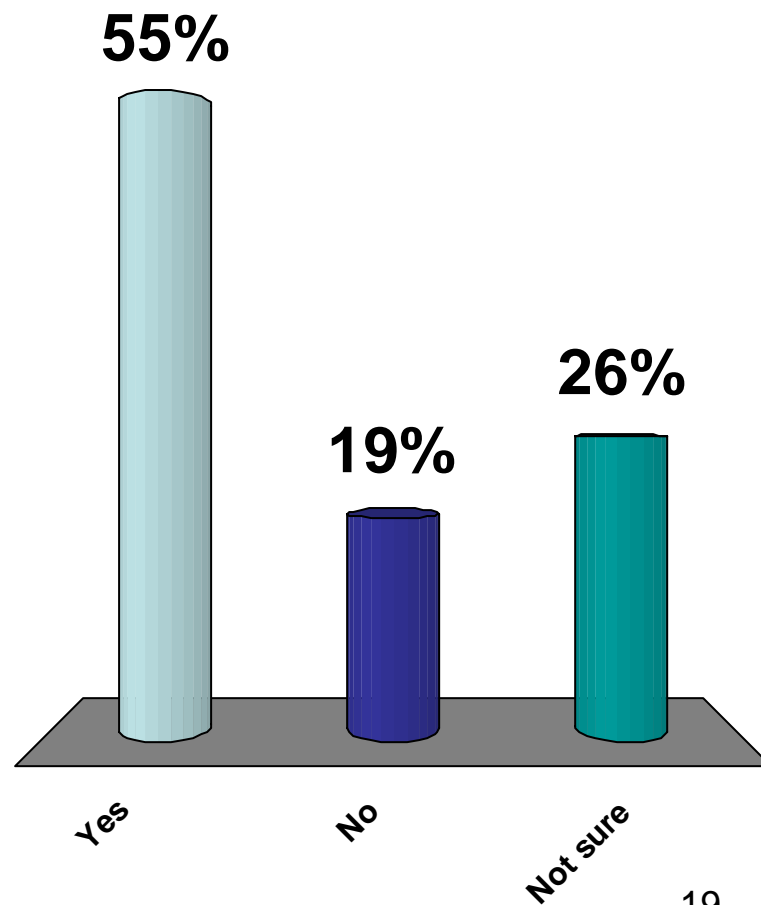
Gulf Port facilities are adequate to support significant coal exports?

1. Yes
2. No
3. Not sure



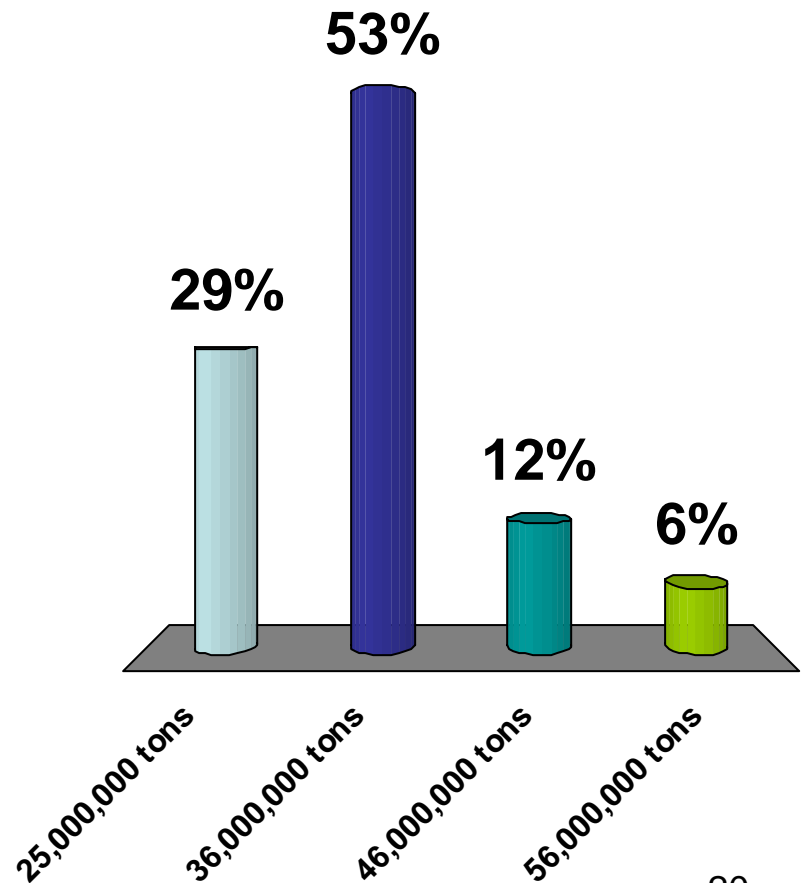
Gulf Port facilities are adequate to support significant coal exports?

1. Yes
2. No
3. Not sure



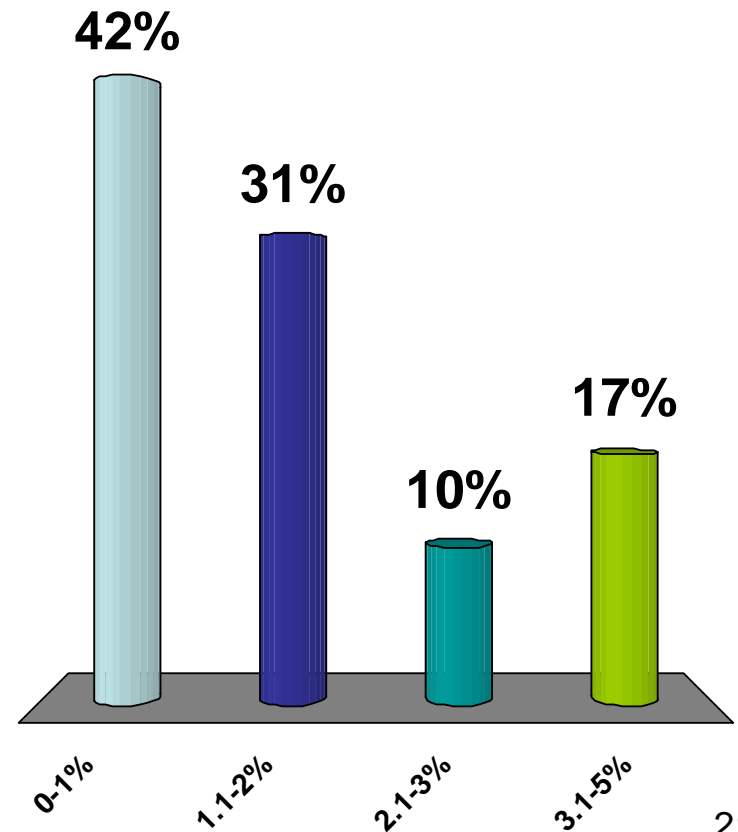
Approximately how much coal was imported to the US in 2007:

1. 25,000,000 tons
2. 36,000,000 tons
3. 46,000,000 tons
4. 56,000,000 tons



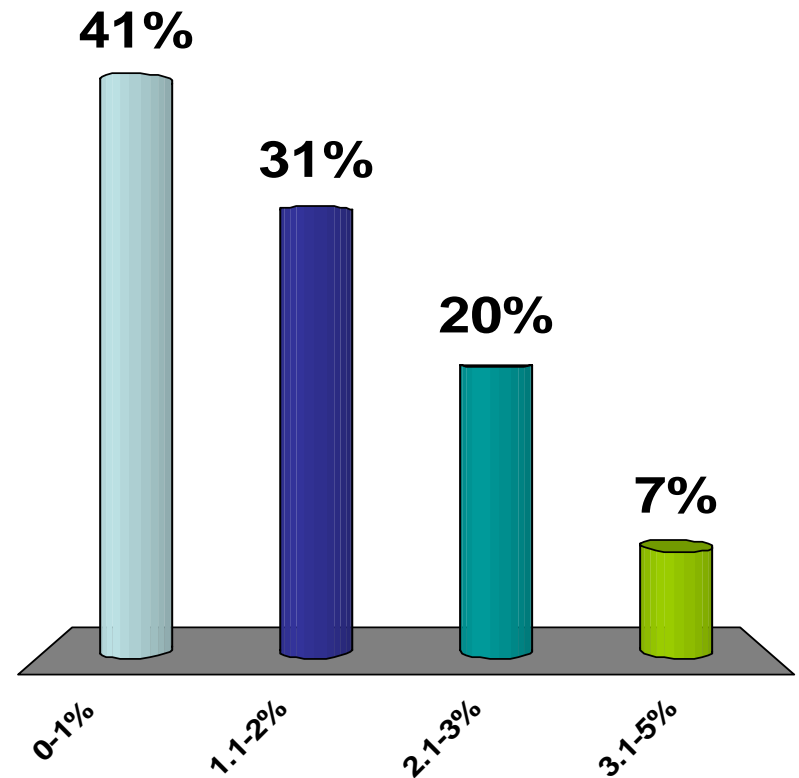
By what percentage will 2008 export/import coal market activity impact western coal:

1. 0-1%
2. 1.1-2%
3. 2.1-3%
4. 3.1-5%



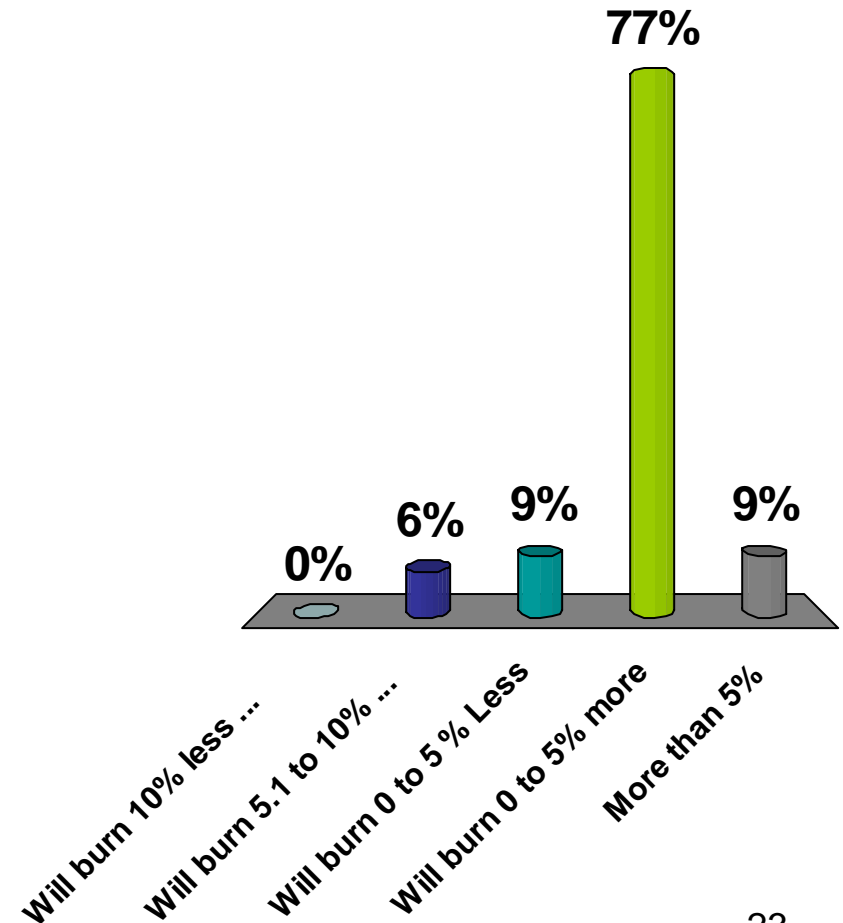
By what percentage will 2008 export/import coal market activity impact western coal:

1. 0-1%
2. 1.1-2%
3. 2.1-3%
4. 3.1-5%



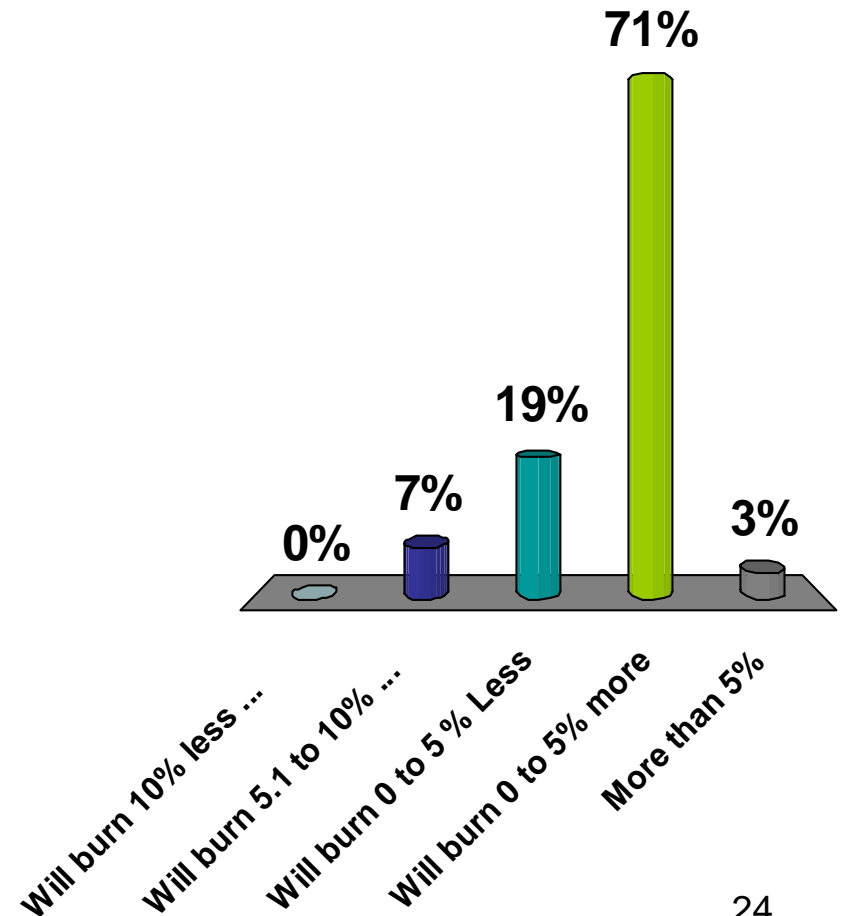
In 2008 power companies east of the Mississippi:

1. Will burn 10% less PRB coal
2. Will burn 5.1 to 10% less PRB coal
3. Will burn 0 to 5 % Less
4. Will burn 0 to 5% more
5. More than 5%



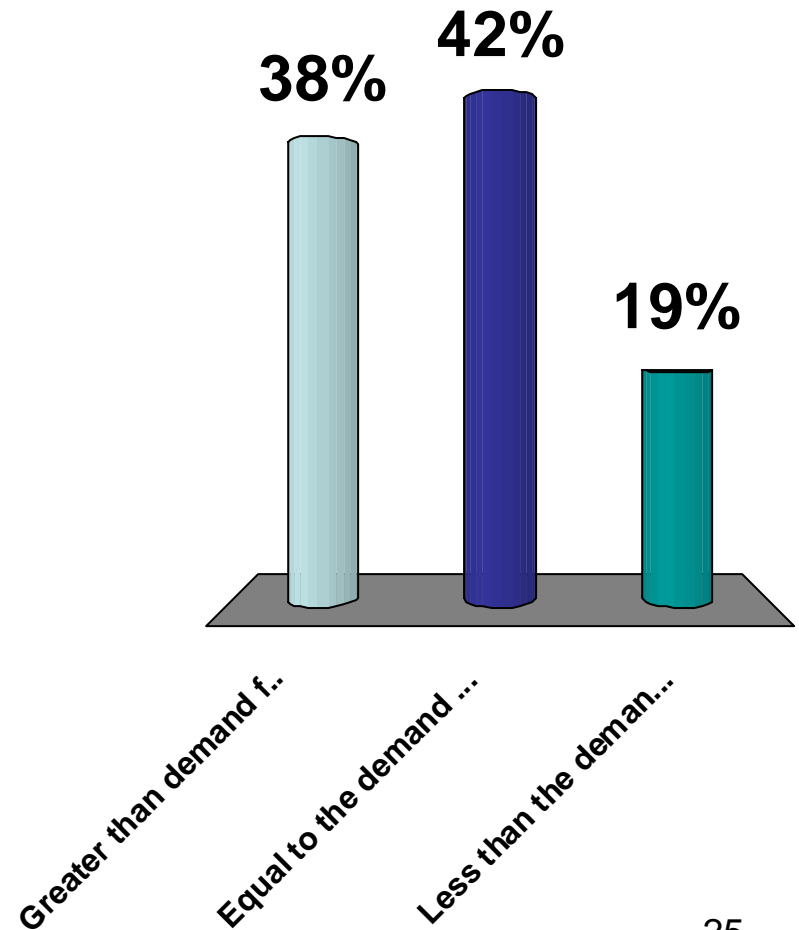
In 2008 power companies east of the Mississippi:

1. Will burn 10% less PRB coal
2. Will burn 5.1 to 10% less PRB coal
3. Will burn 0 to 5 % Less
4. Will burn 0 to 5% more
5. More than 5%



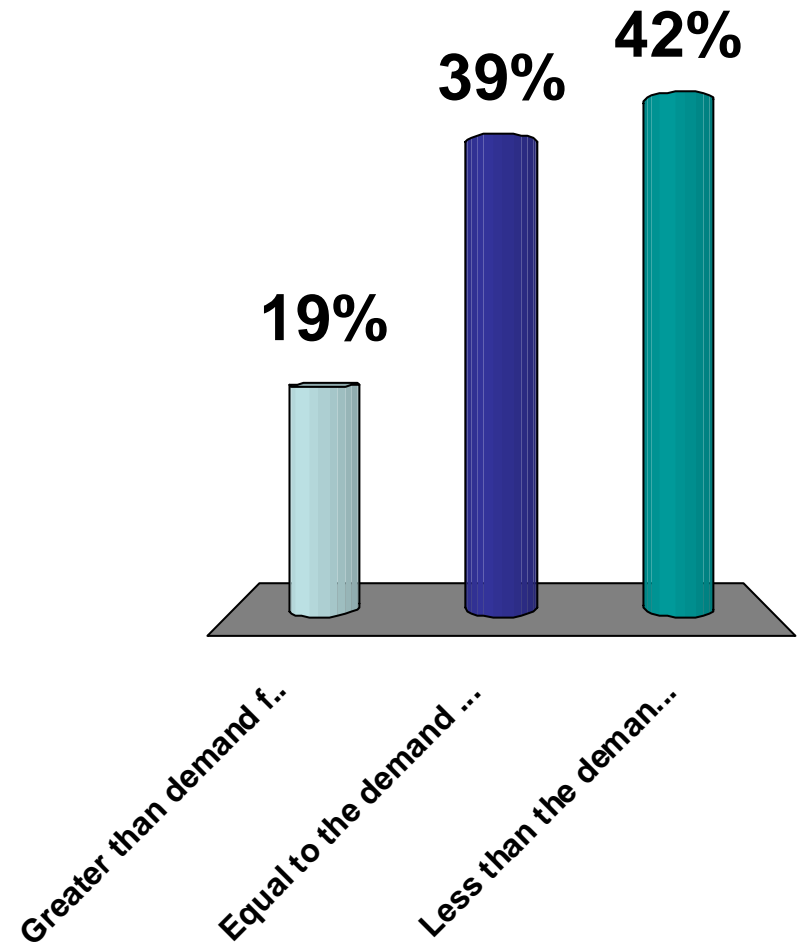
Do you think that railroad capacity is:

1. Greater than demand for coal
2. Equal to the demand for coal
3. Less than the demand for coal



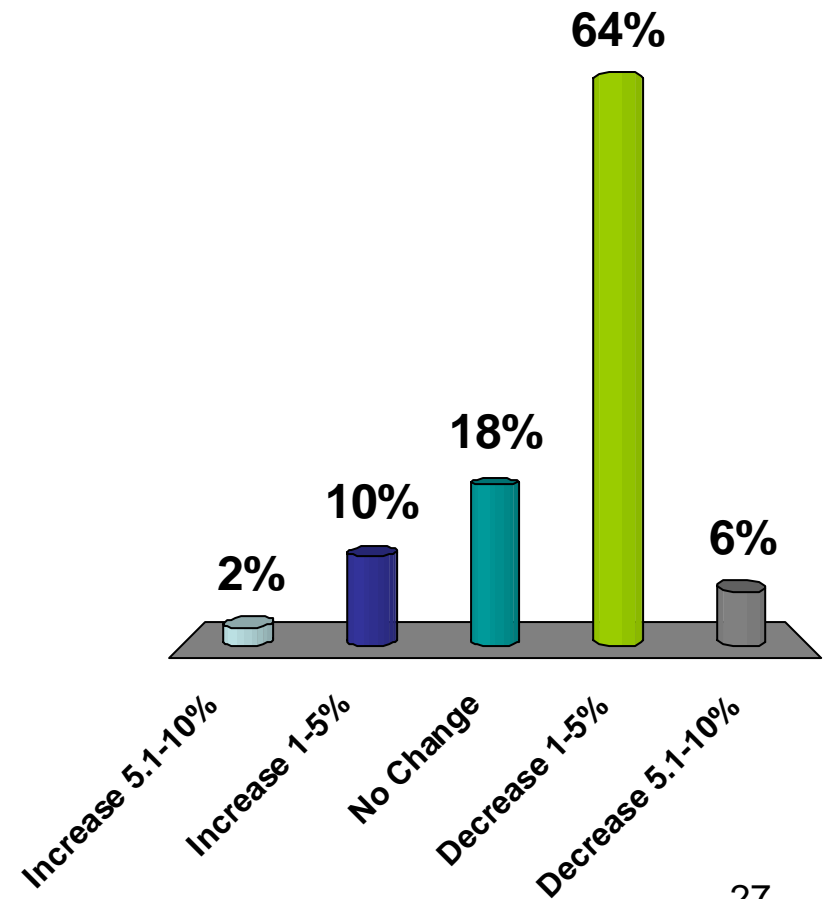
Do you think that railroad capacity is:

1. Greater than demand for coal
2. Equal to the demand for coal
3. Less than the demand for coal



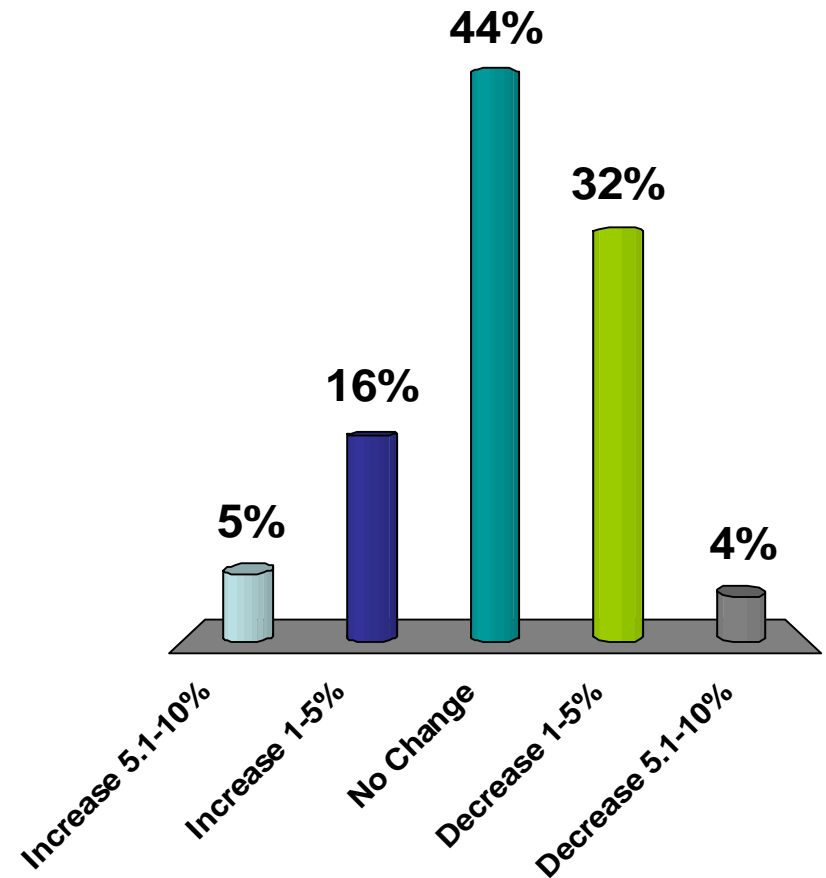
Do you believe your cycle times will _____ in 2008:

1. Increase 5.1-10%
2. Increase 1-5%
3. No Change
4. Decrease 1-5%
5. Decrease 5.1-10%



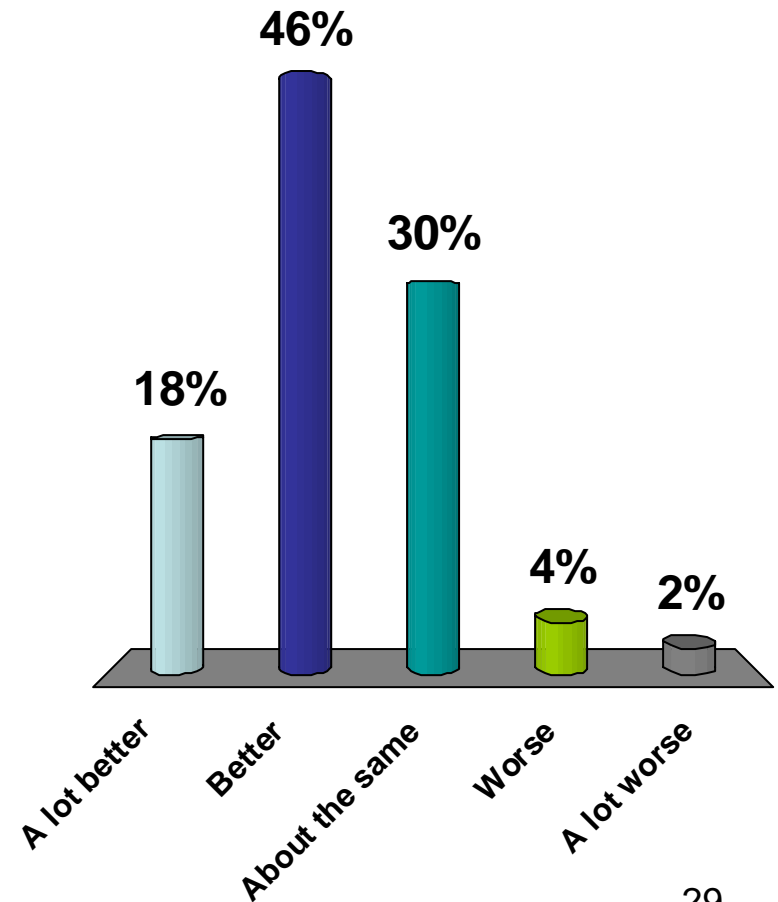
Do you believe your cycle times will _____ in 2008:

1. Increase 5.1-10%
2. Increase 1-5%
3. No Change
4. Decrease 1-5%
5. Decrease 5.1-10%



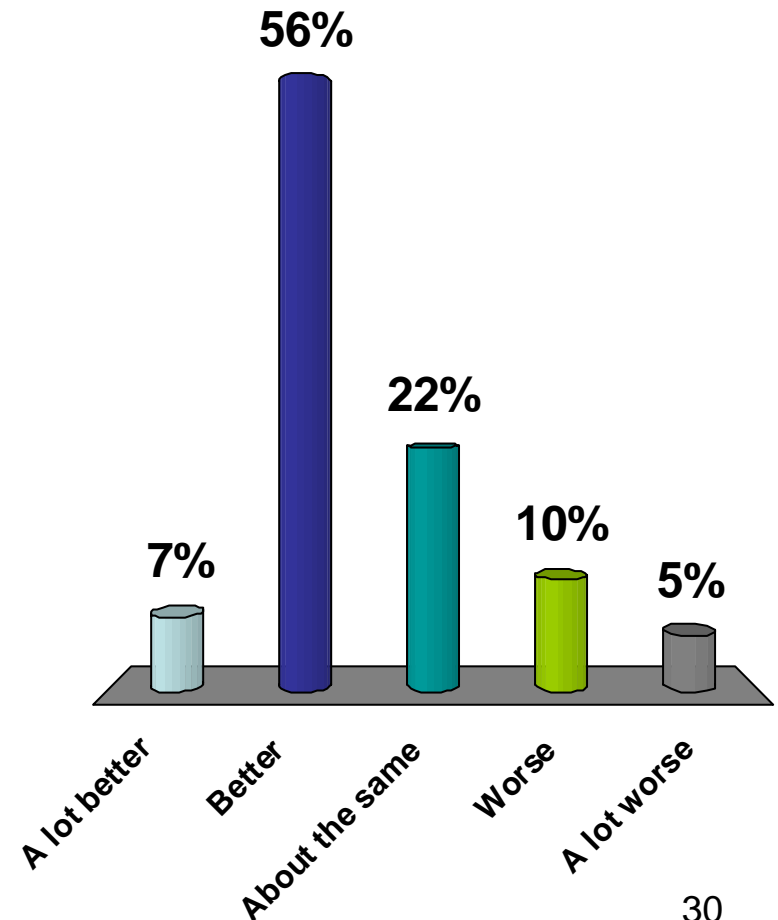
In comparison to 2007 railroad service in 2008 is:

1. A lot better
2. Better
3. About the same
4. Worse
5. A lot worse



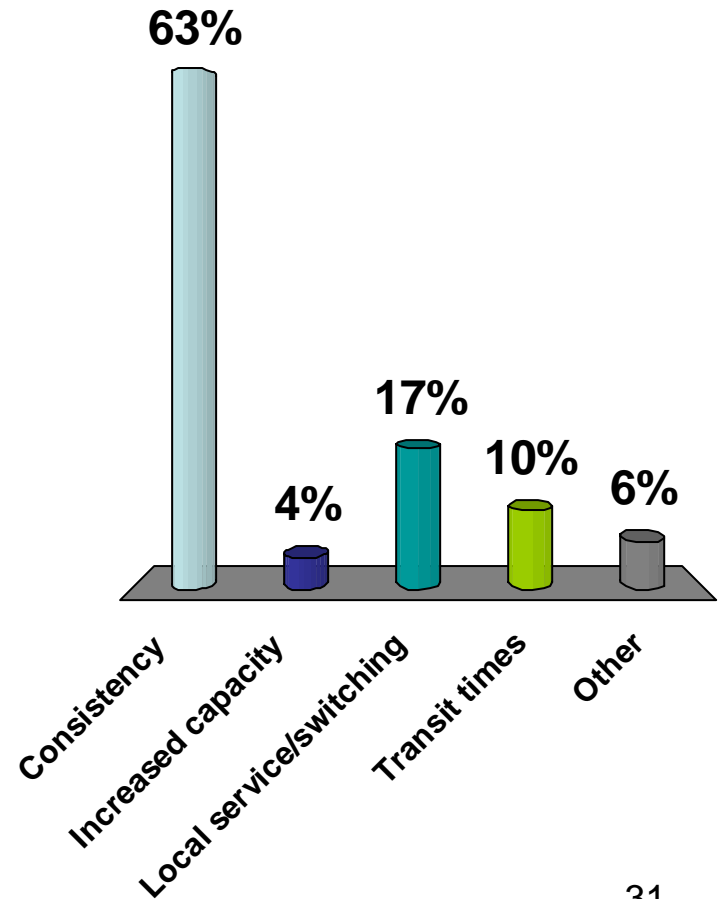
In comparison to 2006 railroad service in 2007 was:

1. A lot better
2. Better
3. About the same
4. Worse
5. A lot worse



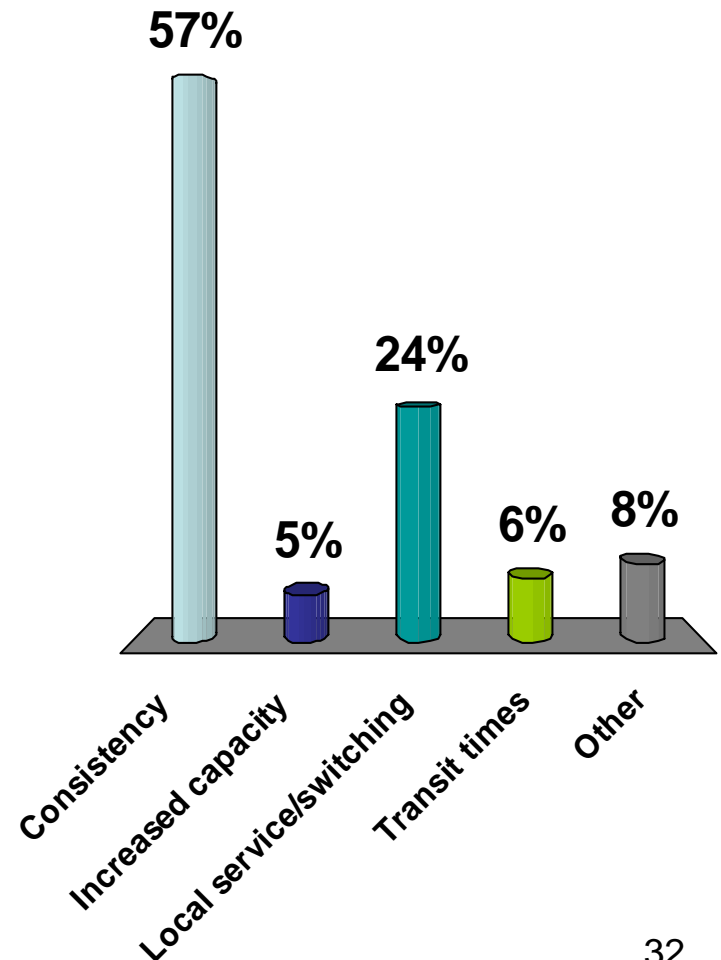
The single service focused thing that railroads could improve on is:

1. Consistency
2. Increased capacity
3. Local service/switching
4. Transit times
5. Other



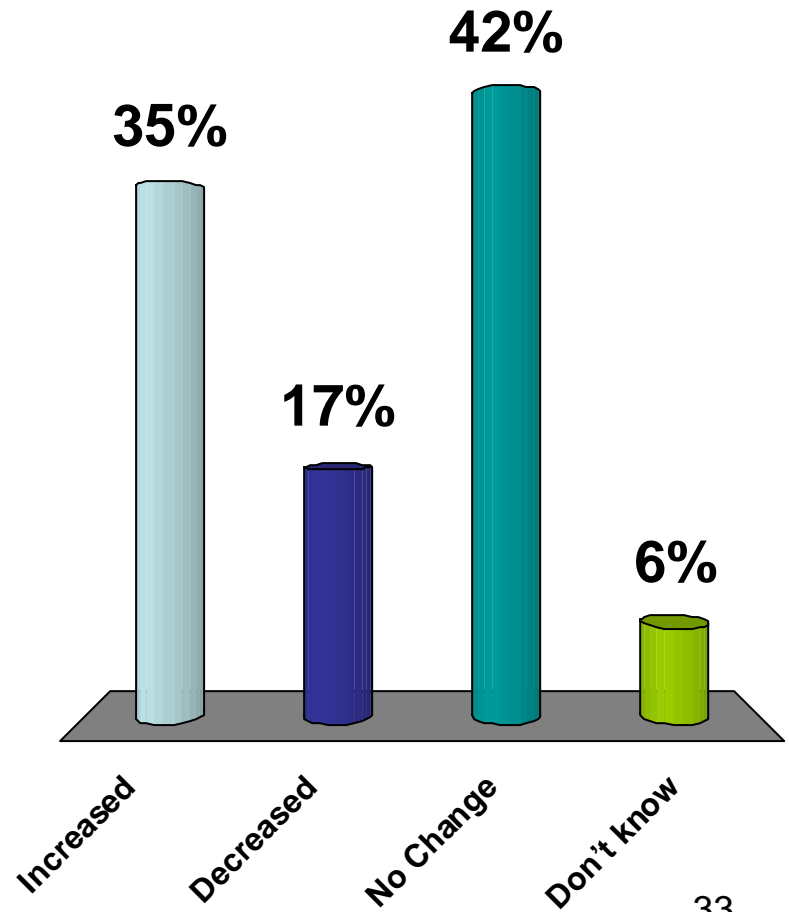
The single service focused thing that railroads could improve on is:

1. Consistency
2. Increased capacity
3. Local service/switching
4. Transit times
5. Other



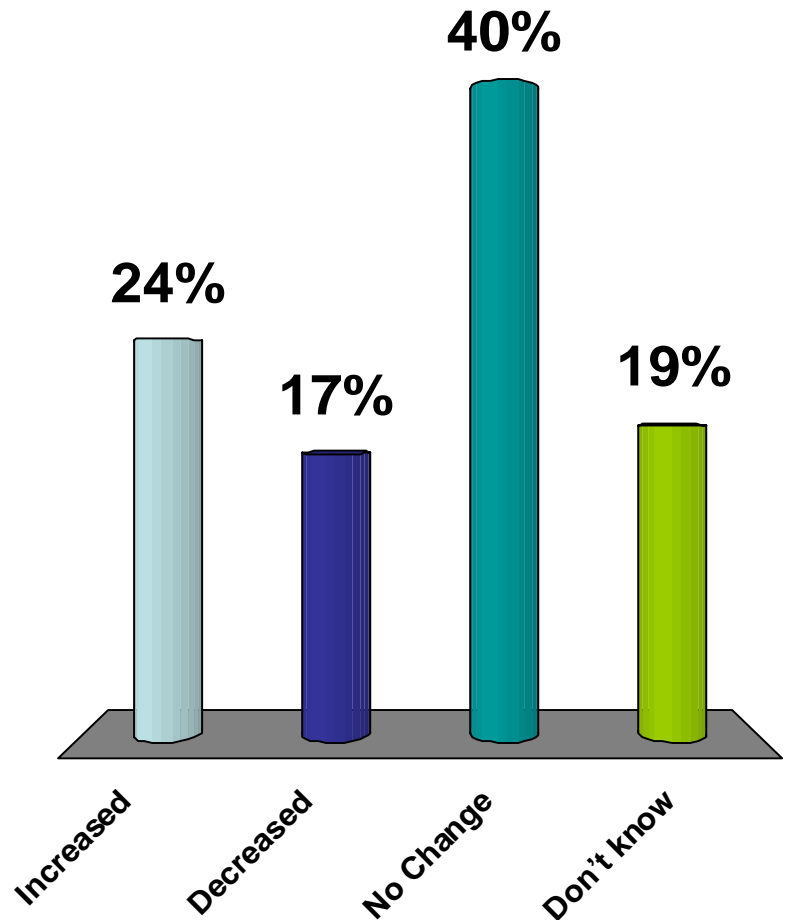
In 2008 unloading times at the destination:

1. Increased
2. Decreased
3. No Change
4. Don't know



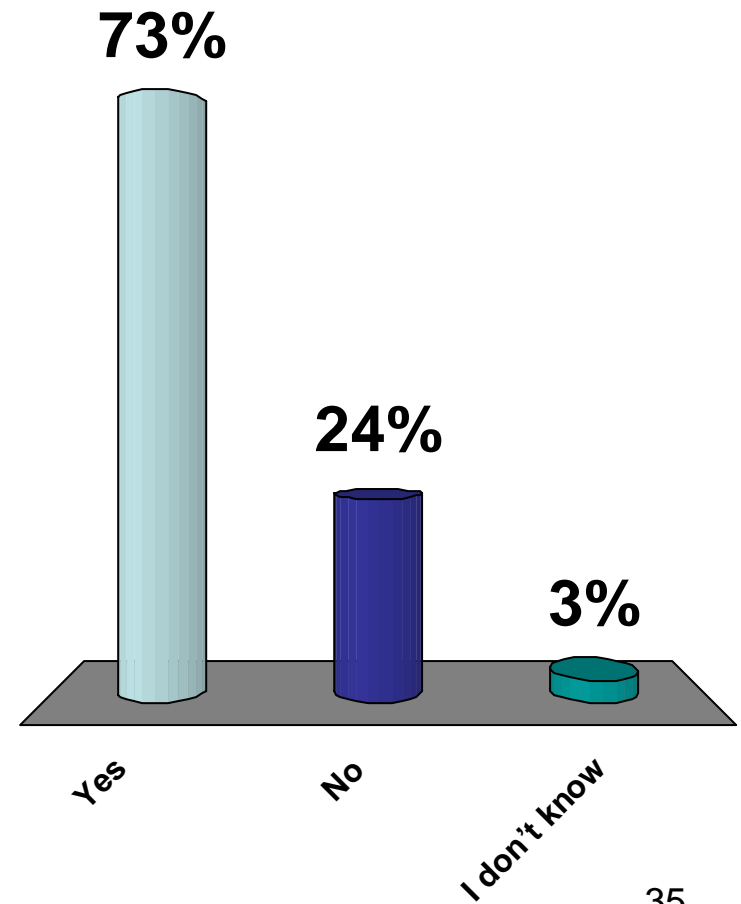
In 2007 unloading times at the destination:

1. Increased
2. Decreased
3. No Change
4. Don't know



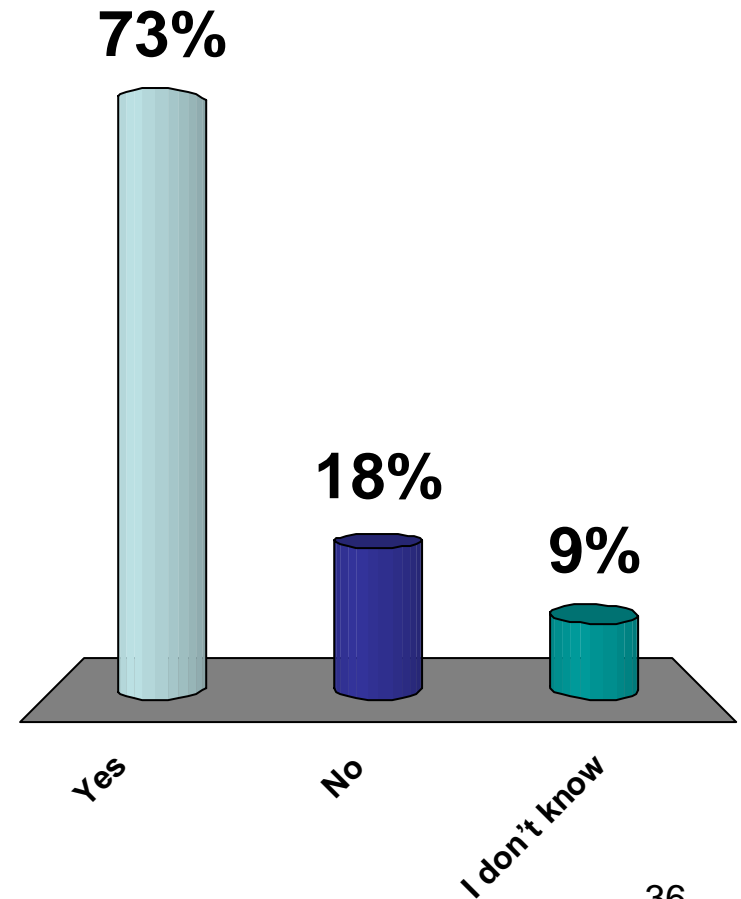
Does your company put an emphasis on optimizing unloading time?

1. Yes
2. No
3. I don't know



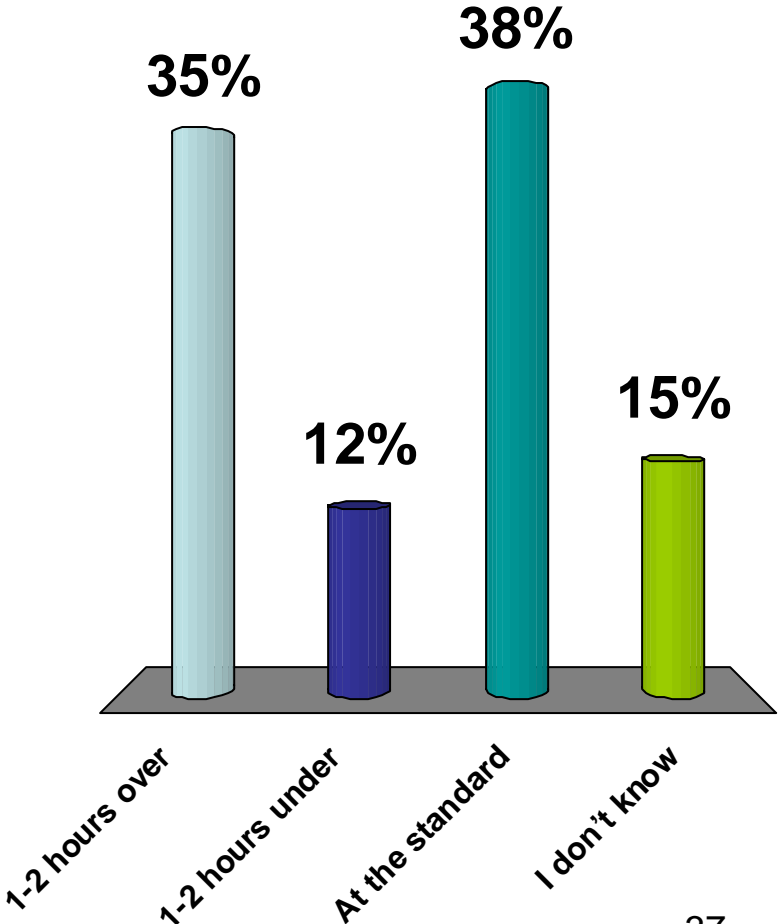
Does your company put an emphasis on optimizing unloading time?

1. Yes
2. No
3. I don't know



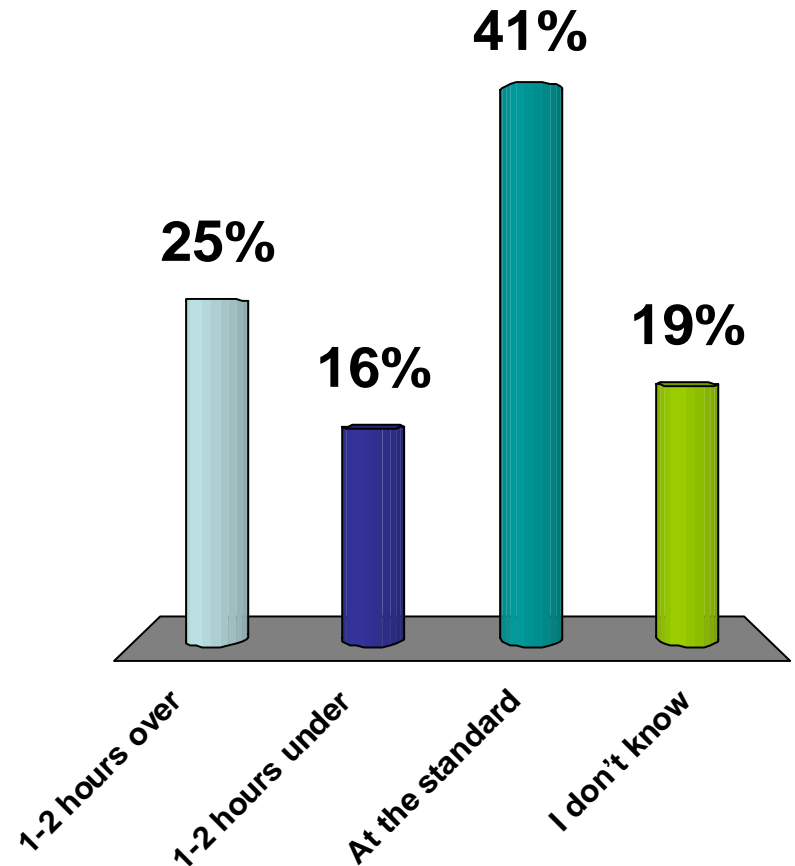
Is your unloading time ____ the unloading standard?

- 1. 1-2 hours over
- 2. 1-2 hours under
- 3. At the standard
- 4. I don't know



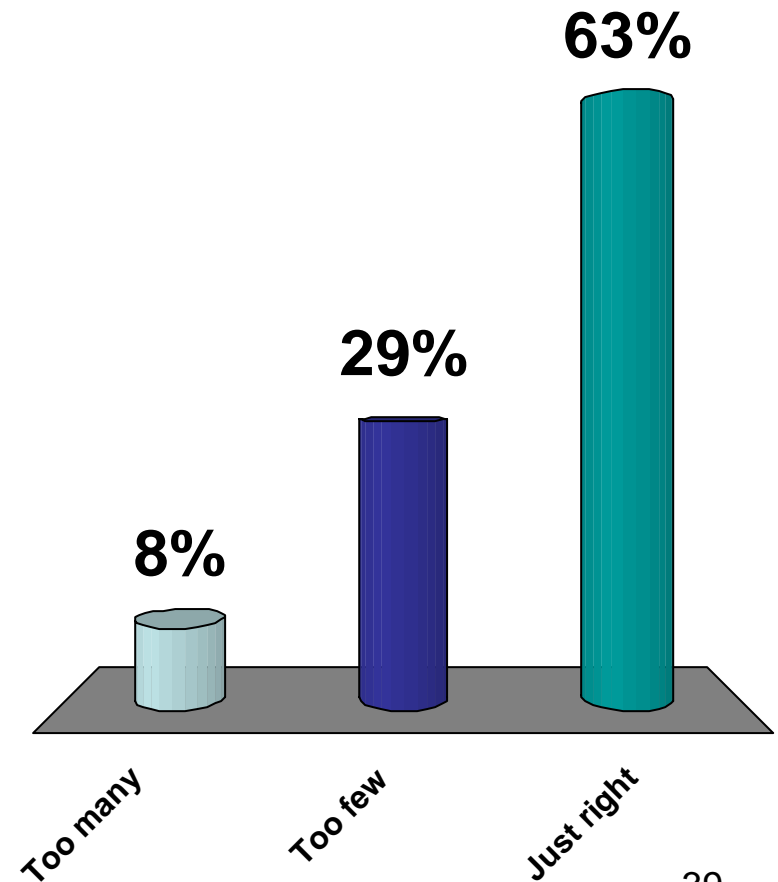
Is your unloading time ____ the unloading standard?

1. 1-2 hours over
2. 1-2 hours under
3. At the standard
4. I don't know



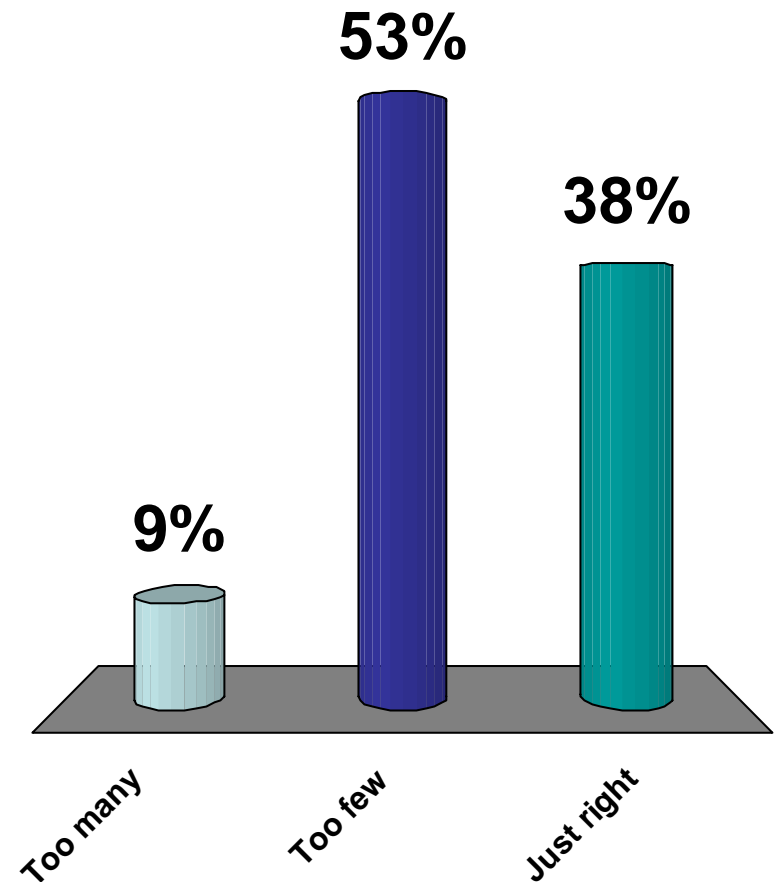
The number of train sets running in the SPRB is:

1. Too many
2. Too few
3. Just right



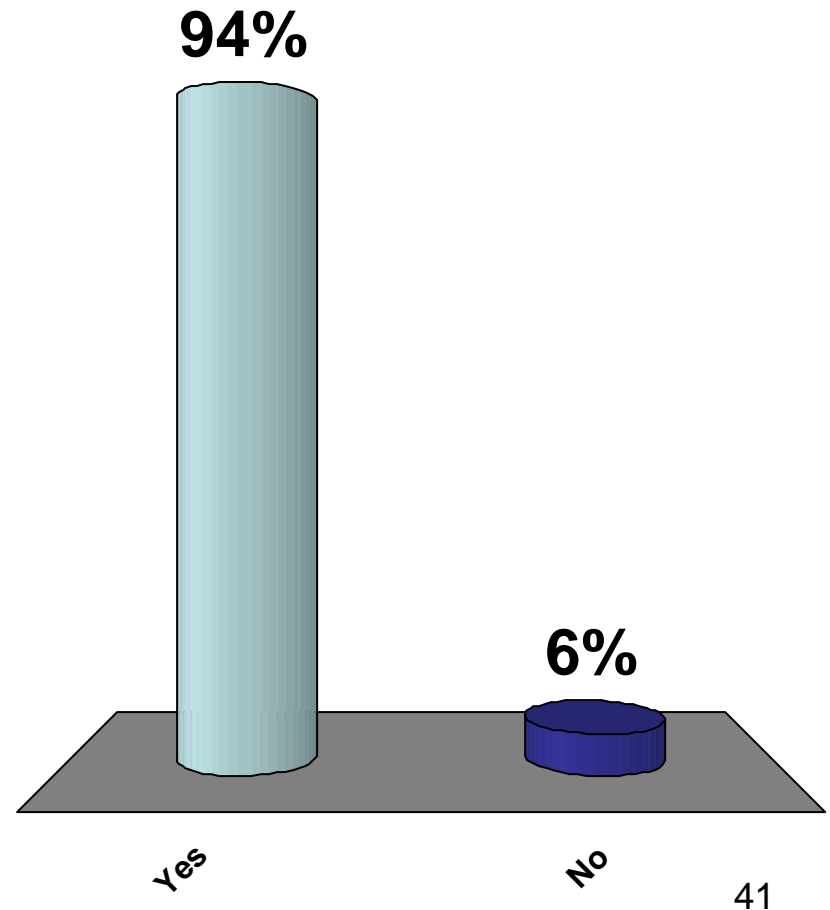
The number of train sets running in the SPRB is:

1. Too many
2. Too few
3. Just right



Was this an effective way to communicate:

1. Yes
2. No



Was this an effective way to communicate:

1. Yes
2. No

