

NCTA Logistics & Planning Committee

Hilton DFW Lakes
Executive Conference Center
Dallas, Texas



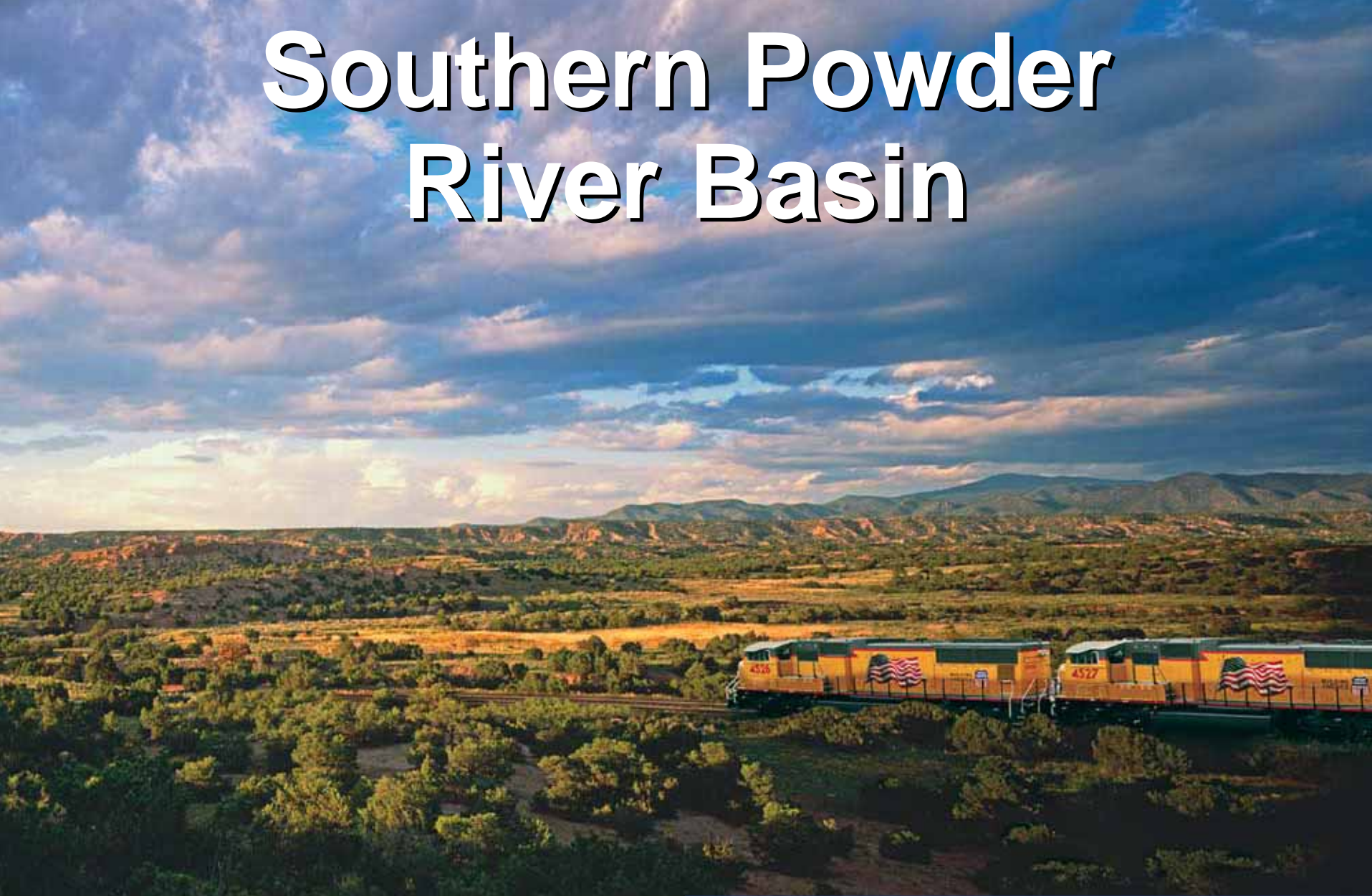
February 20, 2008

Andy Schroder

BUILDING AMERICA[®]



Southern Powder River Basin

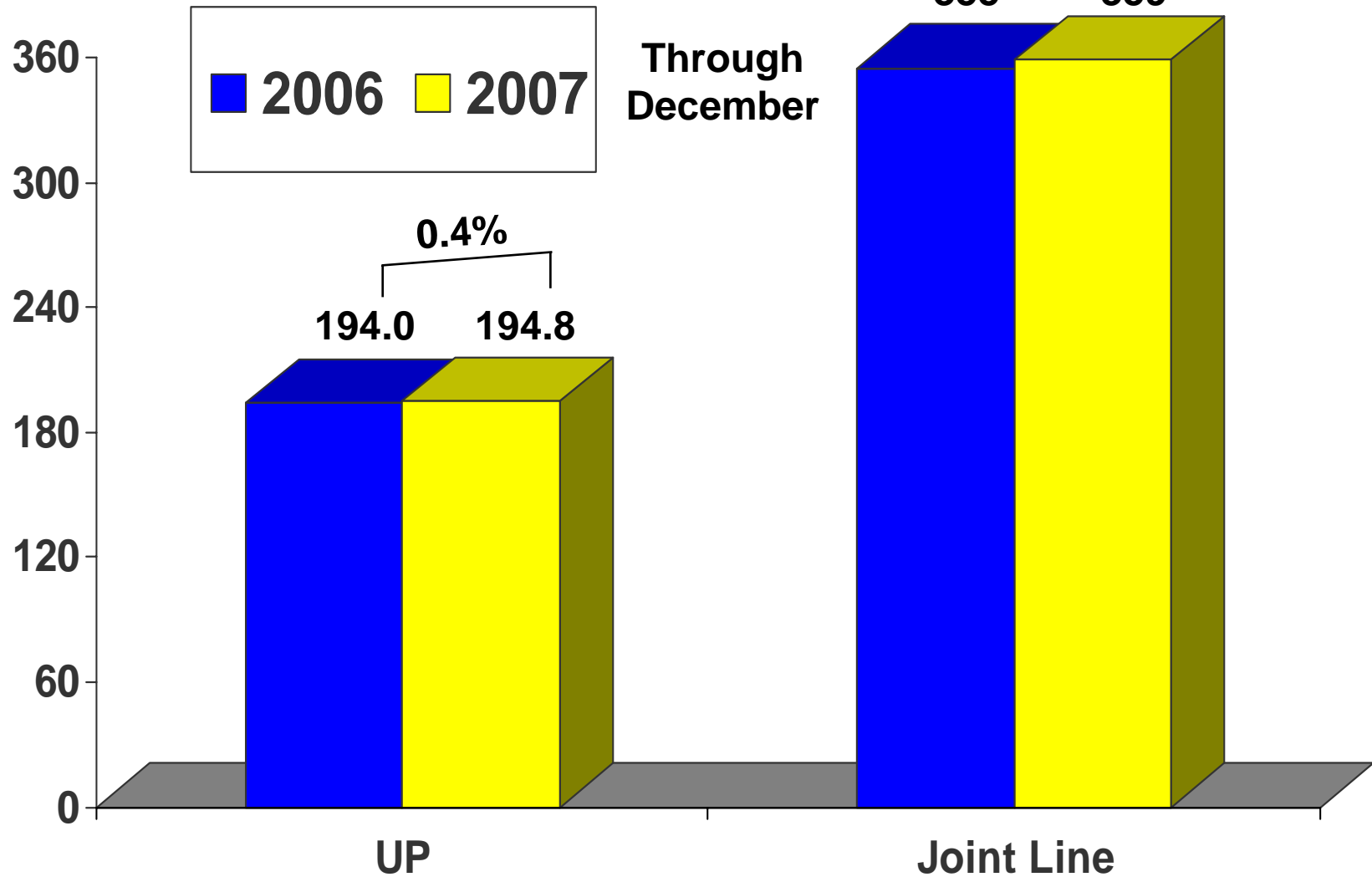


BUILDING AMERICA®



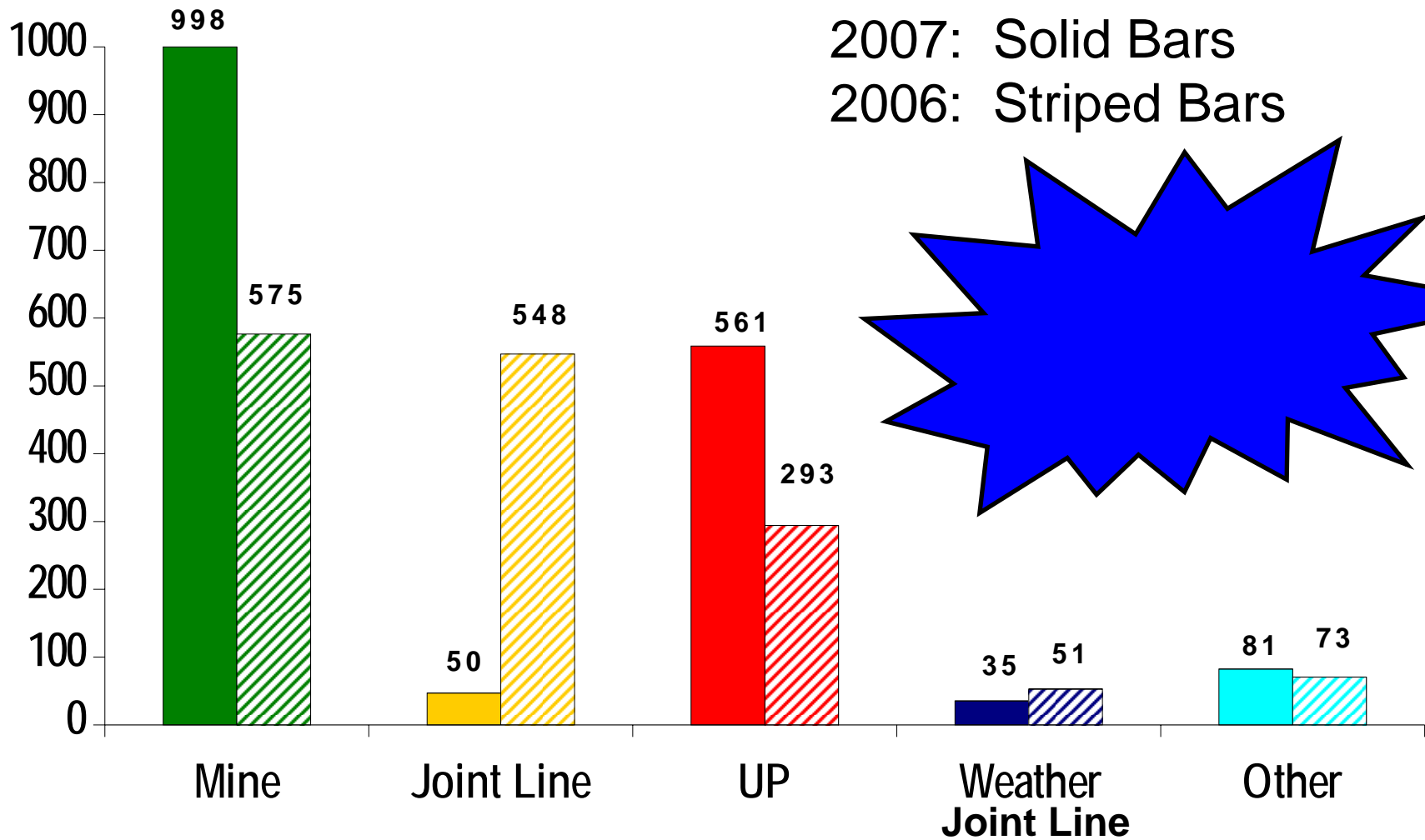
SPRB Year-to-Date Growth

Tons Loaded in Millions



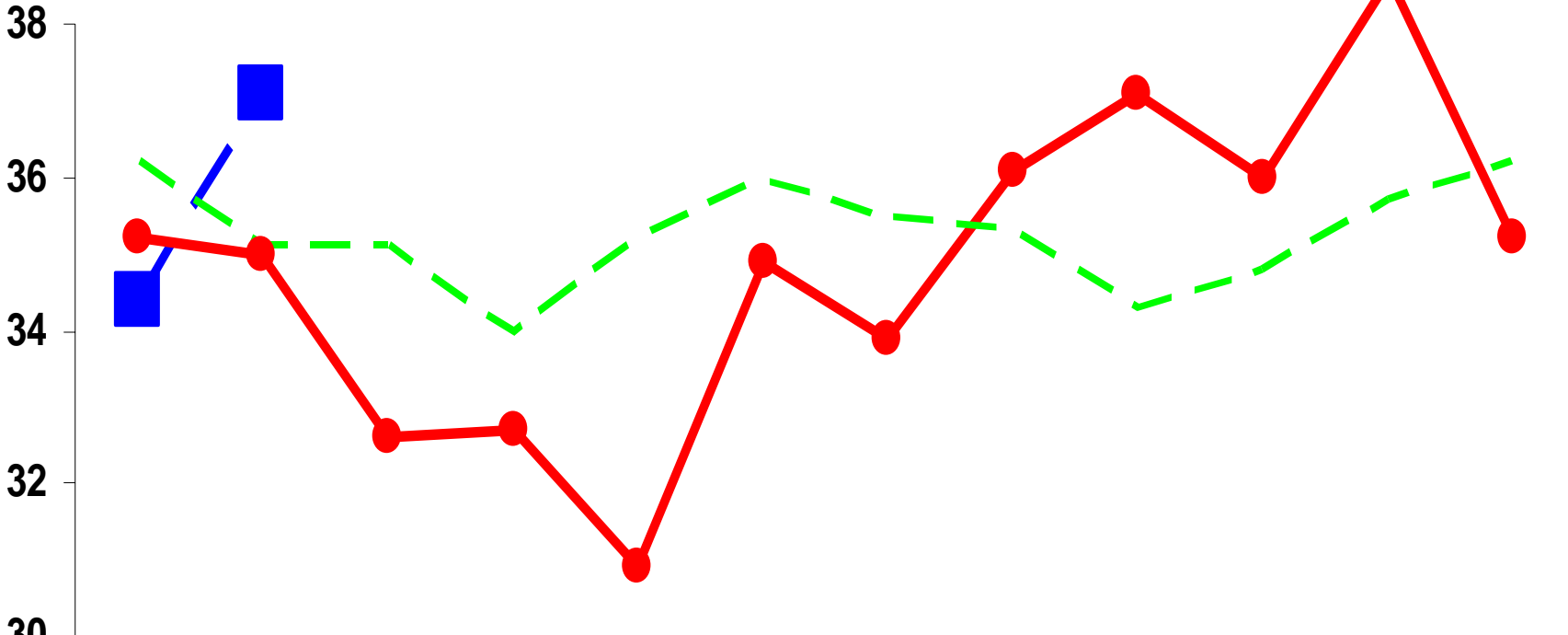
SPRB Missed Loading Opportunities

2007 vs 2006 (YTD December 31)



UPRR Coal Operations - SPRB

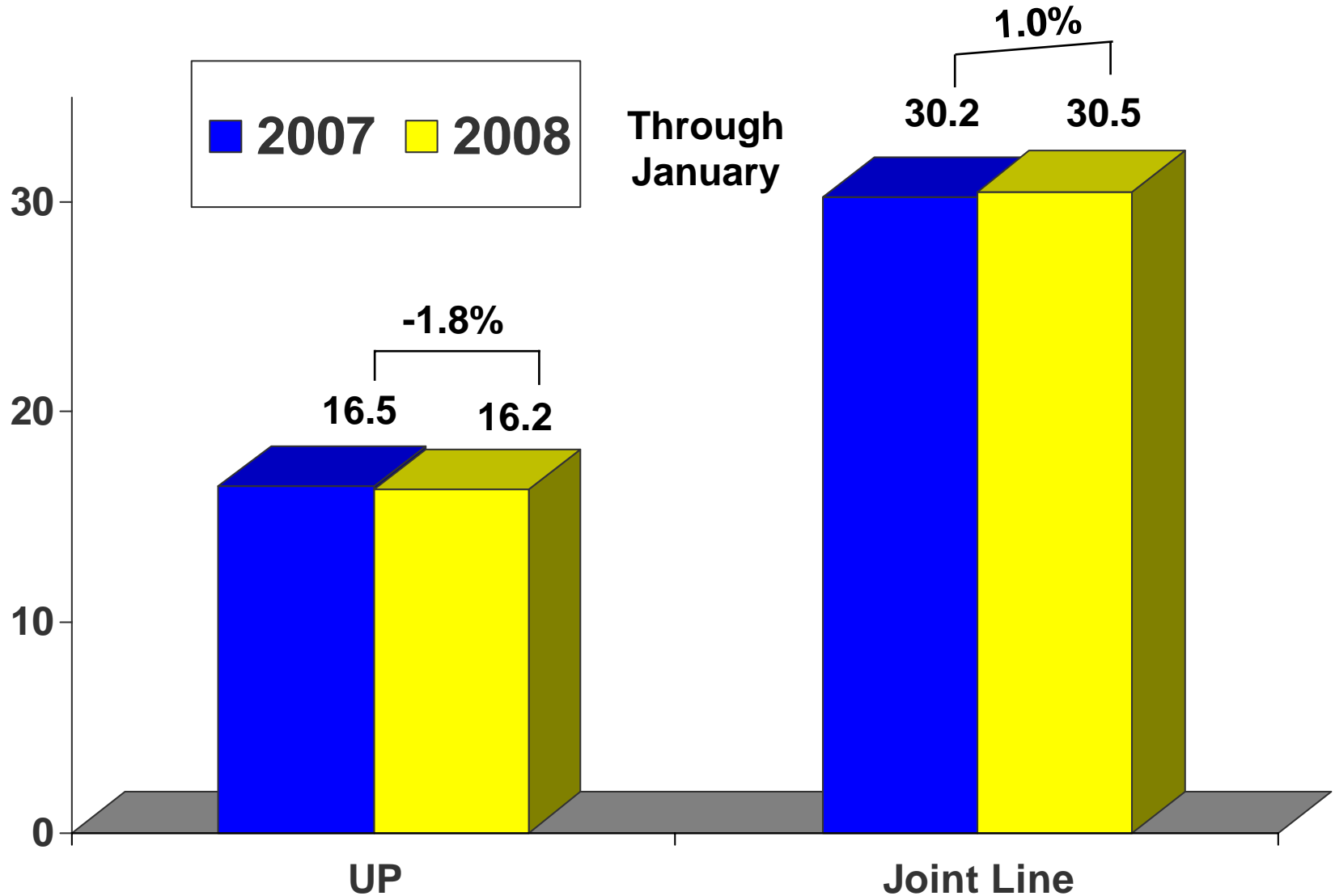
Average Daily Loadings 2006 - 2008



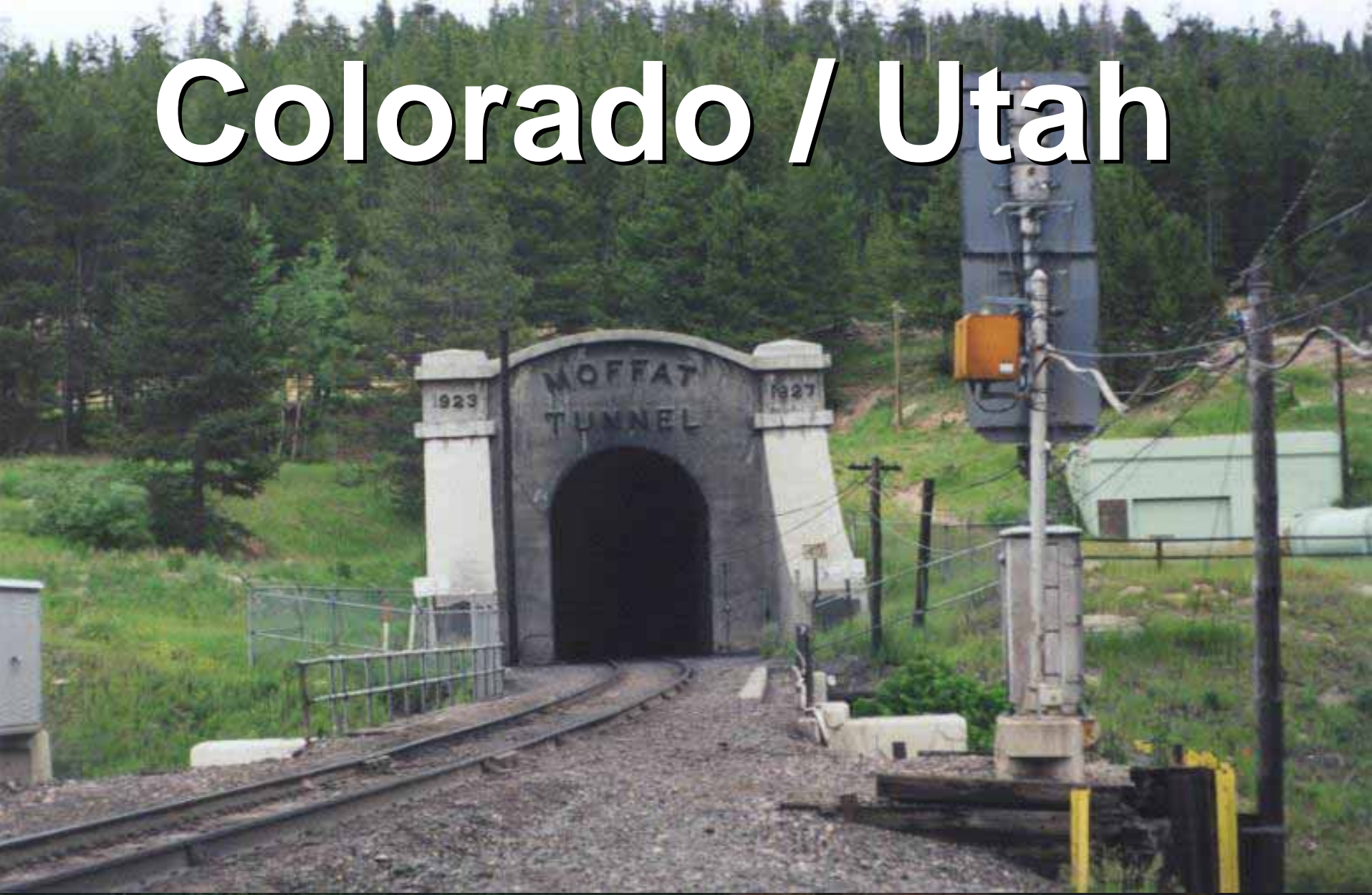
	Jan	Feb	Mar	Apr	May	Jun	Jul	Aug	Sep	Oct	Nov	Dec
2008	34.4	37.1										
2007	35.2	35.0	32.6	32.7	30.9	34.9	33.9	36.1	37.1	36.0	38.6	35.2
2006	36.2	35.1	35.1	34.0	35.2	36.0	35.5	35.3	34.3	34.8	35.7	36.2

SPRB Year-to-Date Growth

Tons Loaded in Millions

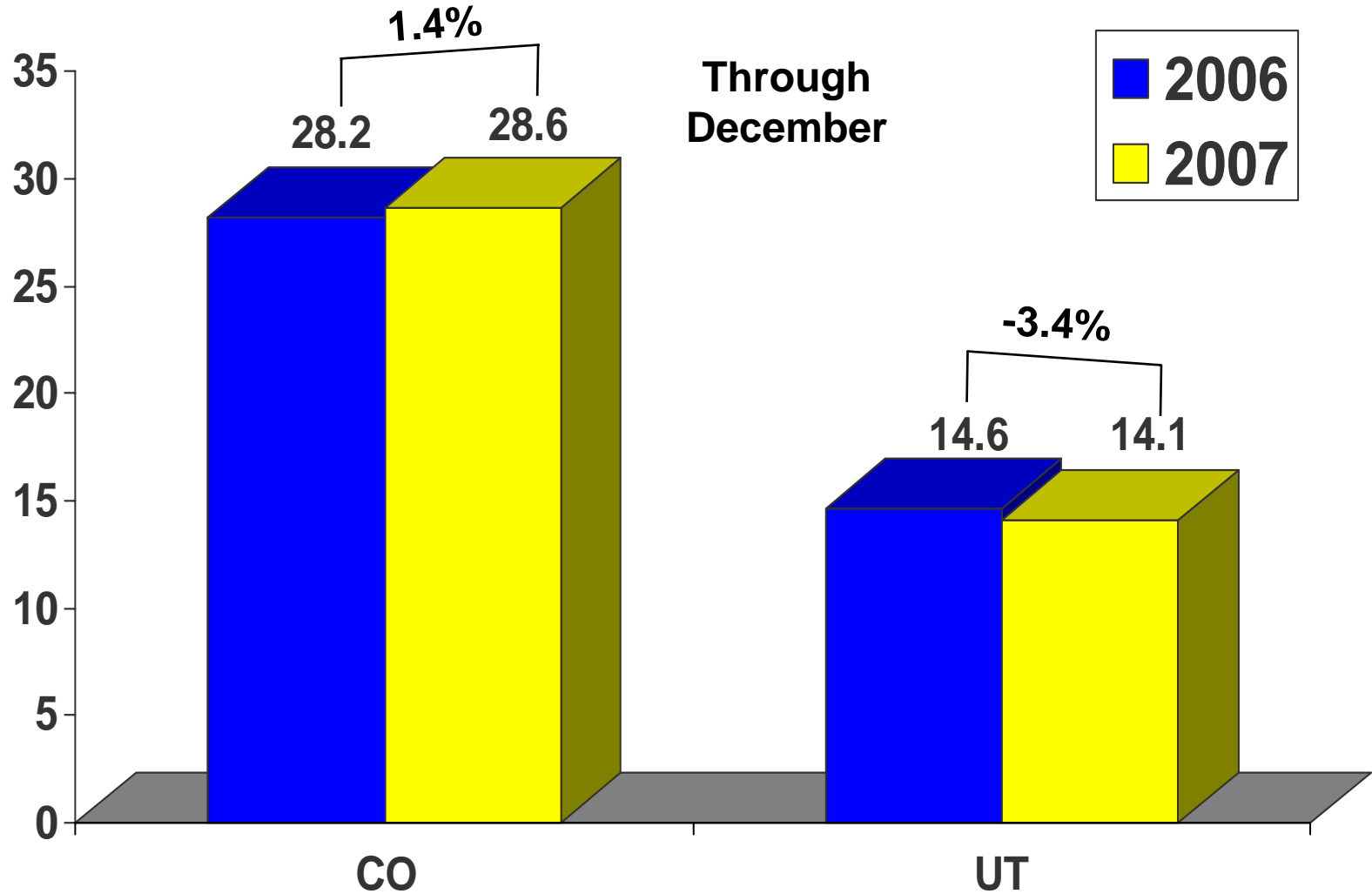


Colorado / Utah



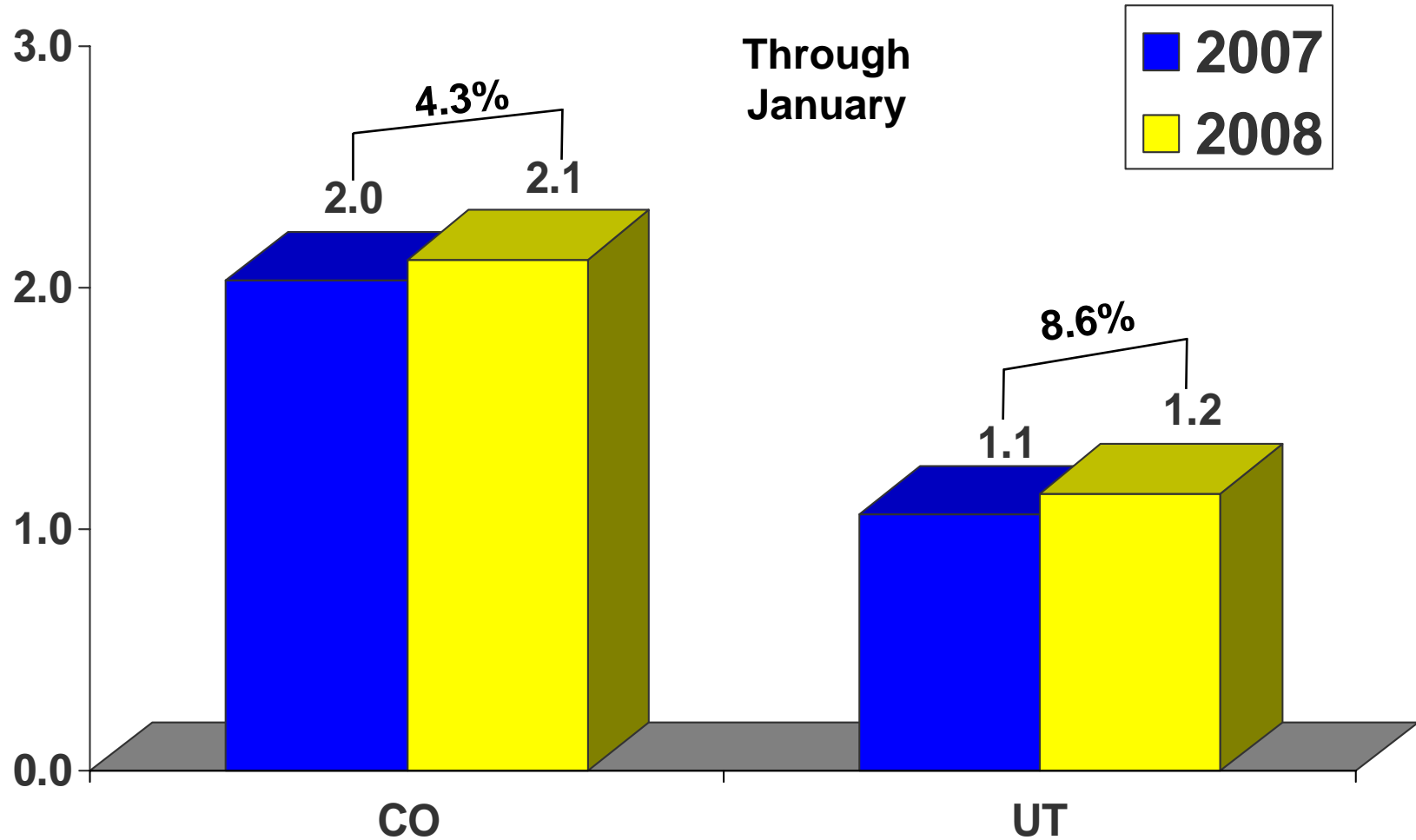
CO/UT Year-to-Date Growth

Tons in Millions



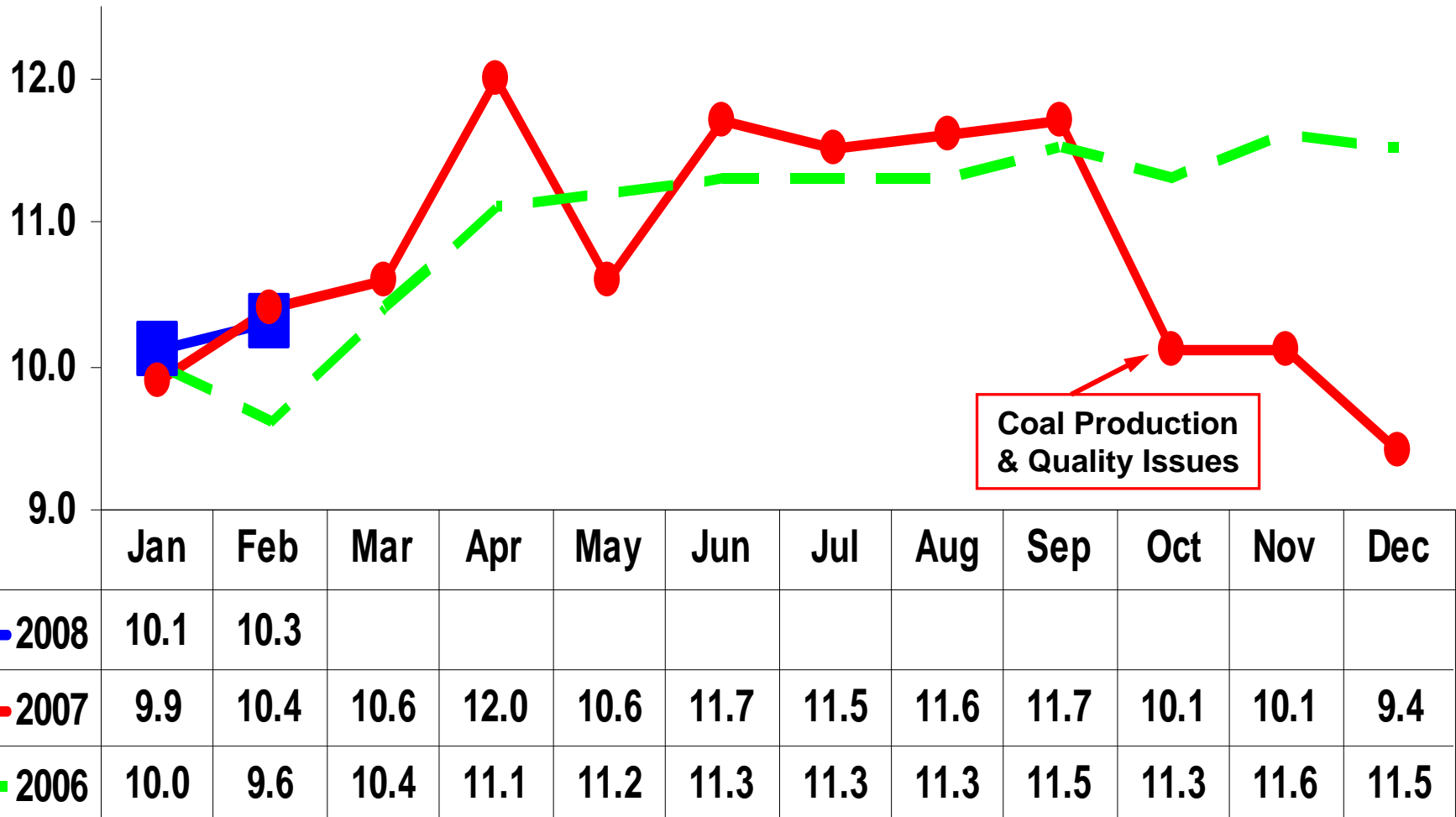
CO/UT Year-to-Date Growth

Tons in Millions

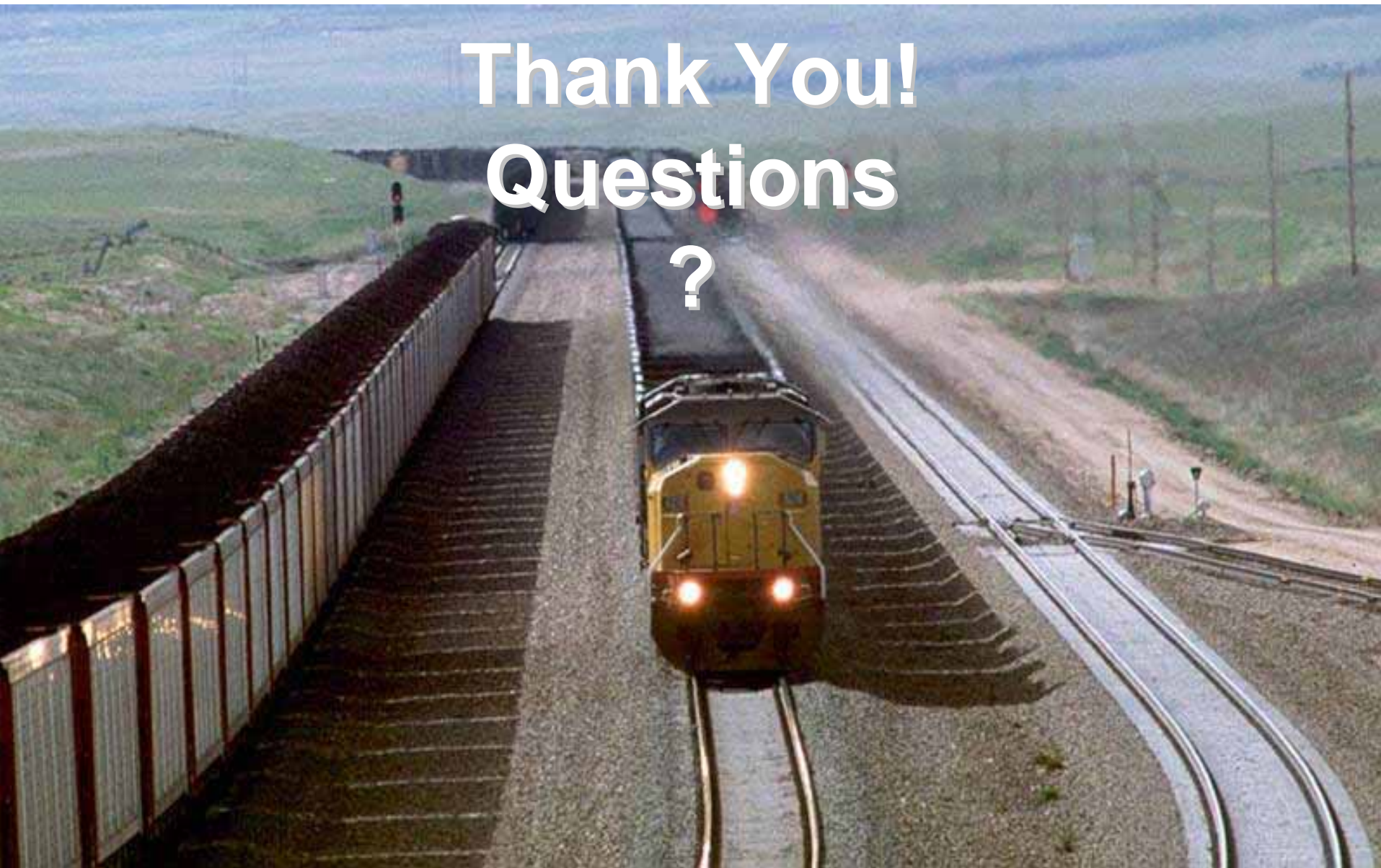


UPRR Coal Operations – Colorado/Utah

Average Daily Loadings 2006 - 2008



Thank You! Questions ?

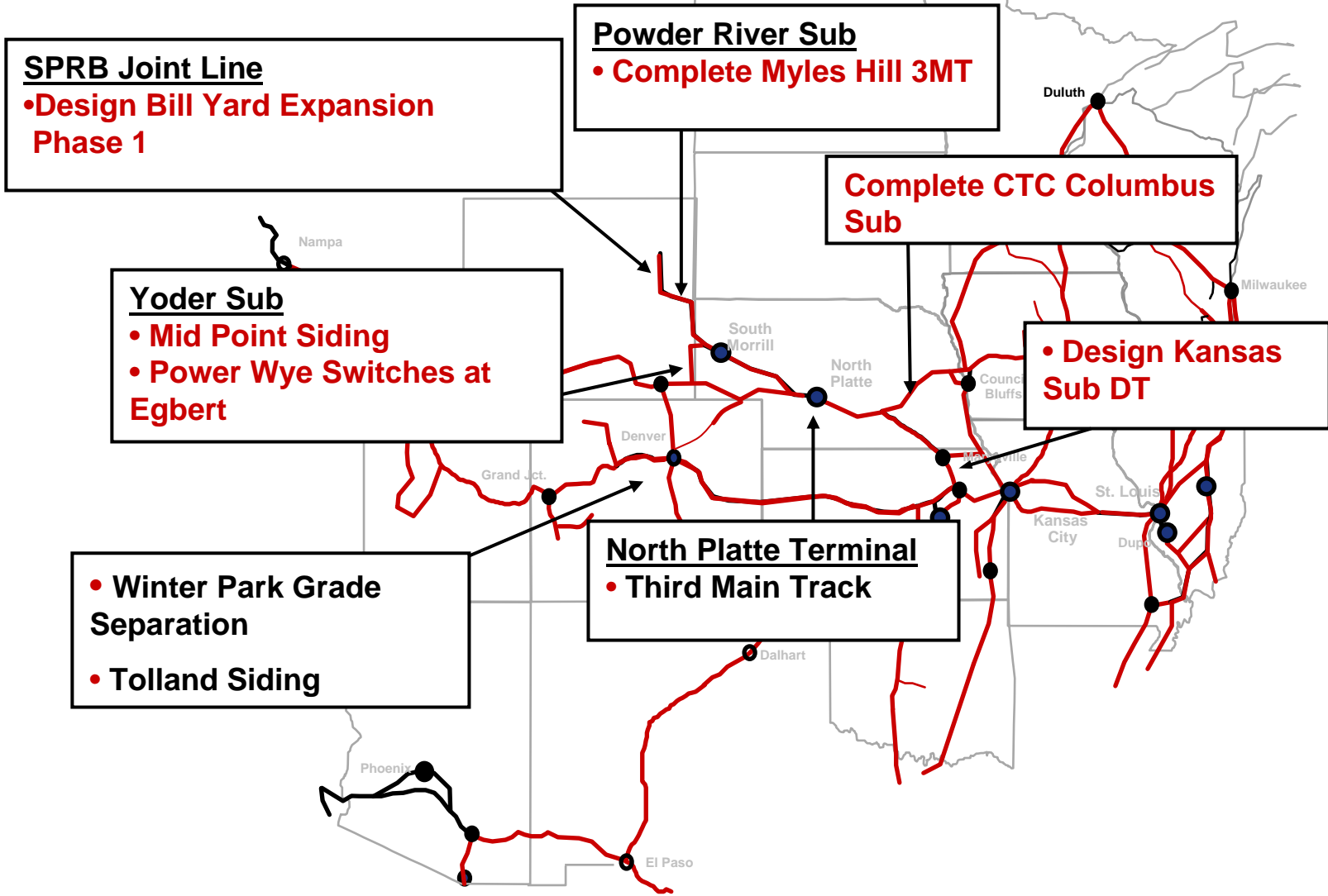


2008 Capacity & Maintenance Schedules



Coal Corridor Investments

2007 Actual and 2008 Planned Projects

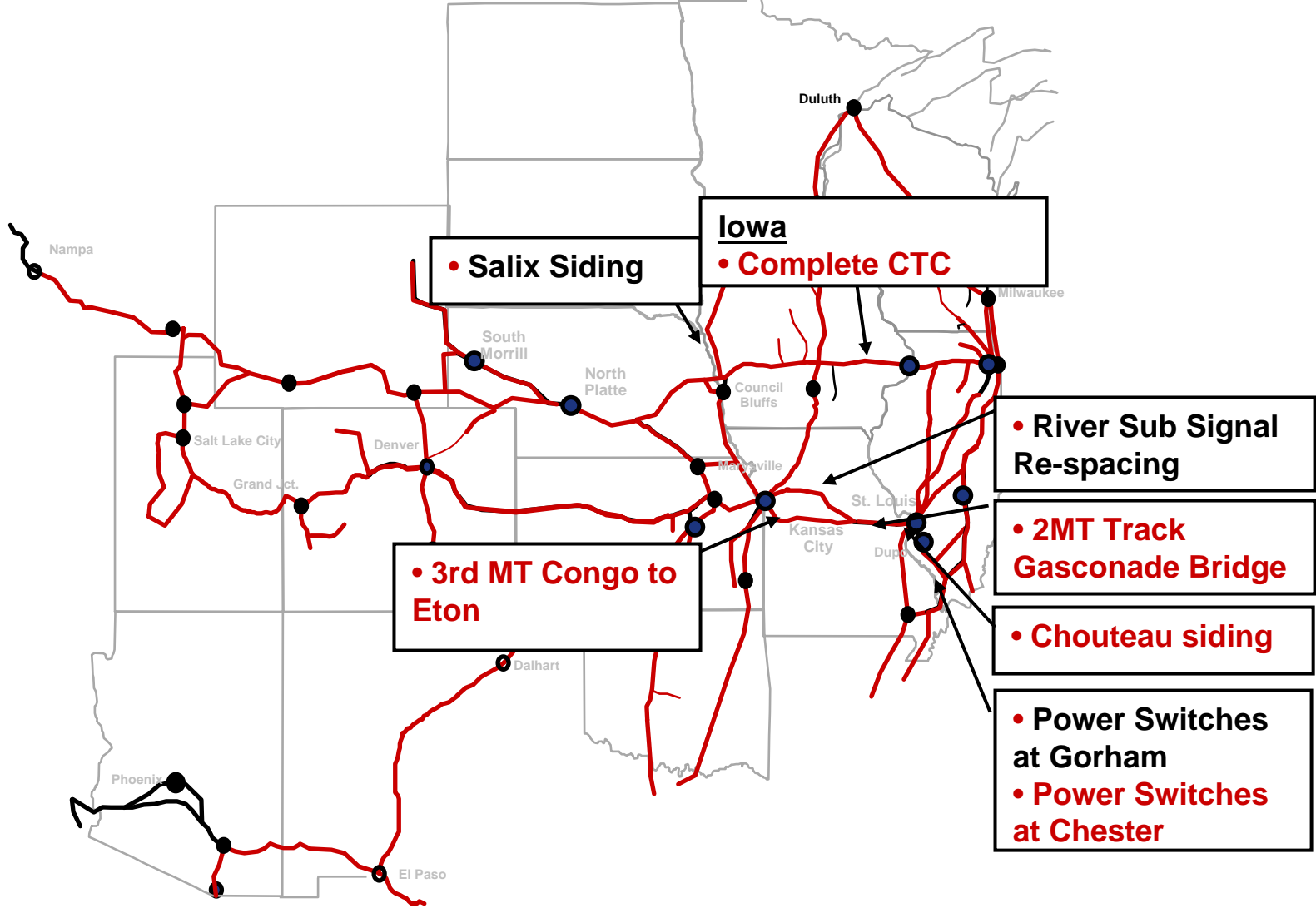


gec1

Updated from Tom Haley's CANAC Joint Line Report for the North End and Logan Hill mileages
Glenn Edward Carlson, 3/29/2007

Coal Corridor Investments (Page 2)

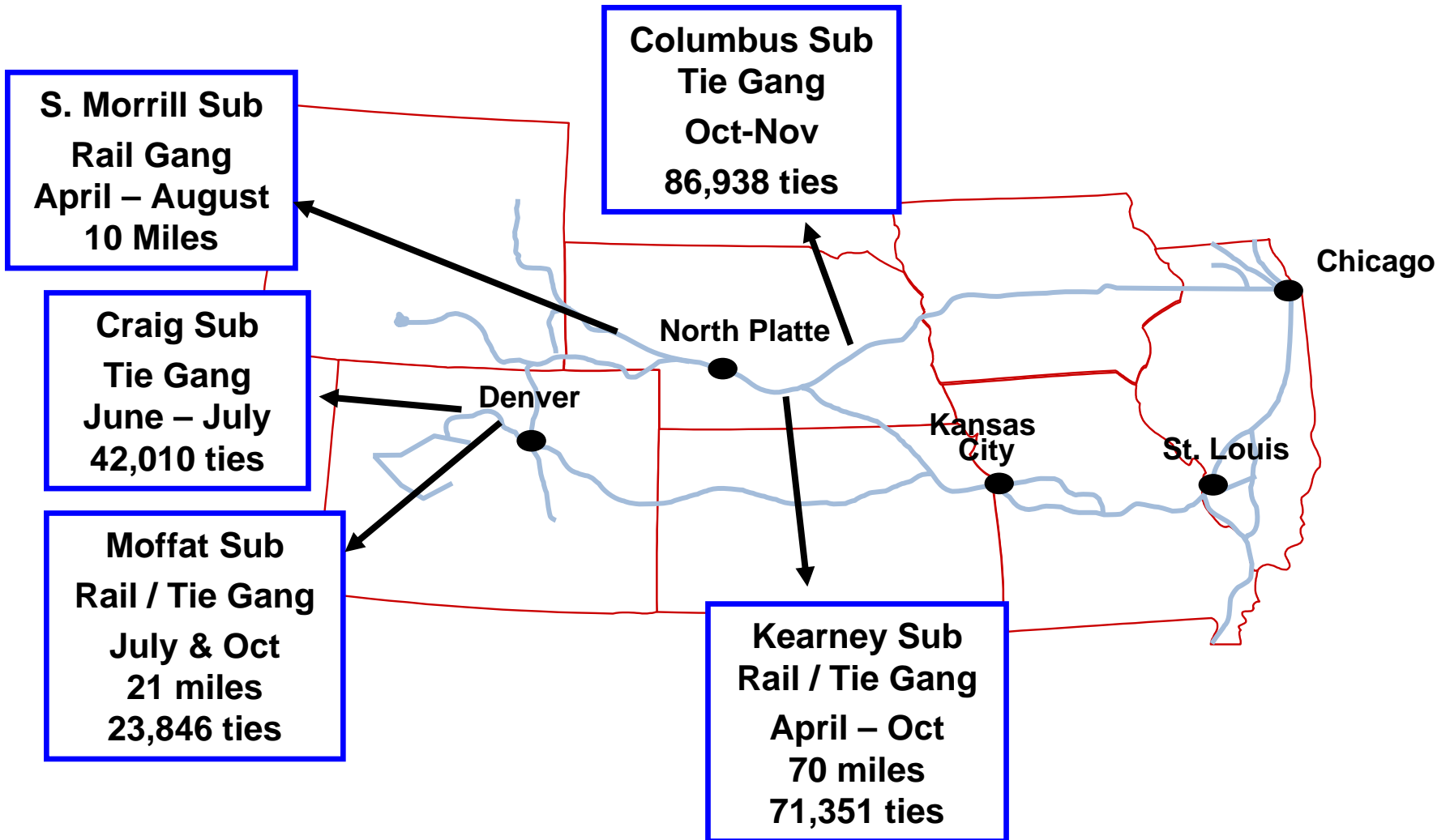
2007 Actual and 2008 Planned Projects



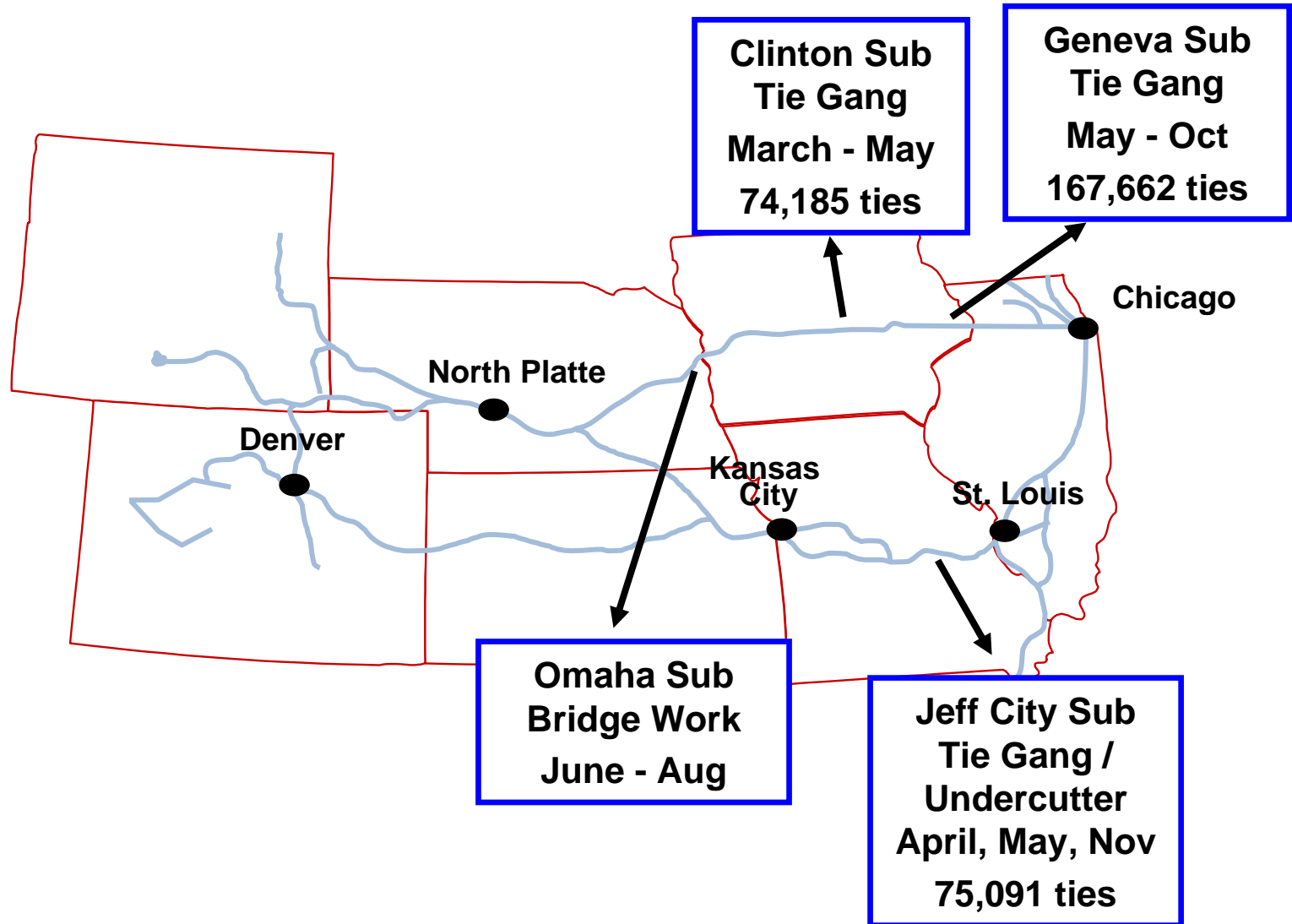
gec2

Updated from Tom Haley's CANAC Joint Line Report for the North End and Logan Hill mileages
Glenn Edward Carlson, 3/29/2007

Maintenance Projects - 2007



Maintenance Projects – 2007 (Page 2)



Thank You! Questions ?

