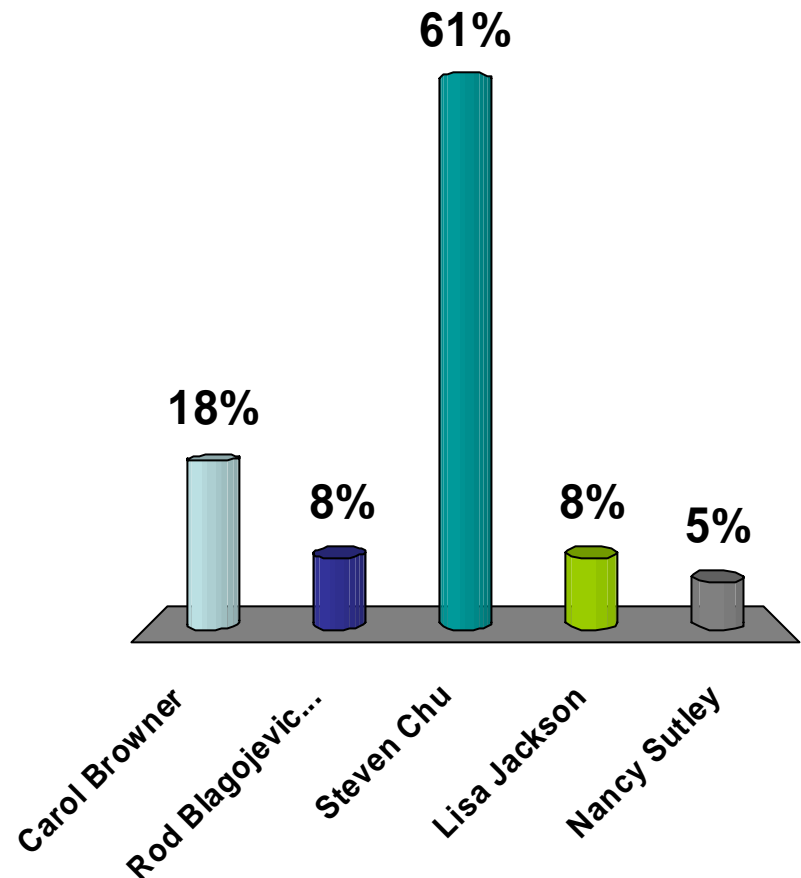


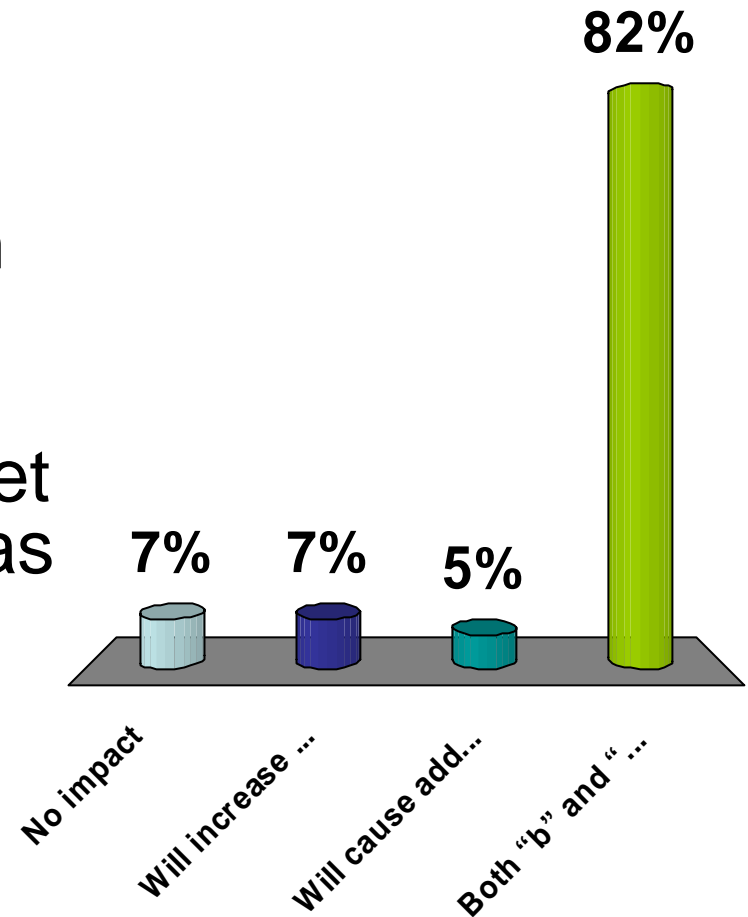
1. What is the name of the Obama administration's Secretary of Energy?

1. Carol Browner
2. Rod Blagojevich
3. Steven Chu
4. Lisa Jackson
5. Nancy Sutley



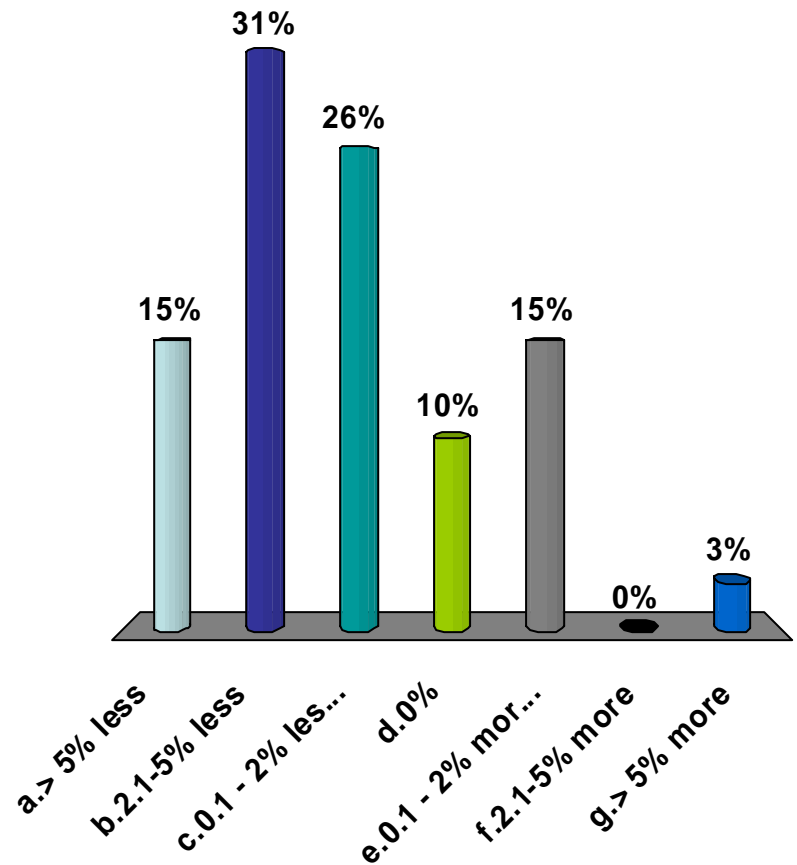
2. How do you think the new Energy Secretary's policies will impact U.S. fossil fuel based generation over the next four years?

- a. No impact
- b. Will increase fossil unit generation costs by levying additional carbon reduction requirements
- c. Will cause additional electricity needs to be met by wind, solar, land fill gas and other "green" technologies
- d. Both "b" and "c"



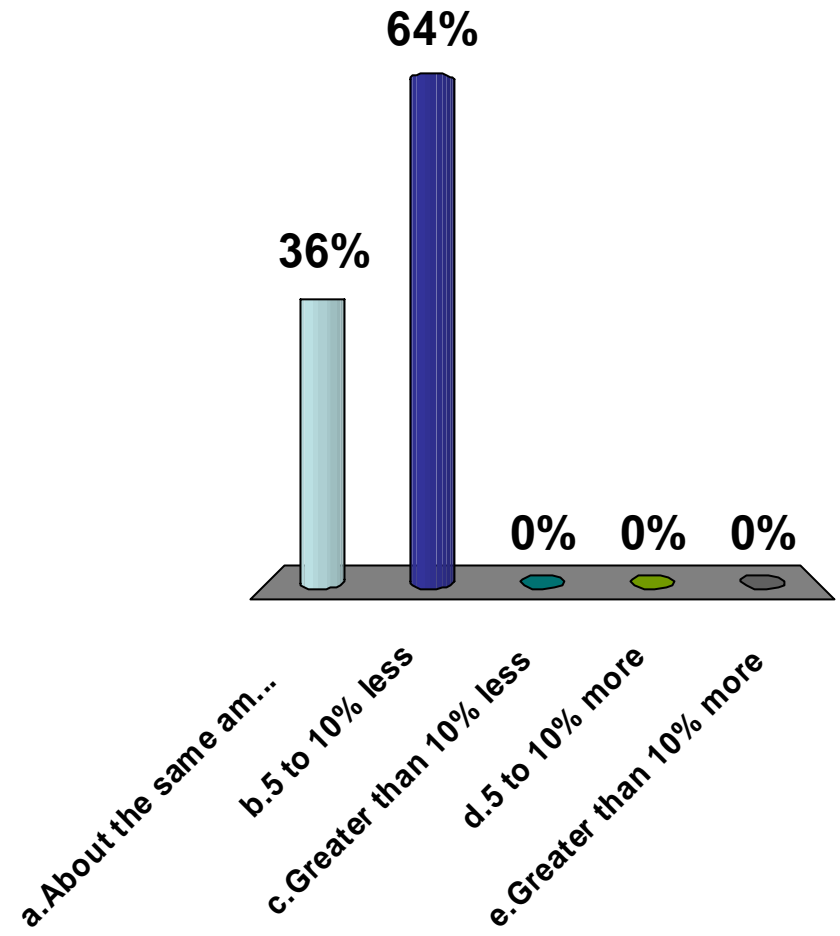
3. Compared to 2008 we expect our consumption/production in 2009 to be:

- a. > 5% less
- b. 2.1-5% less
- c. 0.1 - 2% less
- d. 0%
- e. 0.1 - 2% more
- f. 2.1-5% more
- g. > 5% more



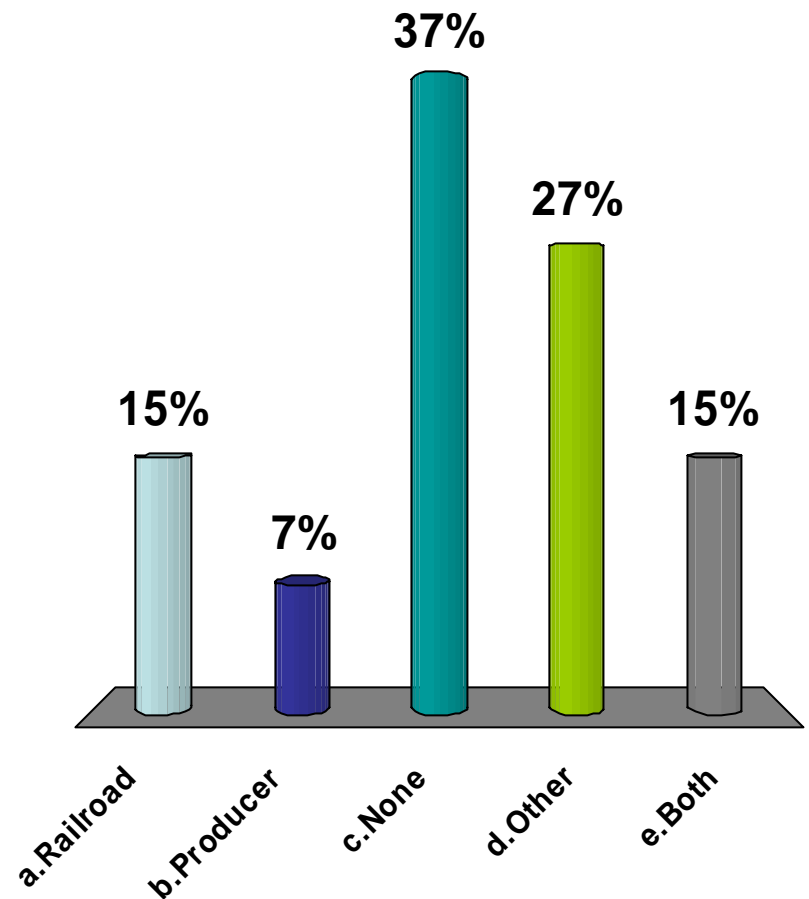
4. What amount of coal will be shipped from the PRB in 2009 versus 2008?

- a. About the same amount
- b. 5 to 10% less
- c. Greater than 10% less
- d. 5 to 10% more
- e. Greater than 10% more



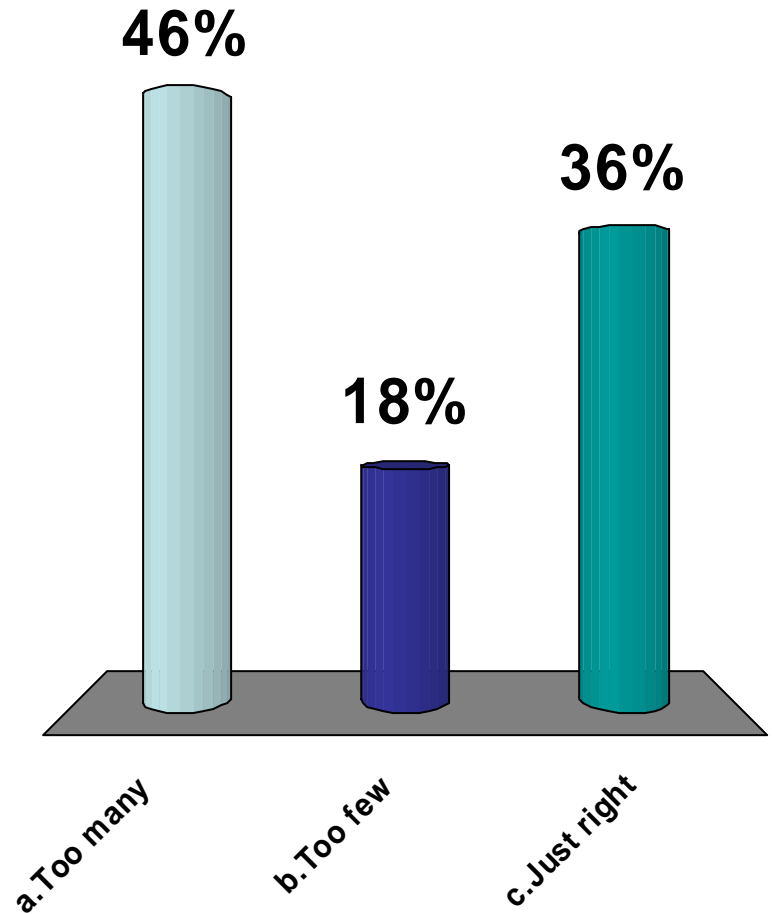
5. What do you see as the main constraint on the Joint Line in 2009:

- a. Railroad
- b. Producer
- c. None
- d. Other
- e. Both



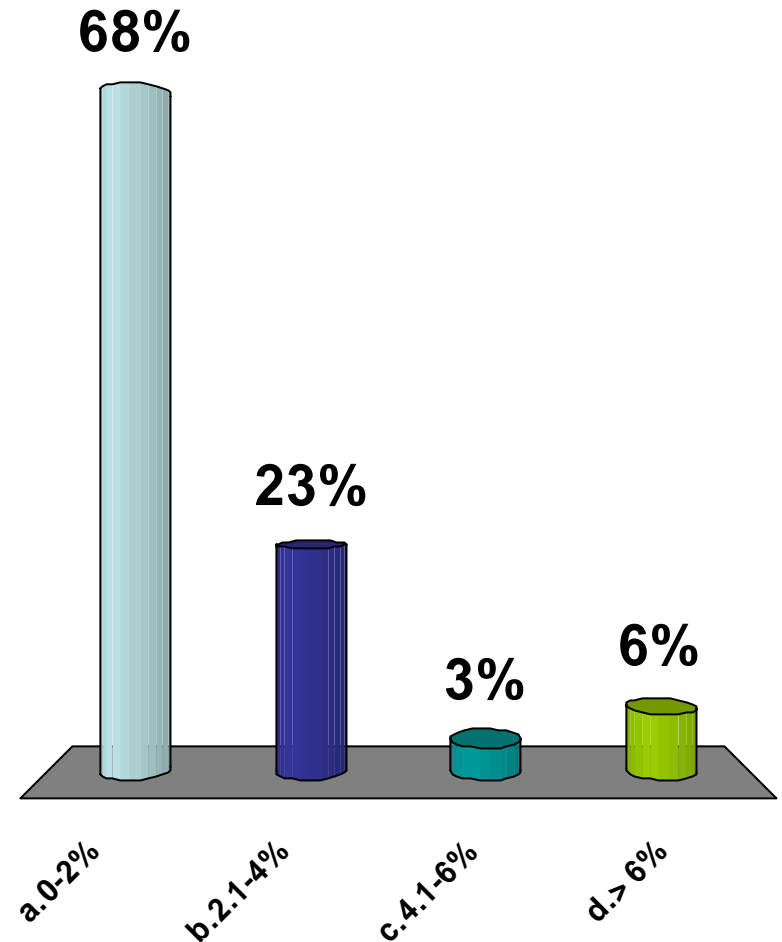
6. The number of train sets running in the SPRB is:

- a. Too many
- b. Too few
- c. Just right



7. What do you see as the percentage growth for the mines north of Reno Jct.:

- a. 0-2%
- b. 2.1-4%
- c. 4.1-6%
- d. > 6%

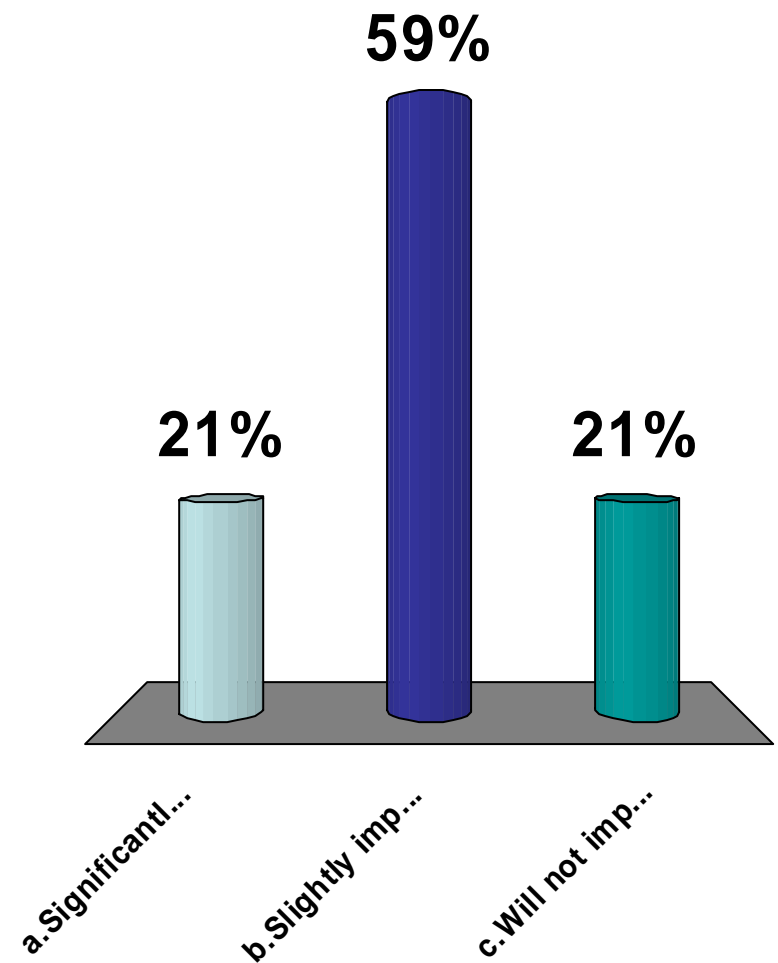


8. In 2009 and beyond scrubber installations will:

a. Significantly impact coal source switching

b. Slightly impact coal source switching

c. Will not impact coal sourcing



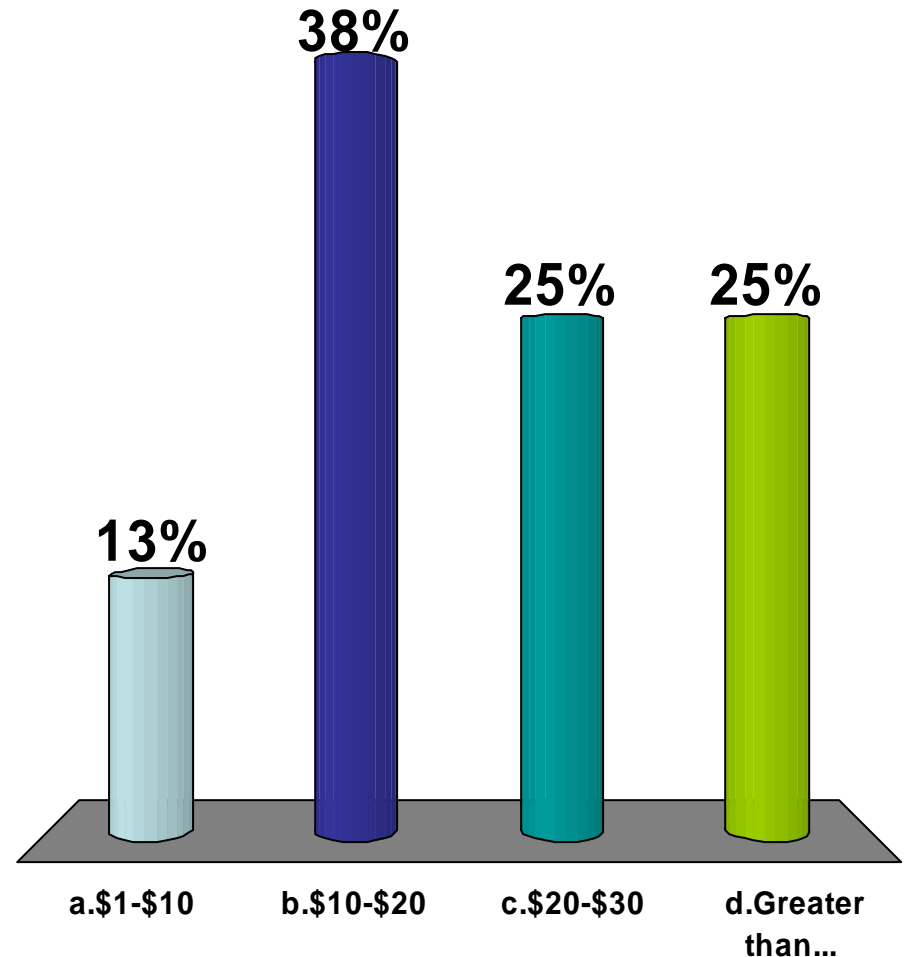
9. At what CO2 price will your business model change substantially?

a. \$1-\$10

b. \$10-\$20

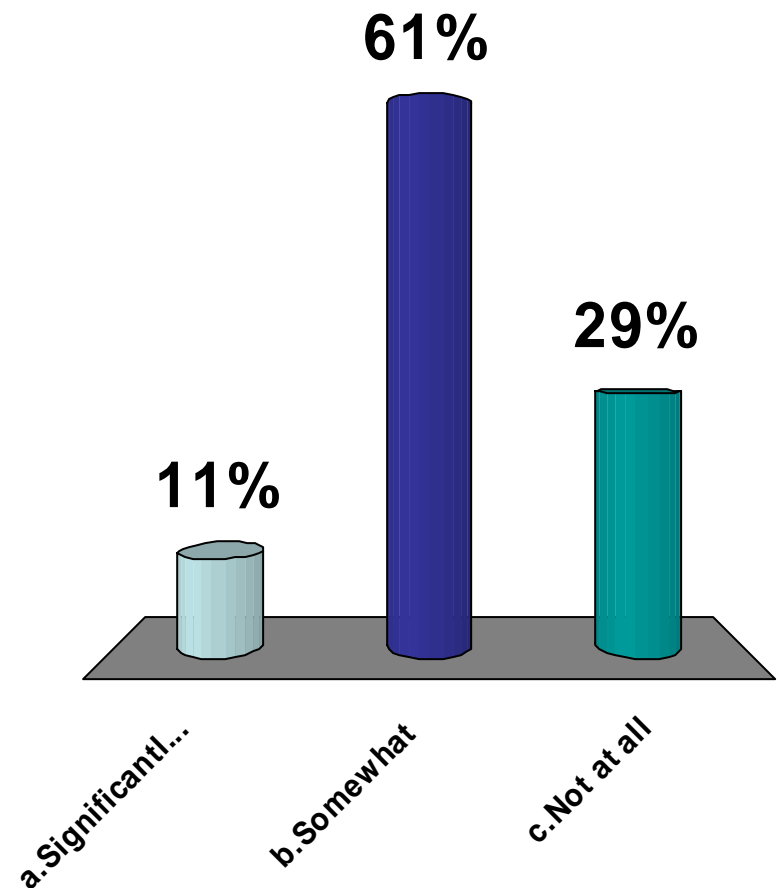
c. \$20-\$30

d. Greater than \$30



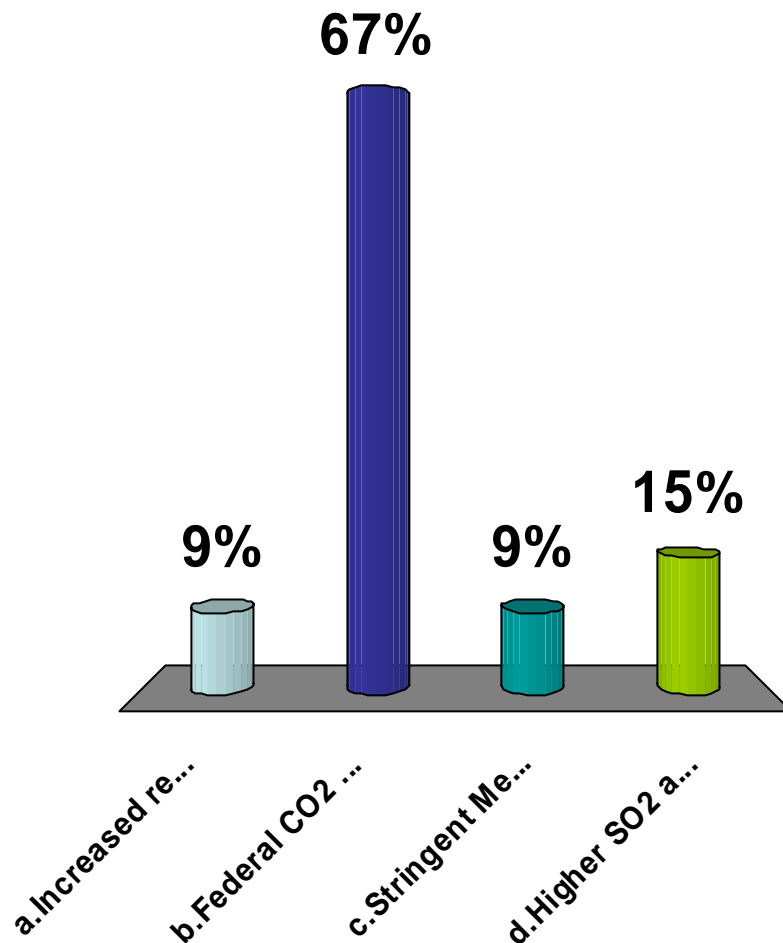
10. Will the Clean Air Interstate Rule (CAIR) cause changes in fuel sources?

- a. Significantly
- b. Somewhat
- c. Not at all



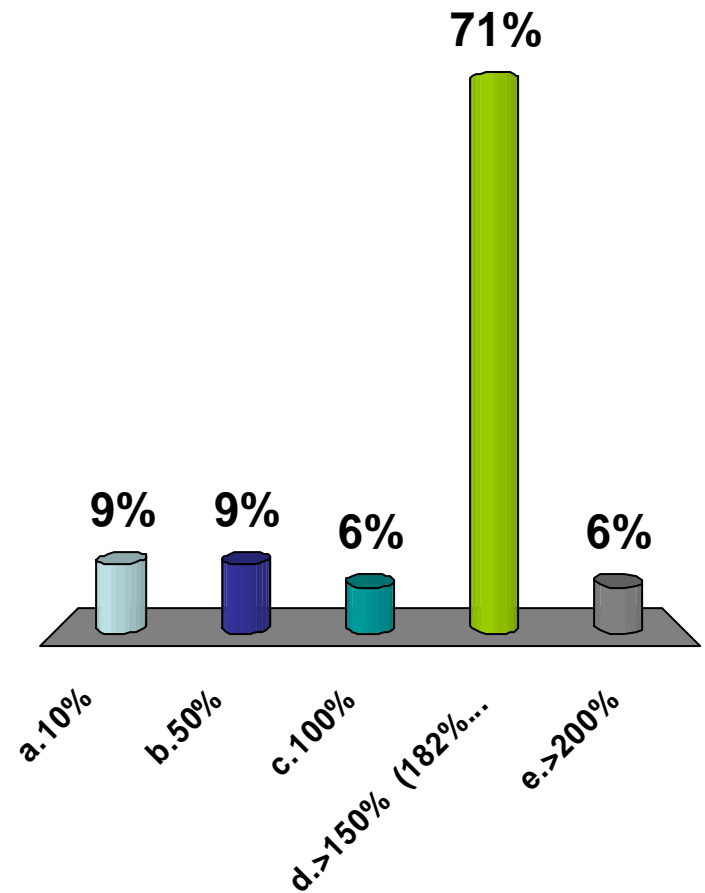
11. What is your primary future environmental concern?

- a. Increased renewable generation
- b. Federal CO2 Regulation
- c. Stringent Mercury Regulation
- d. Higher SO2 and NOx allowance prices



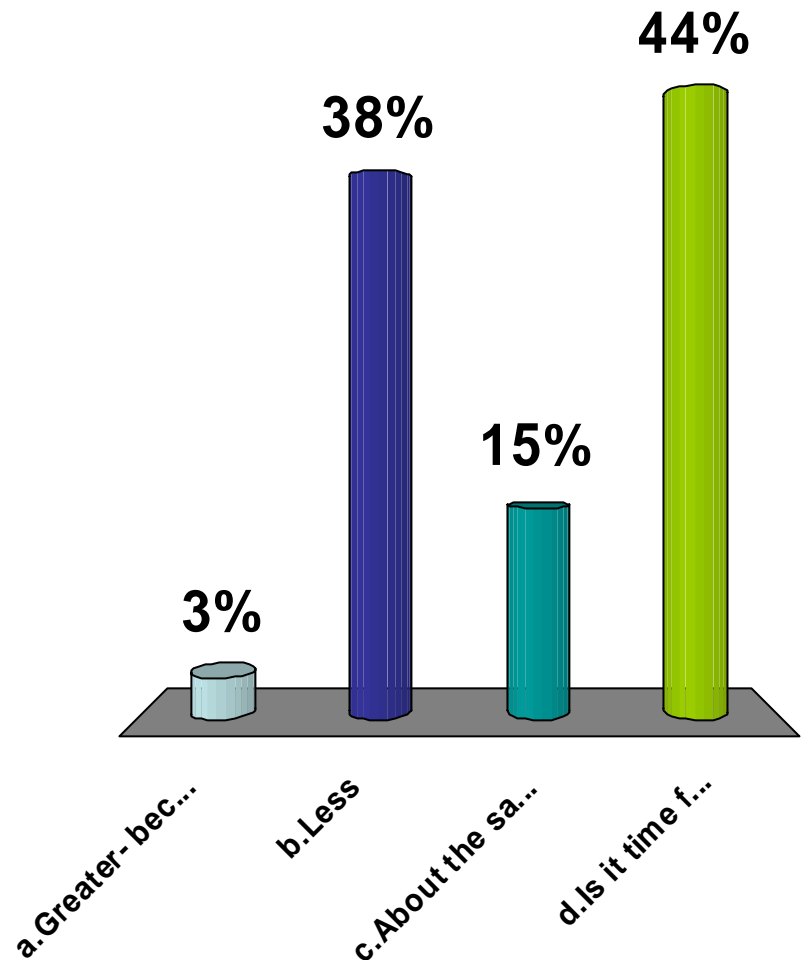
12. Electricity from coal has grown how much since 1970?

- a. 10%
- b. 50%
- c. 100%
- d. >150% (182%)
- e. >200%



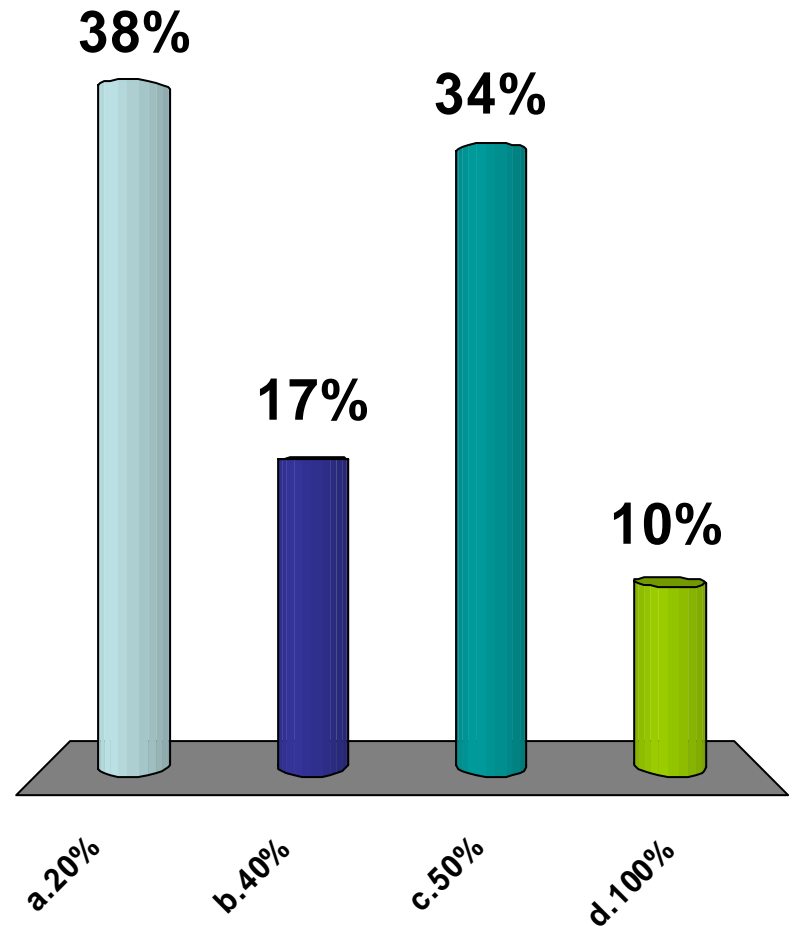
13. Since 1970 emissions from coal are:

- a. Greater- because my eyes are always watering, and I have a constant sore throat, and the sun never shines
- b. Less
- c. About the same
- d. Is it time for lunch yet???



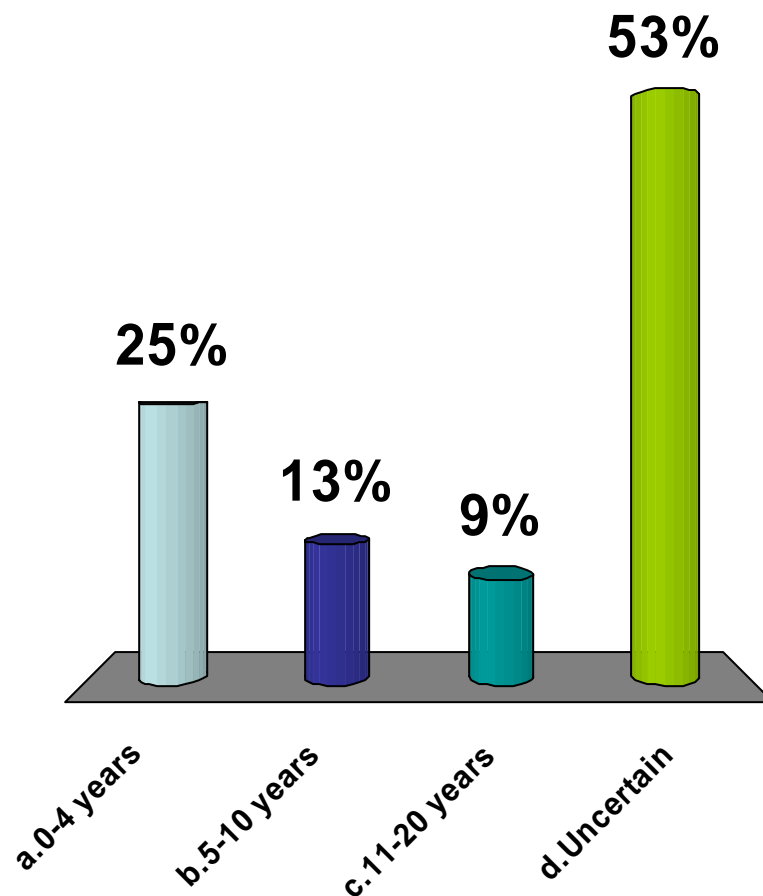
14. What is the emissions growth or reduction amount since 1970?

- a. 20%
- b. 40%
- c. 50%
- d. 100%



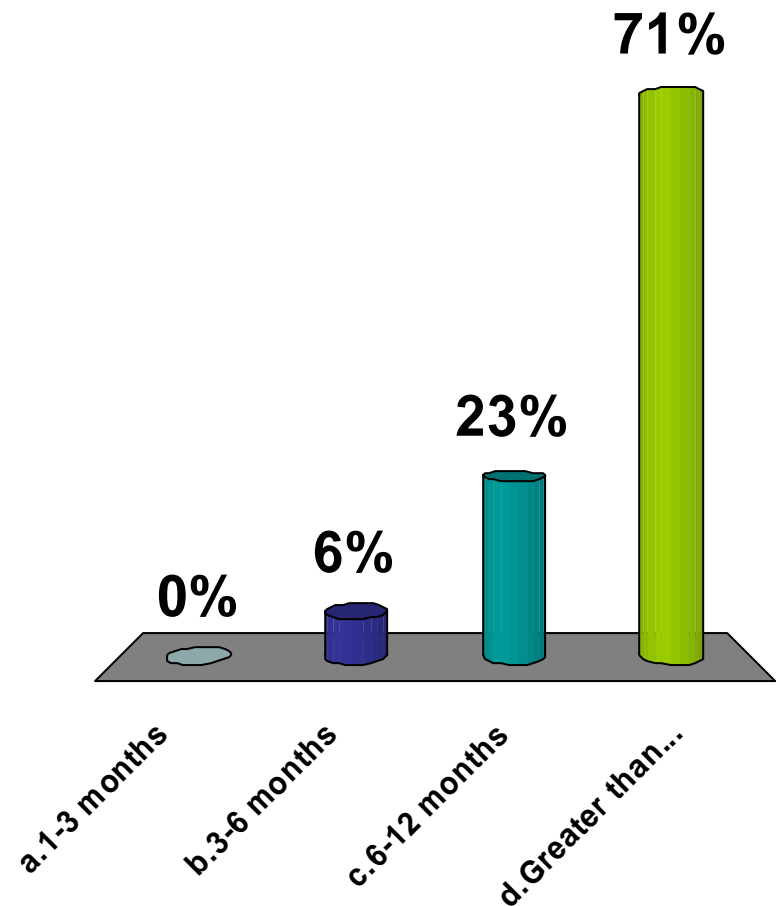
15. When will new coal reserves in Montana come on line:

- a. 0-4 years
- b. 5-10 years
- c. 11-20 years
- d. Uncertain



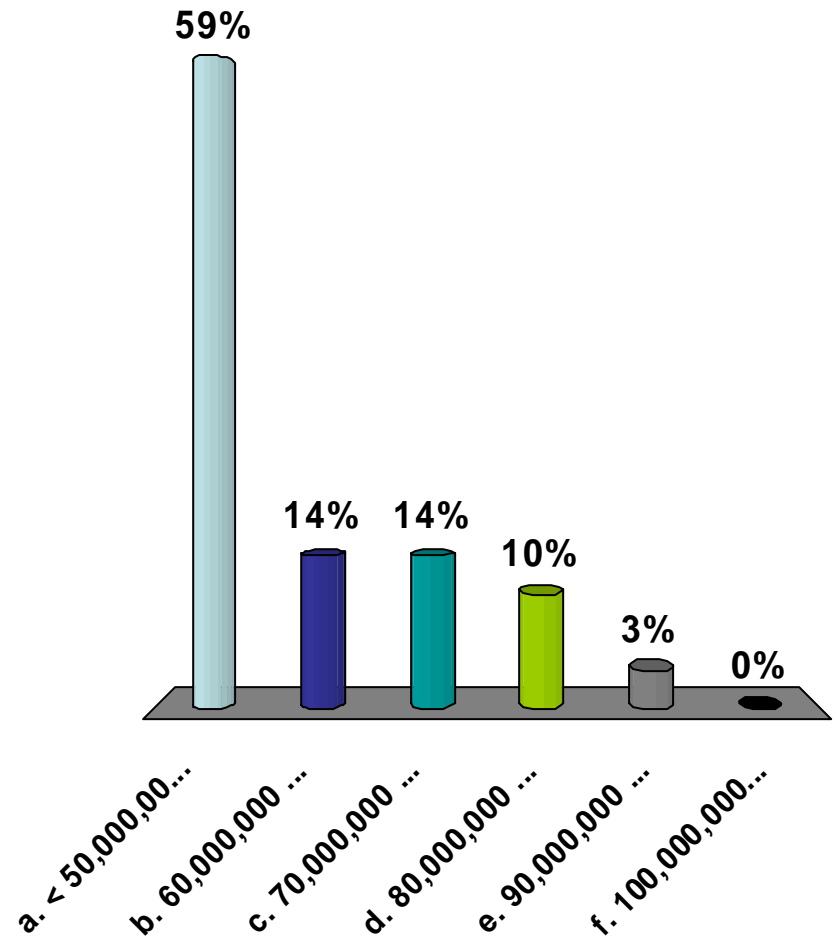
16. How long do you believe it will take for the recovery in global demand for coal?

- a. 1-3 months
- b. 3-6 months
- c. 6-12 months
- d. Greater than a year



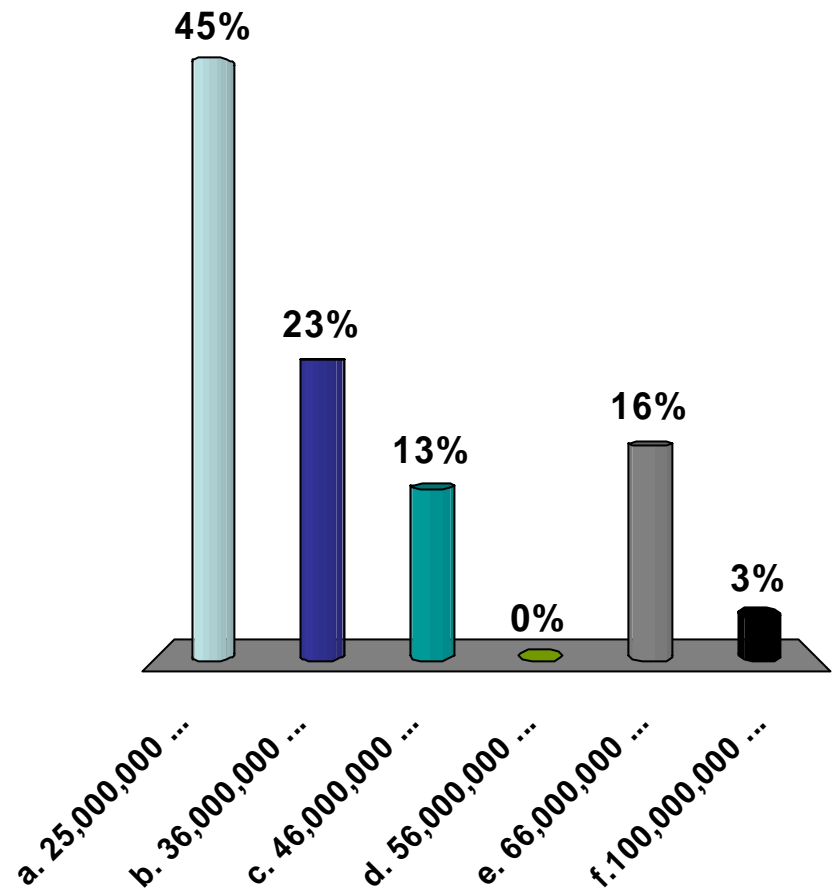
17. Approximately how much coal will be exported from the US in 2009:

- a. < 50,000,000 tons
- b. 60,000,000 tons
- c. 70,000,000 tons
- d. 80,000,000 tons
- e. 90,000,000 tons
- f. 100,000,000 + tons



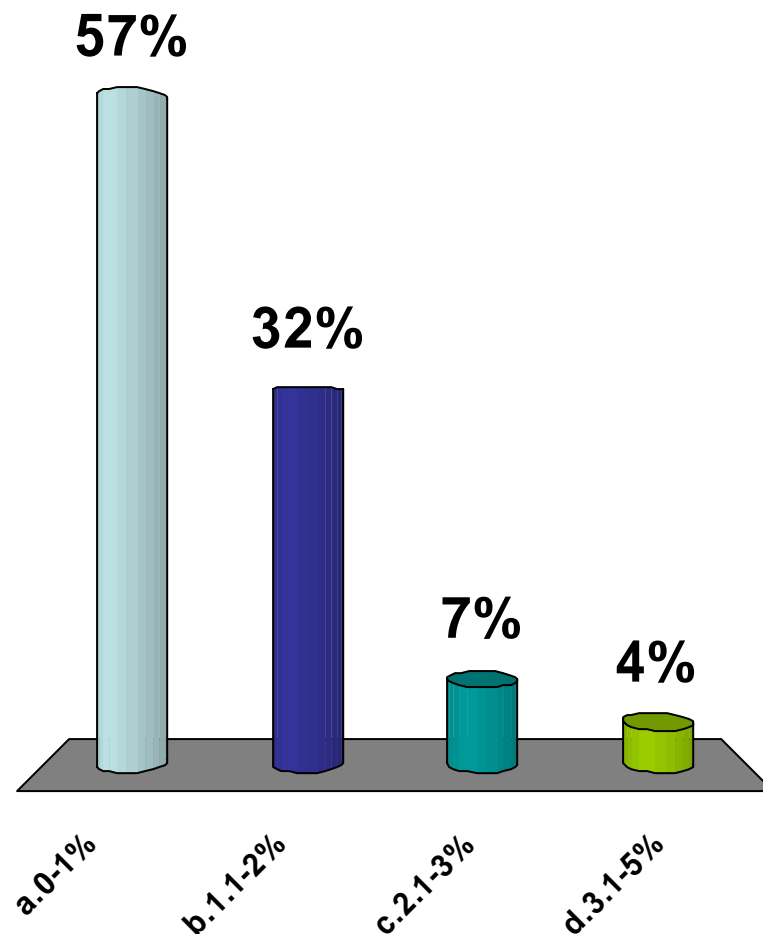
18. Approximately how much coal was imported to the US 2008:

- a. 25,000,000 tons
- b. 36,000,000 tons
- c. 46,000,000 tons
- d. 56,000,000 tons
- e. 66,000,000 tons
- f. 100,000,000 + tons



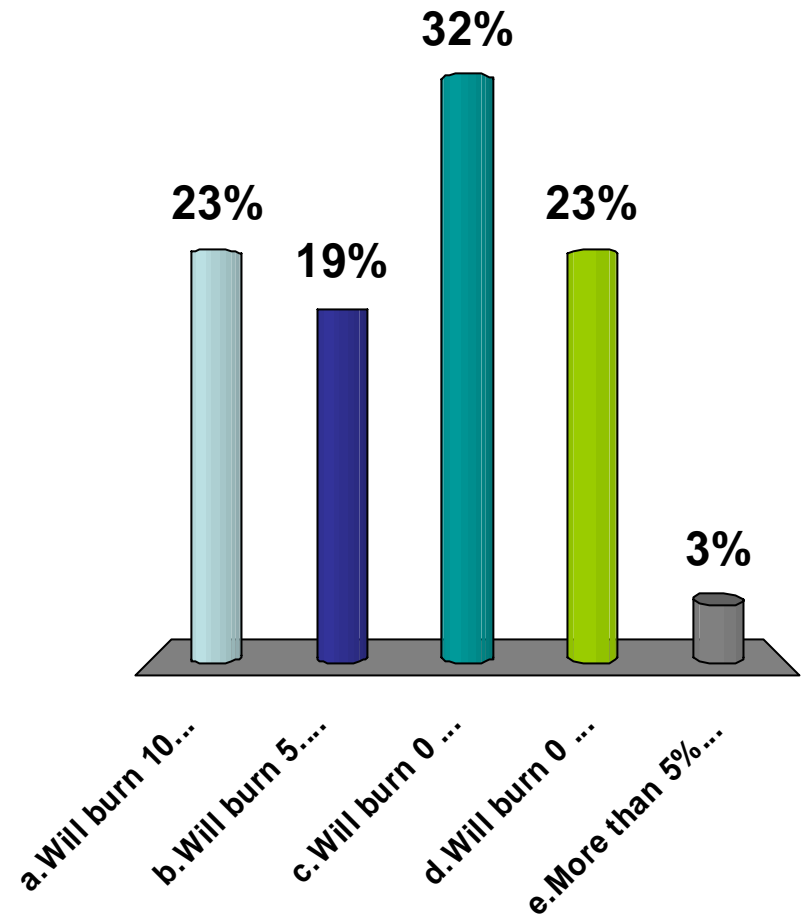
19. By what % will 2009 export/import coal market activity impact western coal:

- a. 0-1%
- b. 1.1-2%
- c. 2.1-3%
- d. 3.1-5%



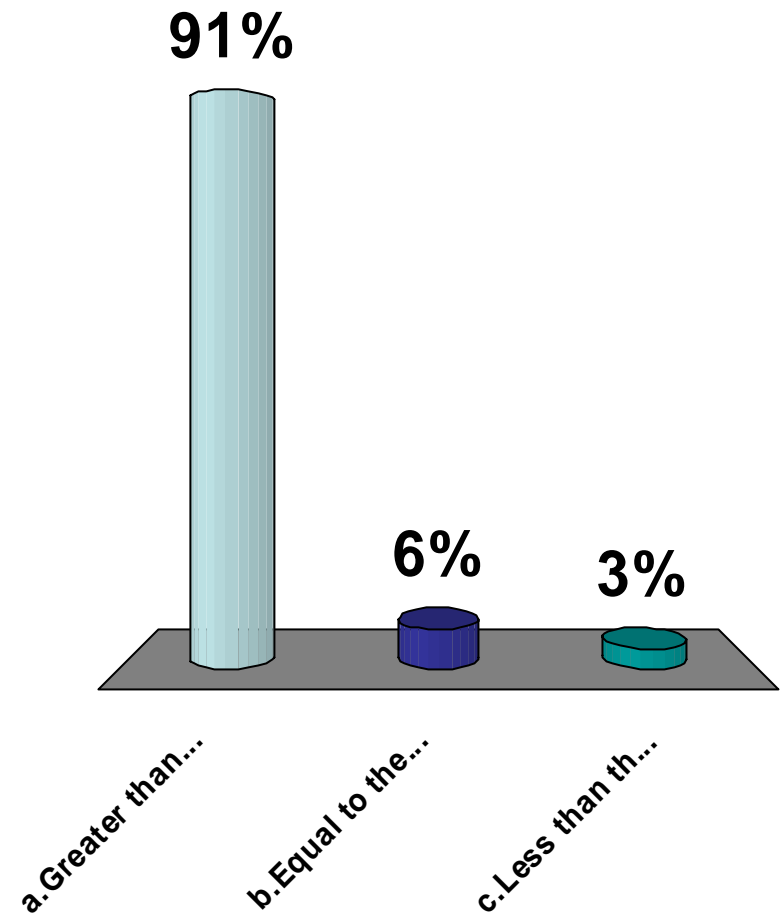
20. In 2009 power companies east of the Mississippi

- a. Will burn 10% less PRB coal
- b. Will burn 5.1 to 10% less PRB coal
- c. Will burn 0 to 5 % less
- d. Will burn 0 to 5% more
- e. More than 5%



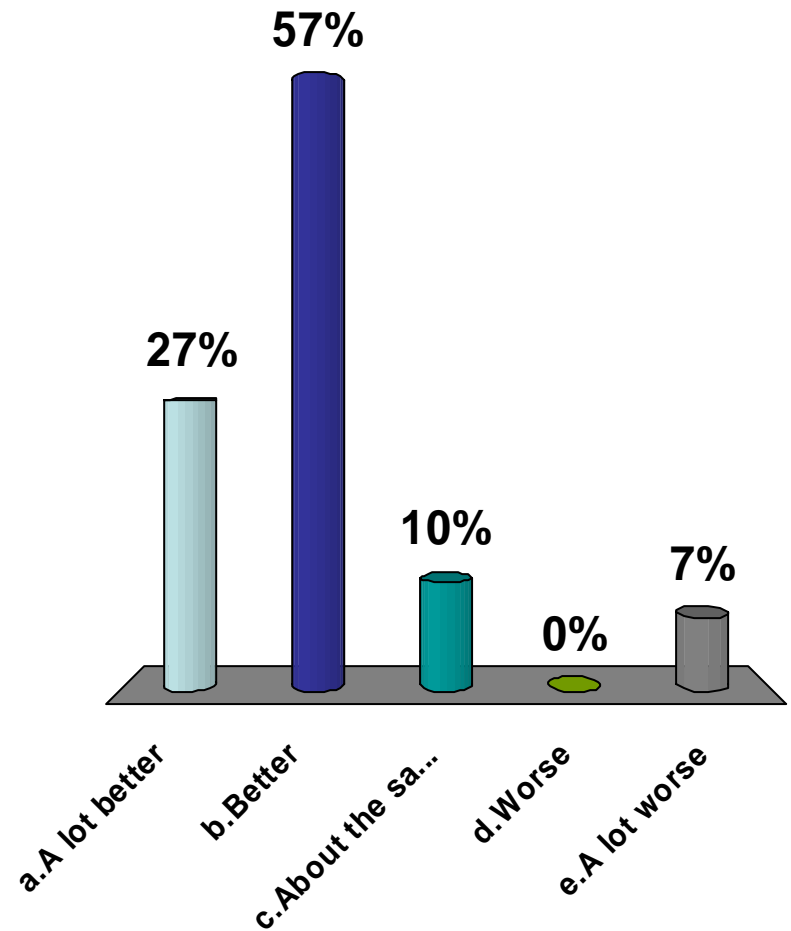
21. Do you think that railroad capacity is:

- a. Greater than demand for coal
- b. Equal to the demand for coal
- c. Less than the demand for coal



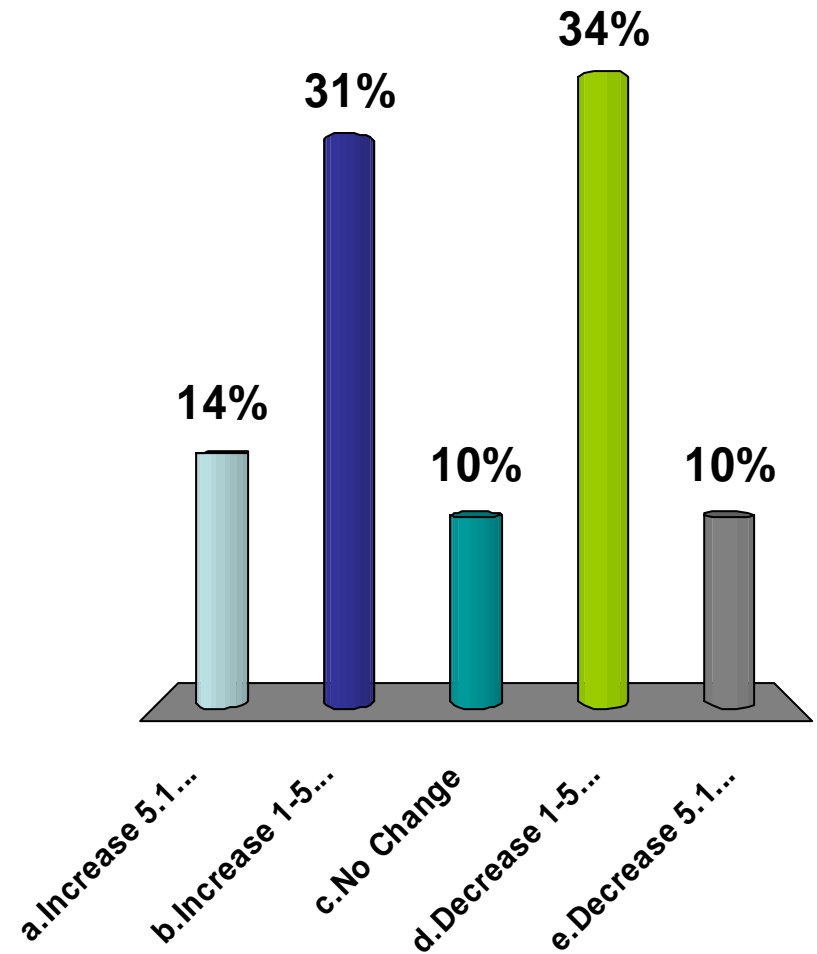
22. In comparison to 2007 railroad service in 2008 was:

- a. A lot better
- b. Better
- c. About the same
- d. Worse
- e. A lot worse



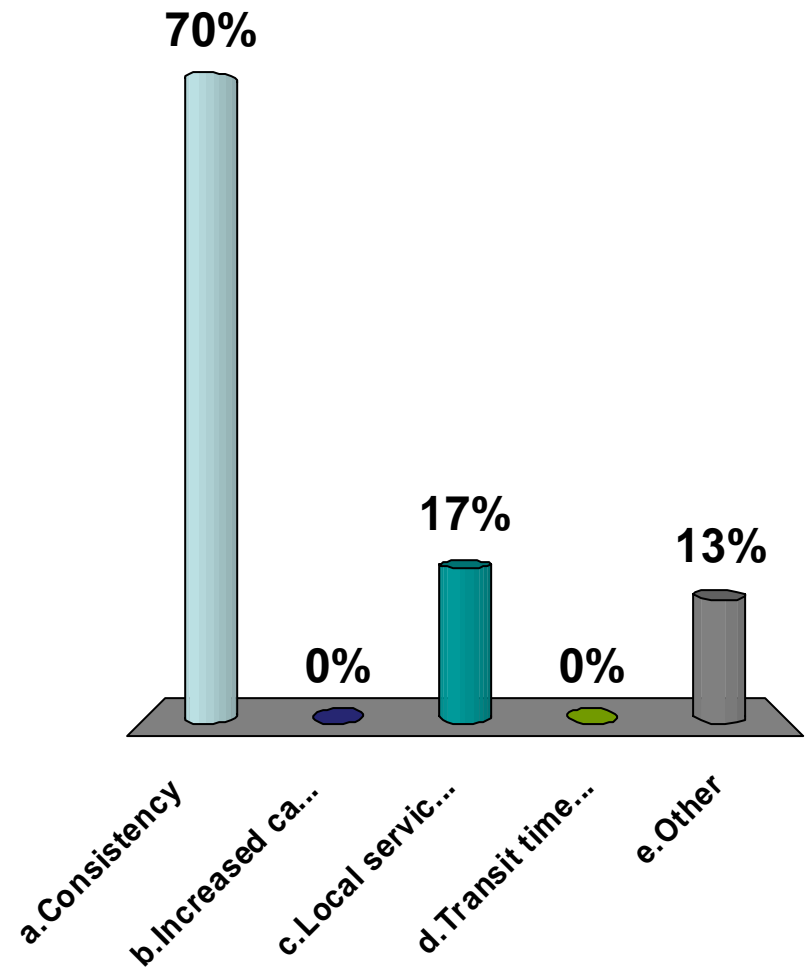
23. Do you believe your cycle times will _____
in 2009:

- a. Increase 5.1-10%
- b. Increase 1-5%
- c. No Change
- d. Decrease 1-5%
- e. Decrease 5.1-10%



24. The single service focused thing that railroads could improve on is:

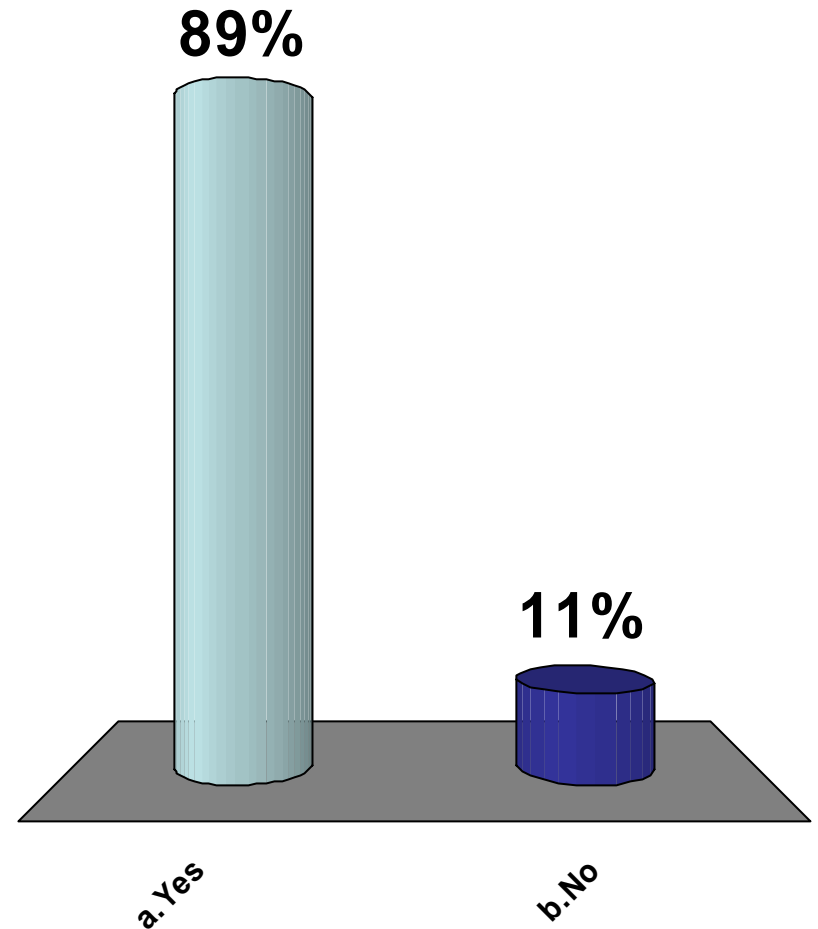
- a. Consistency
- b. Increased capacity
- c. Local service/switching
- d. Transit times
- e. Other



25. Was this an effective way to communicate?

a. Yes

b. No



Is train loading forecast information important?

a. Yes

b. No

